

ILLUSTRATIONS

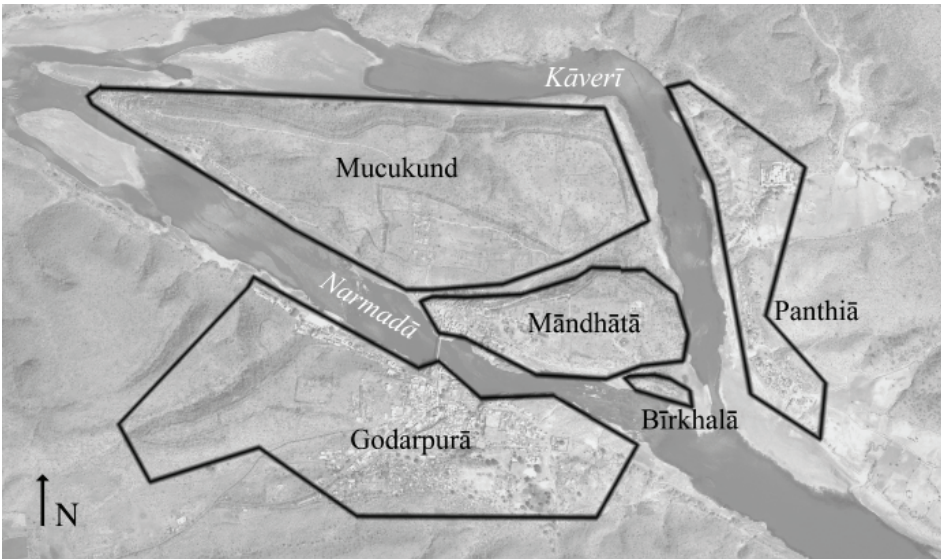
MAPS



Map 1.1: Aerial view of Mādhātā island and its surroundings on March 17, 2001.



Map 1.2: Modern settlements at Omkāreśvar-Māndhātā.



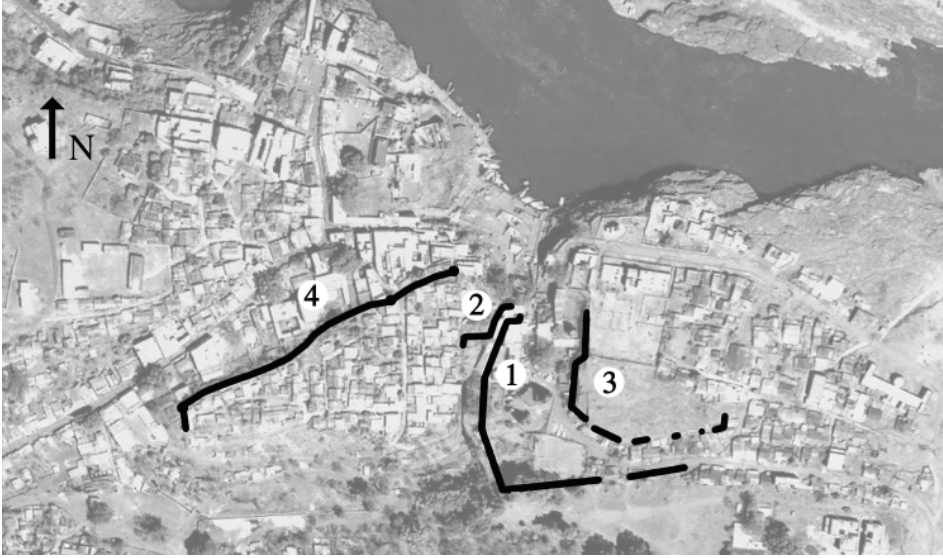
Map 1.3: The five major areas of OM.



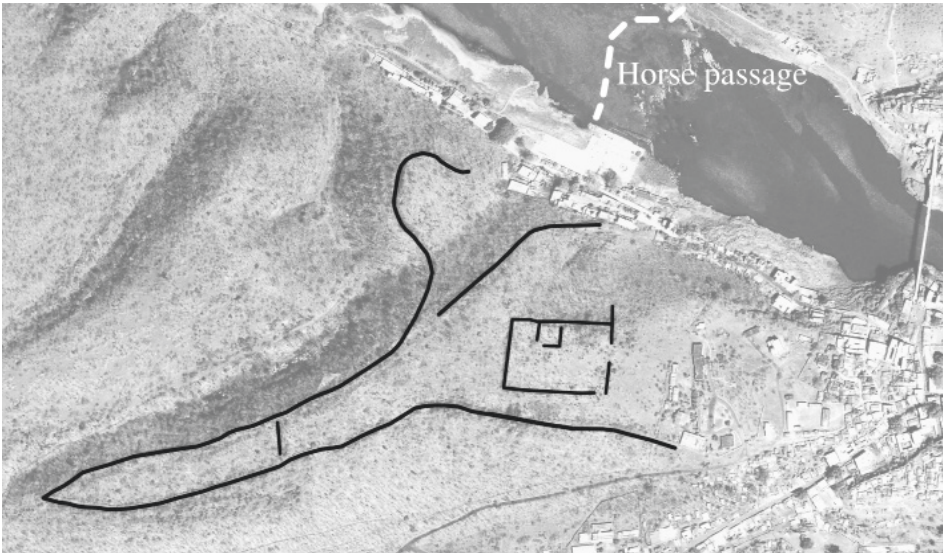
Map 1.4: Extant remains of fortification walls at OM.



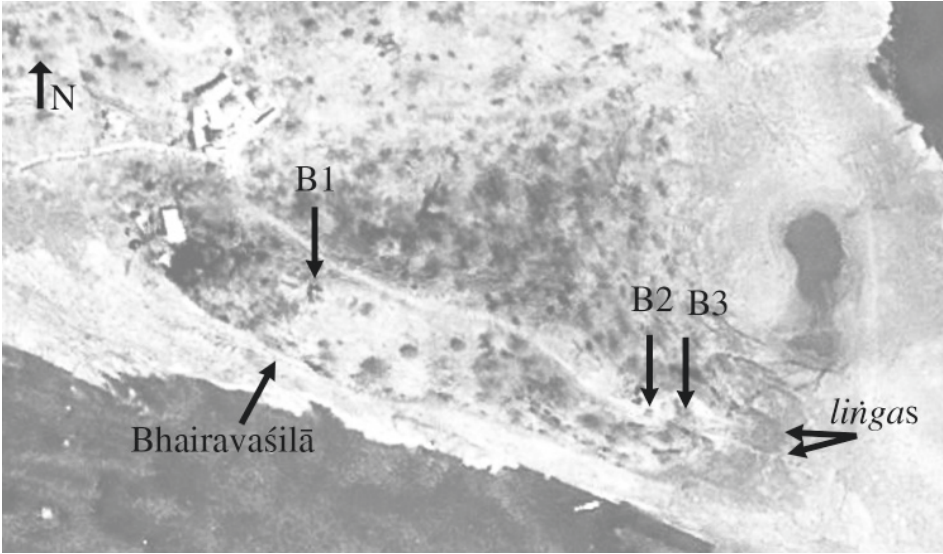
Map 2.1: Godarpurā, aerial view.



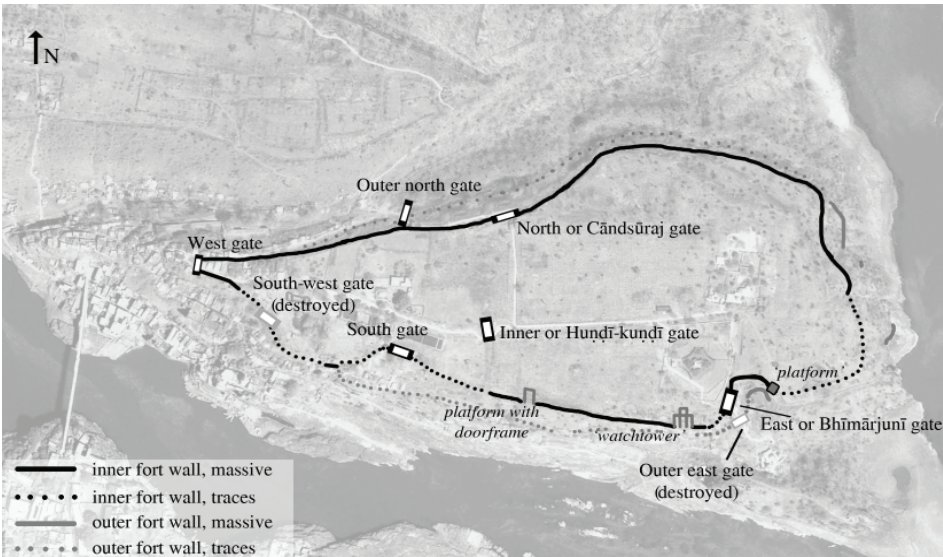
Map 2.2: Godarpurā, location of extant fortification walls.



Map 2.3: Fortification walls and structures to the west of Viṣṇupurī.

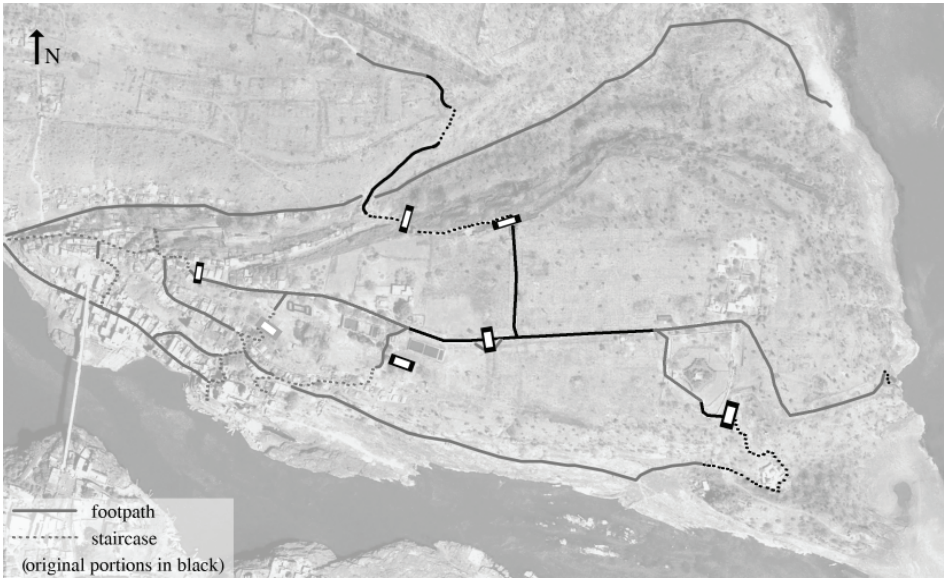


Map 3: Remains on Birkhalā hill.

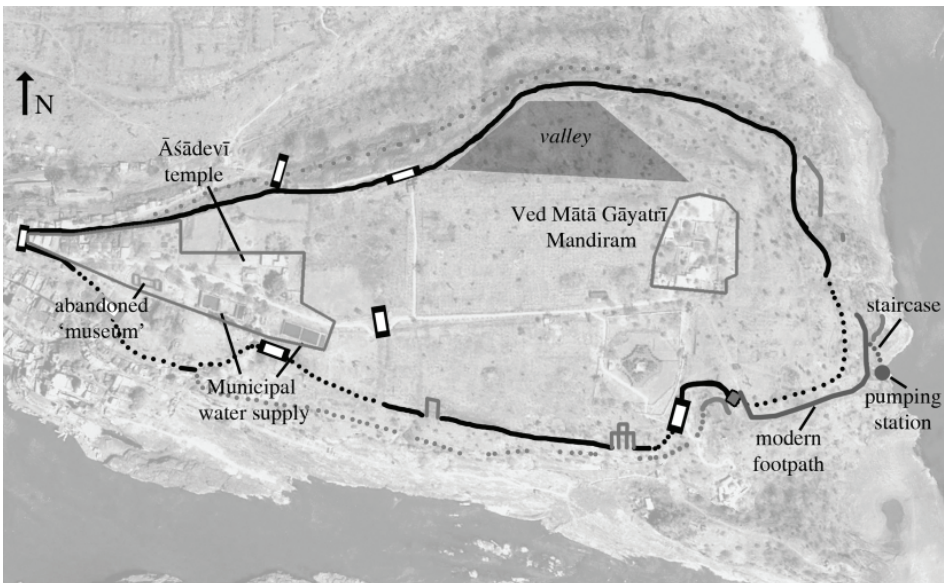


Map 4.1: Māndhātā hill, fortification walls and gateways.

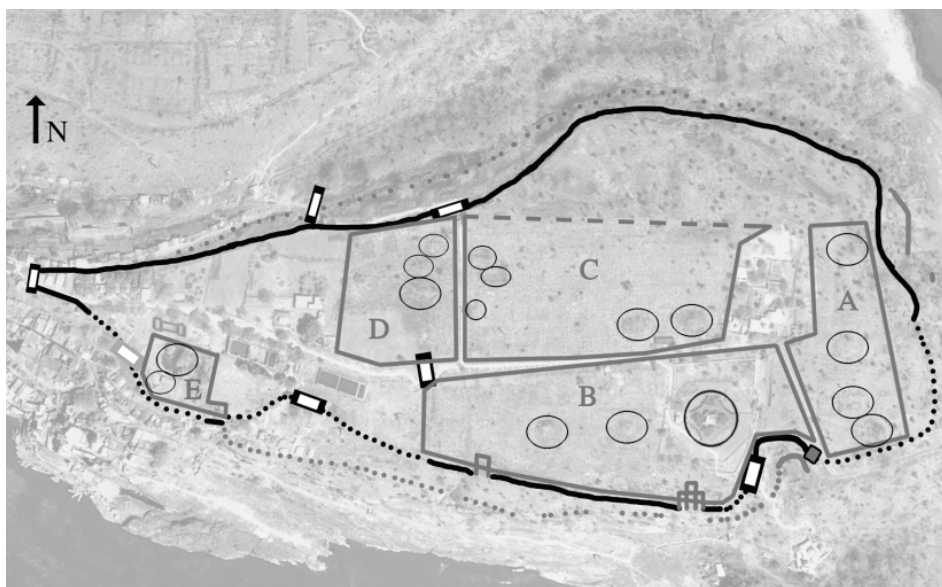
MĀNDHĀTĀ HILL



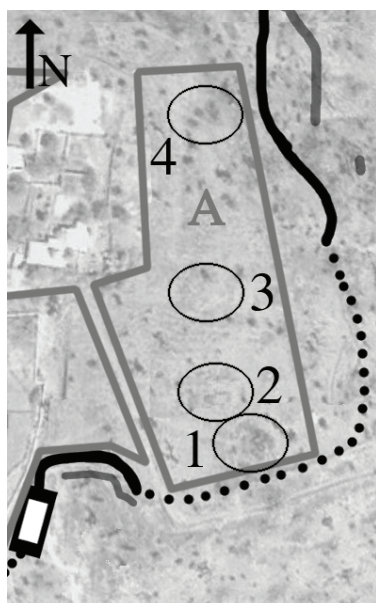
Map 4.2: Māndhātā hill, gateways, staircases and main footpaths.



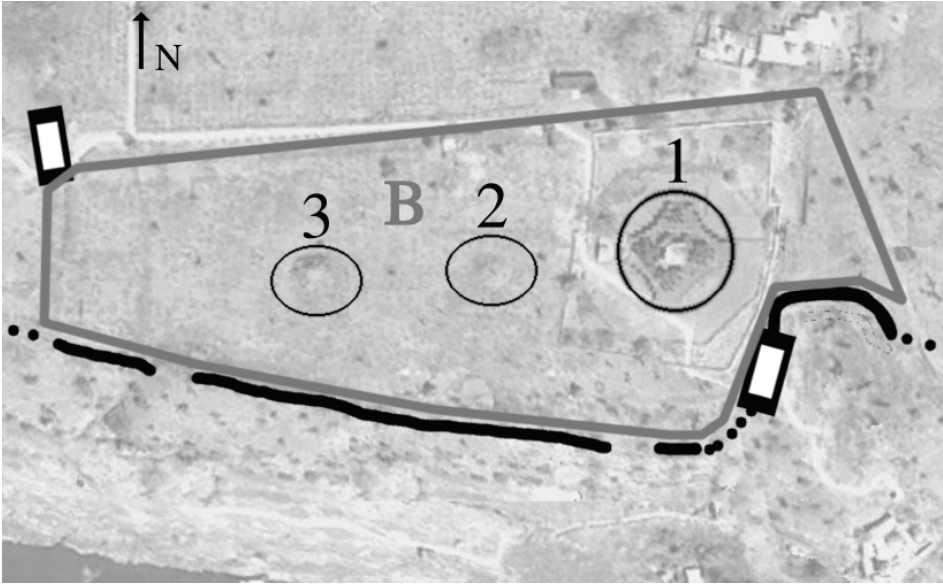
Map 4.3: Māndhātā hill, modern settlements.



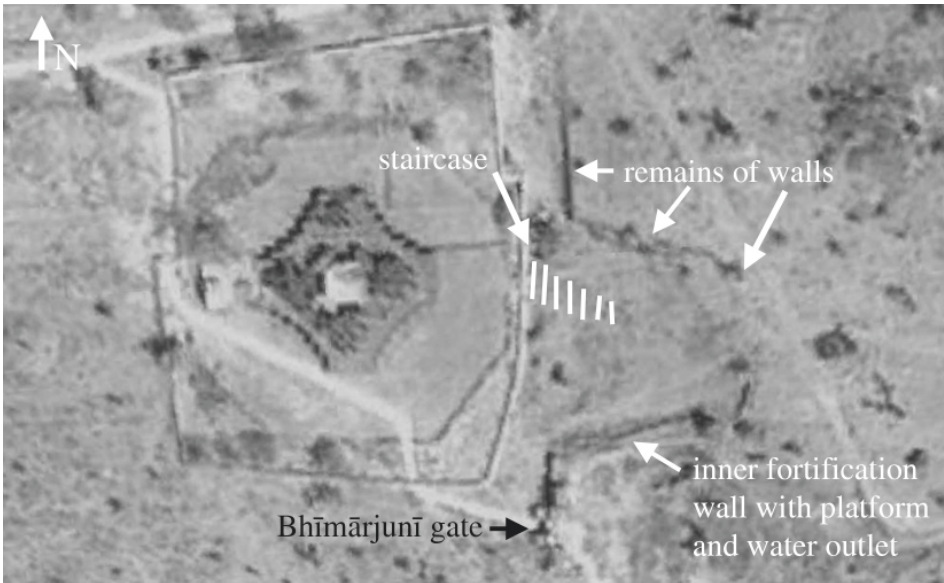
Map 4.4: Māndhātā hill, archaeological remains, settlement areas and structural mounds.



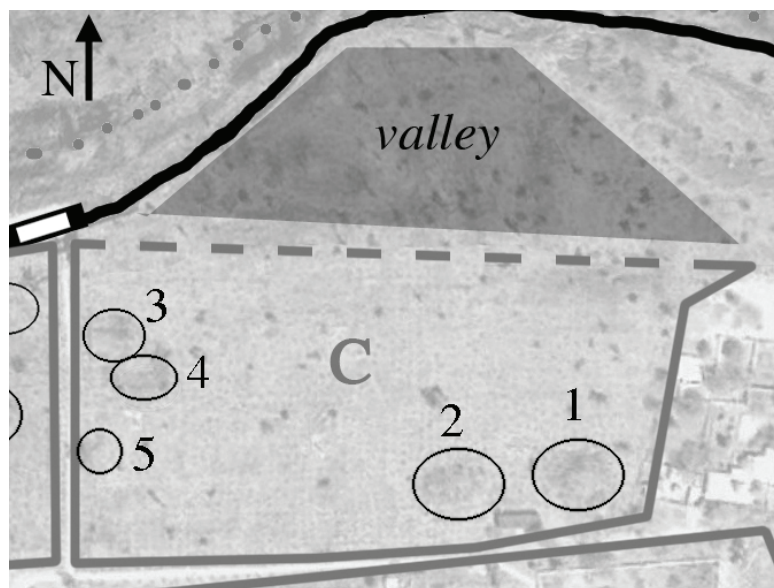
Map 4.5: Māndhātā hill, location of mounds in area A.



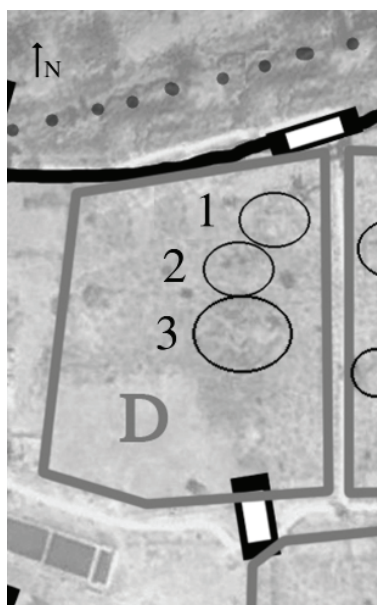
Map 4.6: Māndhātā hill, location of temple remains in area B.



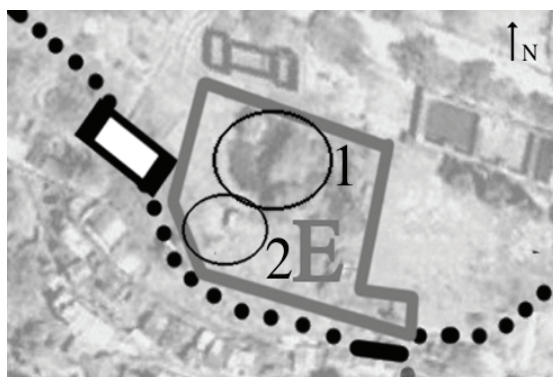
Map 4.7: Siddhanātha temple compound with surrounding area and structures.



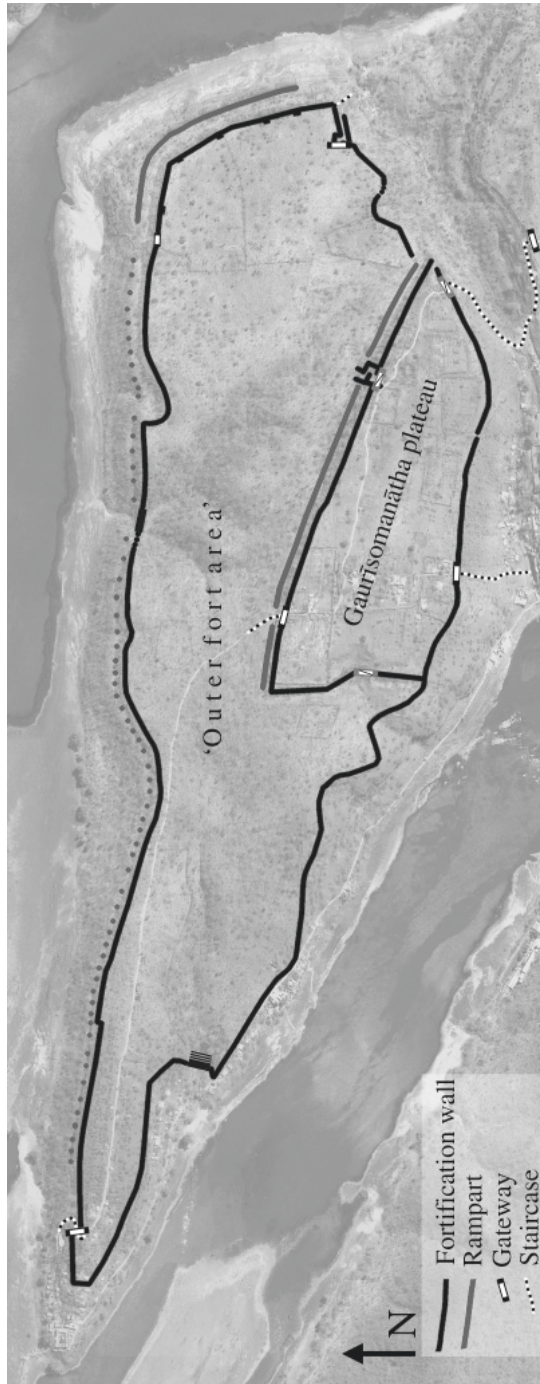
Map 4.8: Māndhātā hill, location of temple remains in area C.



Map 4.9: Māndhātā hill, location of structures in area D.



Map 4.10: Māndhātā hill, location of temples in area E.

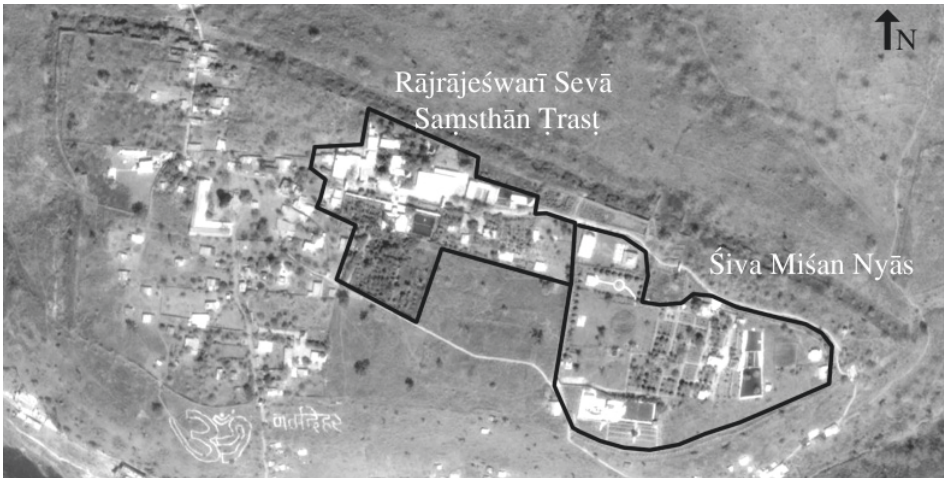


Map 5. Mucukund hill, fortification walls and gateways.

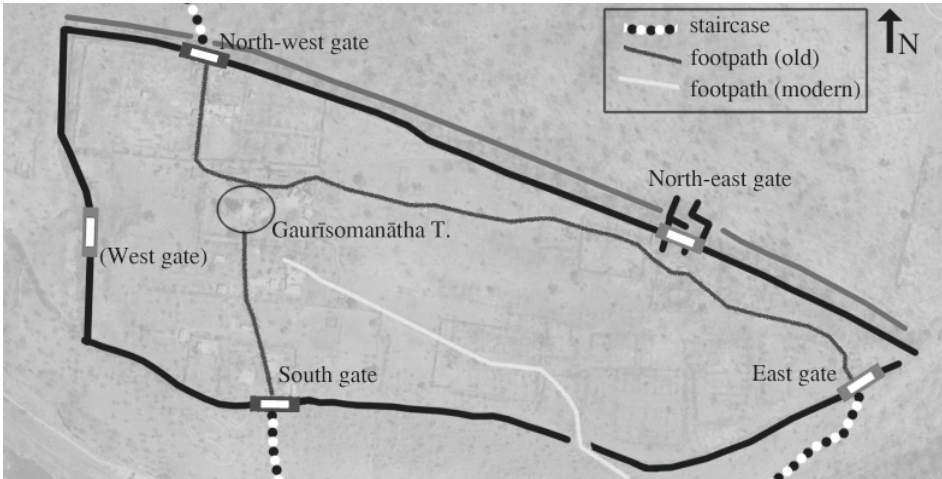
MUCUKUND HILL



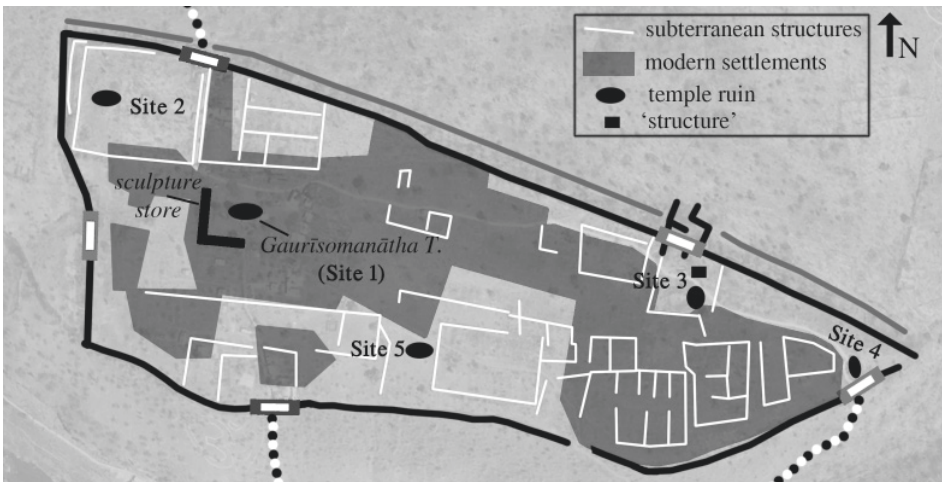
Map 6.1: Aerial view of the Gaurīśomanātha plateau (March, 2001).



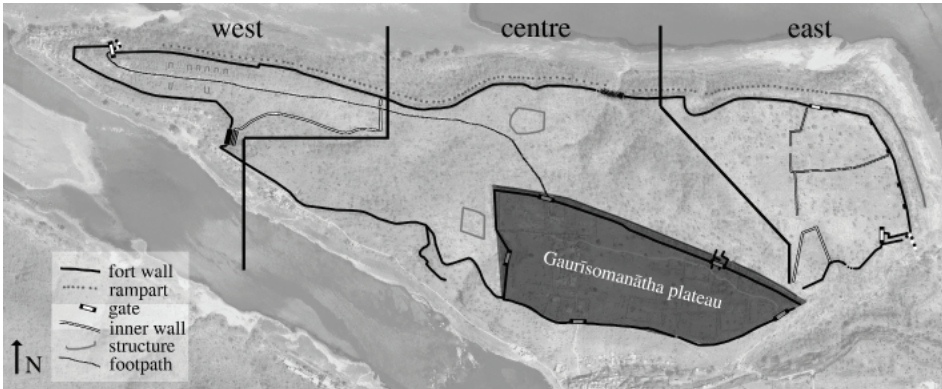
Map 6.2: Gaurīśomanātha plateau, present situation with encroachments by pseudo-religious trusts.



Map 6.3: Gaurīśomanātha plateau, staircases and footpaths.



Map 6.4: Gaurīśomanātha plateau, archaeological remains.

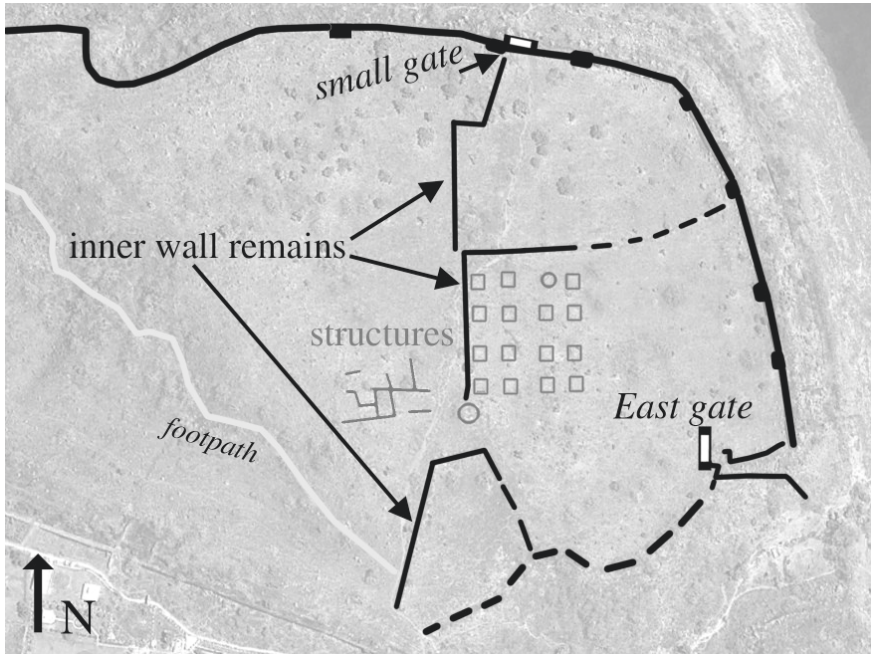


Map 7.1: Mucukund hill, the 'Outer fort', falling into three sections.

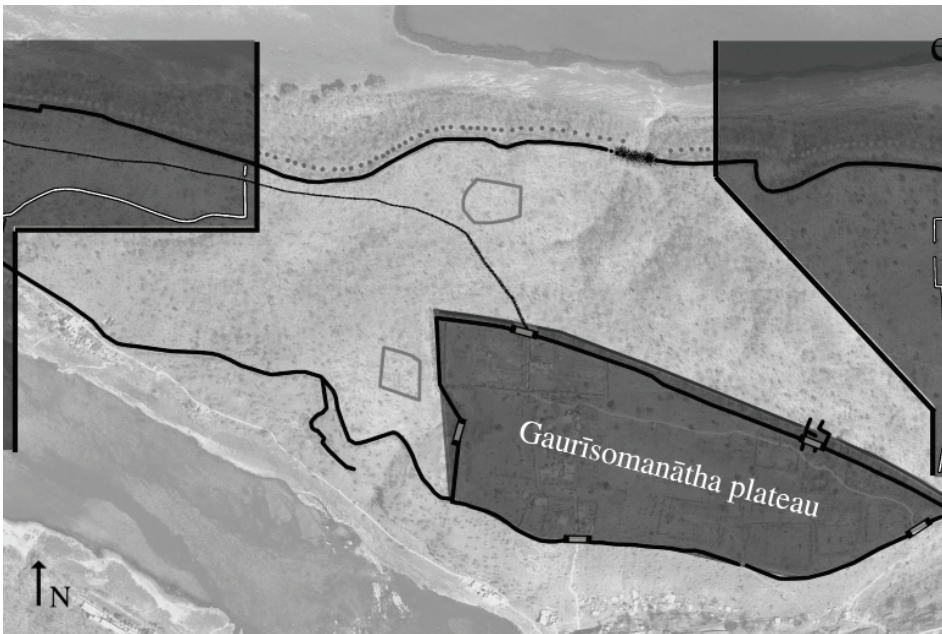


Map 7.2: Outer fort, eastern section, aerial view.

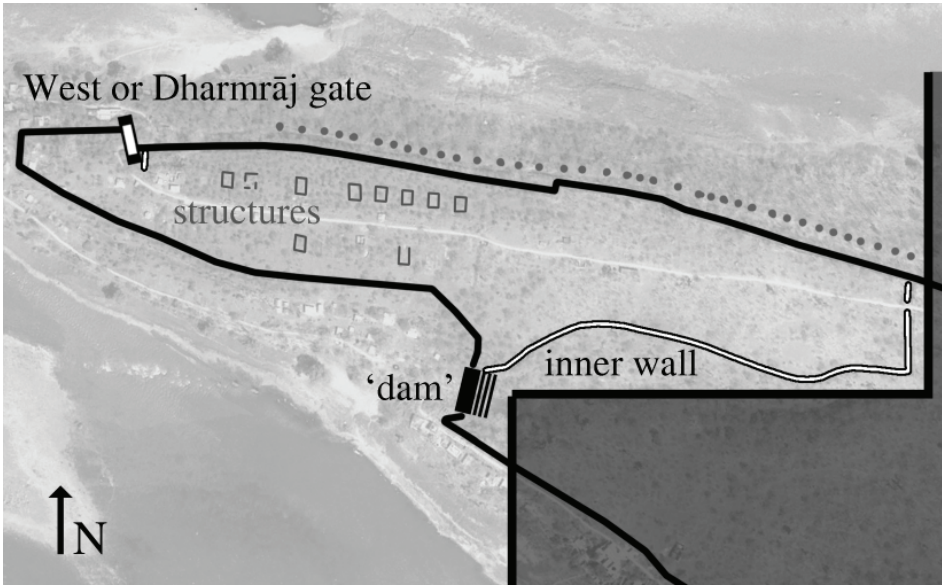
'OUTER FORT'



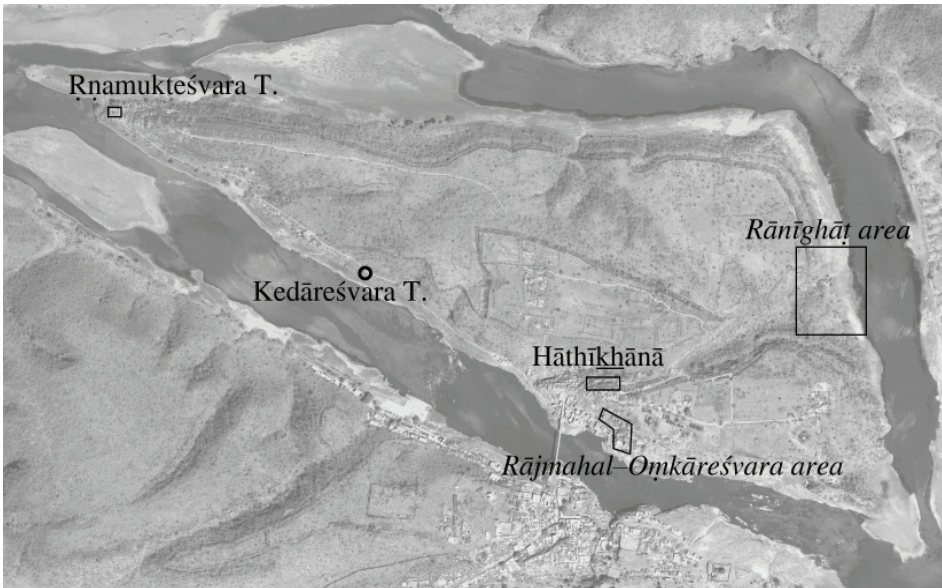
Map 7.3: Outer fort, eastern section, structural remains.



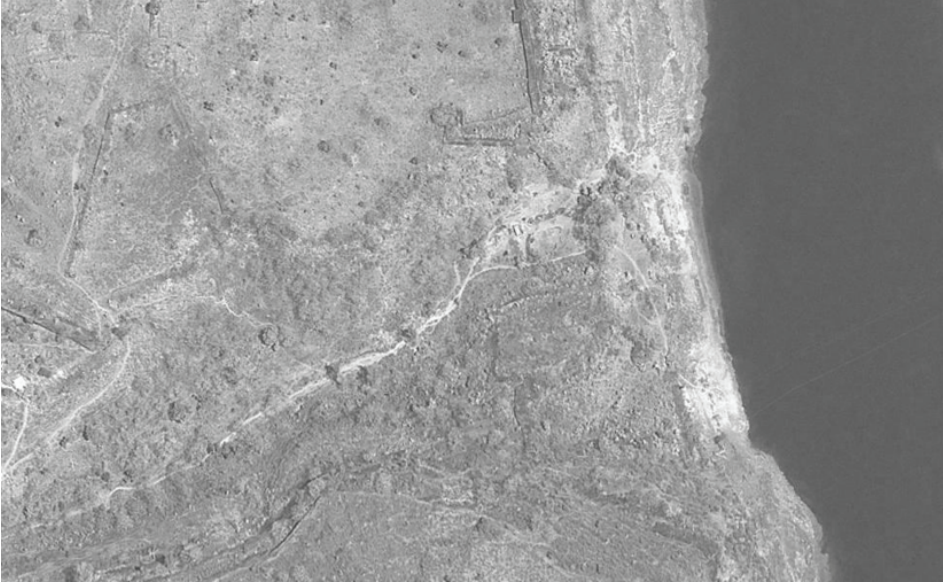
Map 7.4: Outer fort, central section, structural remains.



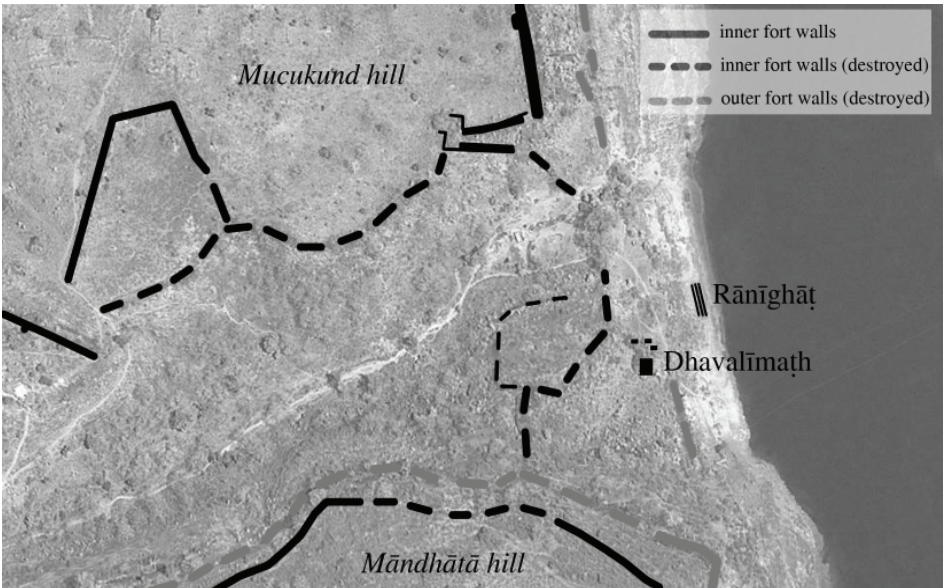
Map 7.5: Outer fort, western section, archaeological remains.



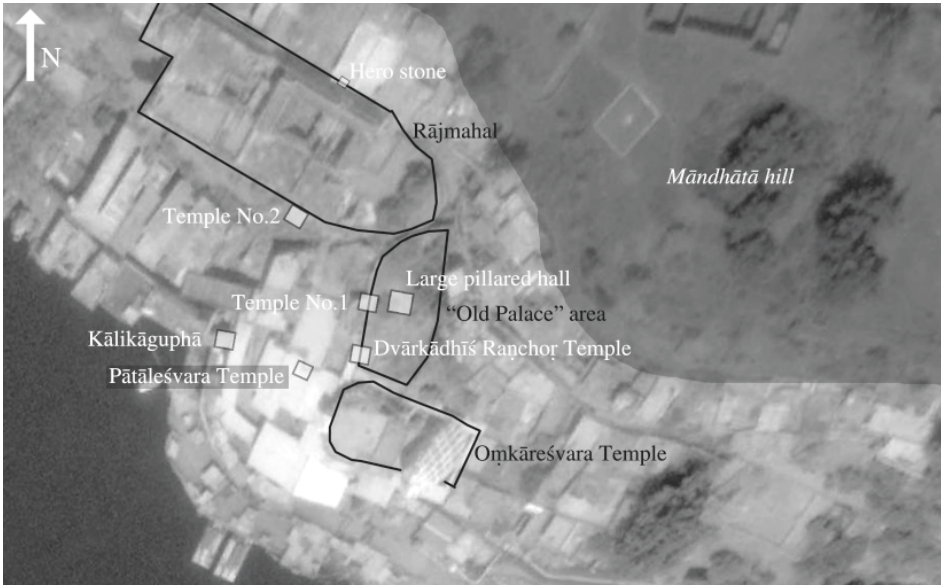
Map 8: Temples and structural clusters in the periphery, outside of fortified areas.



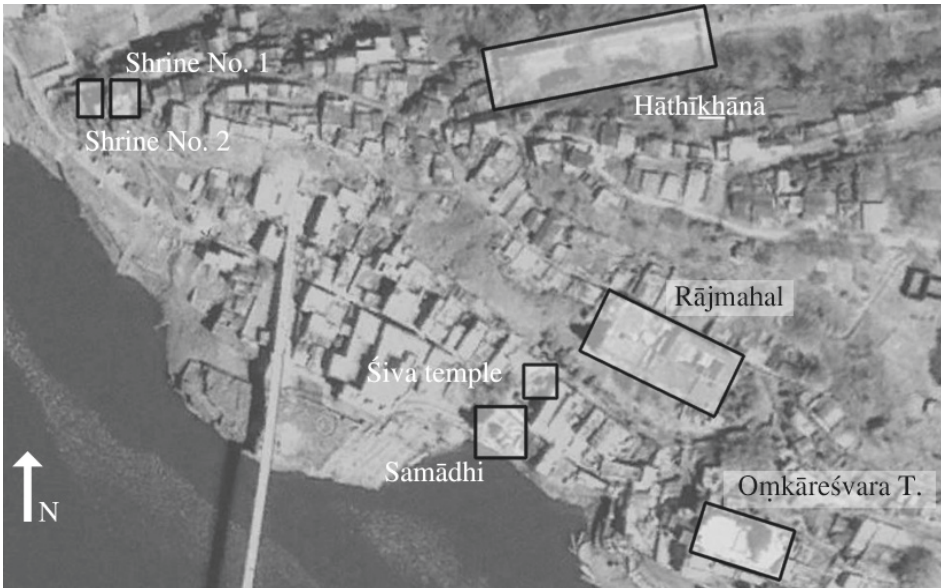
Map 9.1: The Rānīghāṭ area, aerial view.



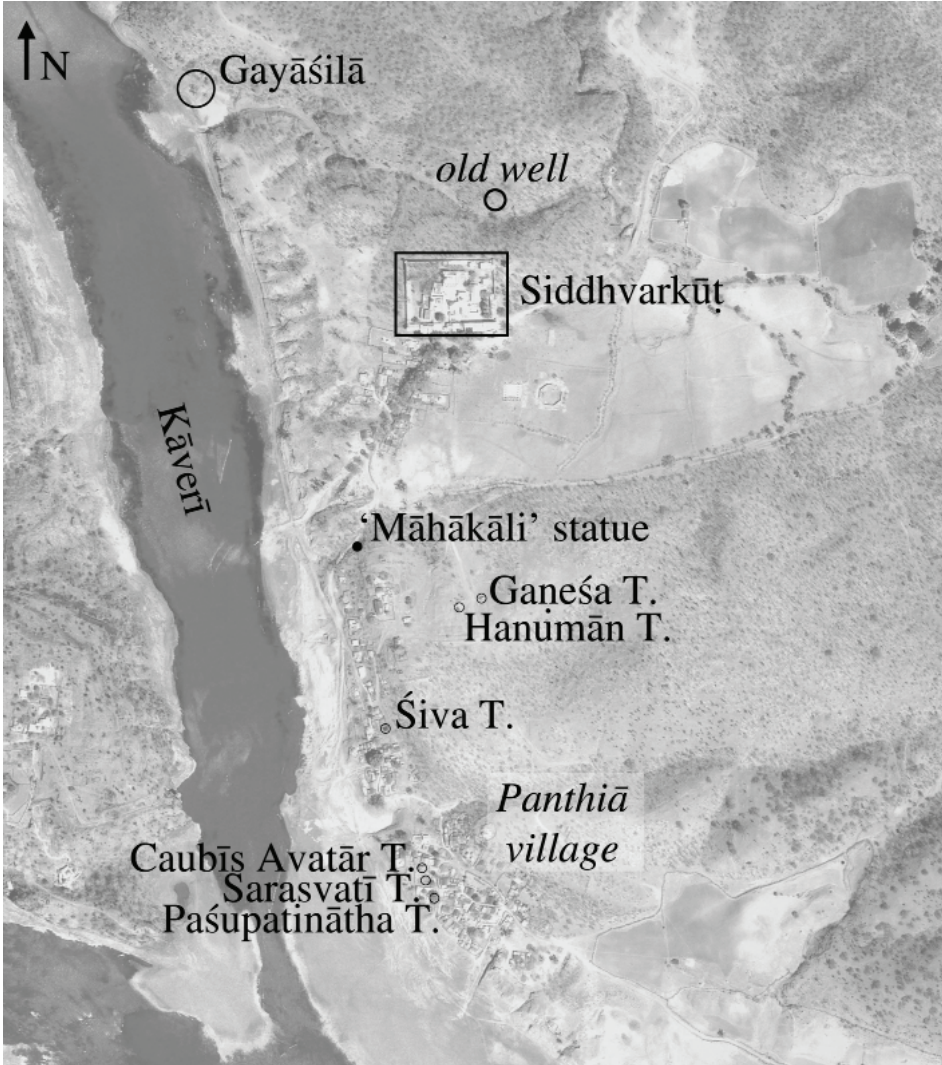
Map 9.2: Remains of fort walls and architectural structures in the Rānīghāṭ area.



Map 10.1: Śivpurī, monuments in the Rājmahal–Om̄kāreśvara temple area.



Map 10.2: Historic structures in the periphery of Śivpurī.

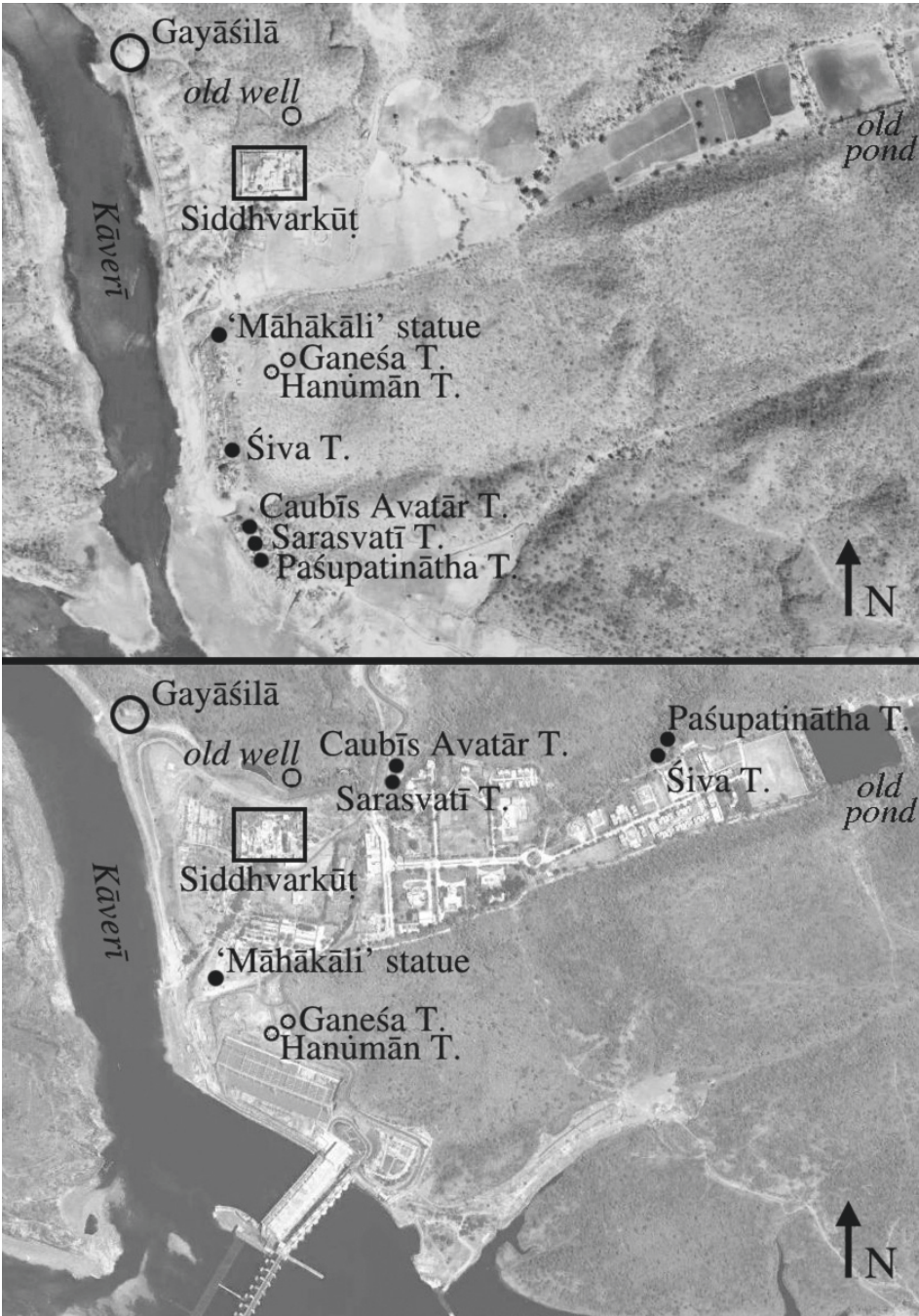


Map 11.1: Historic remains on the north bank of the Kāveri river (2001).



Map 11.2: Panthiā (a) before and (b) after the construction of the Omkāreśvar dam.

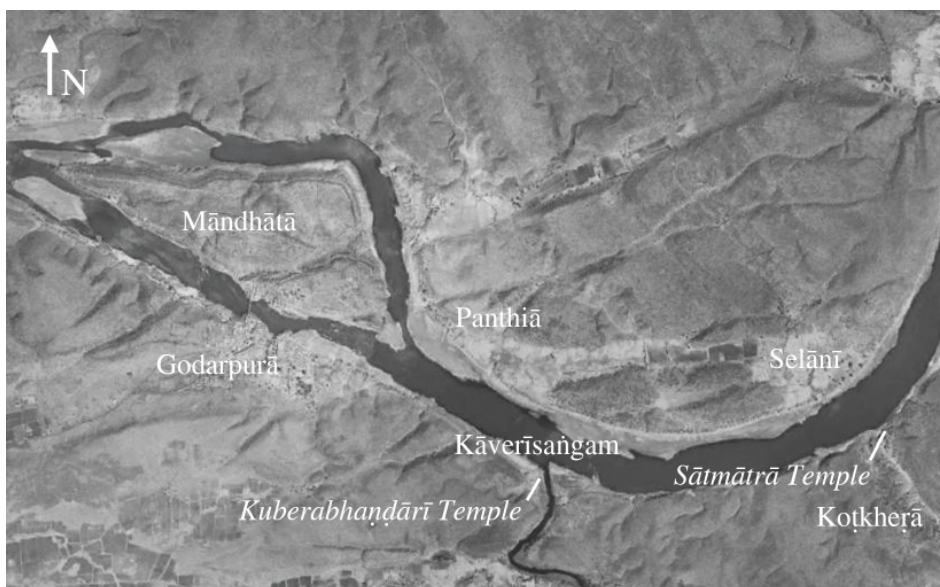
PANTHĪĀ



Map 11.3: Location of historic remains at Panthiā (a) before and (b) after the construction of the Omkāreśvar dam.



Map 12: Location of Gayāśilā.



Map 13: The Oṃkāreśvar *kṣetra* (prior to the dam construction).

