

ILLUSTRATIONS

PLATES



Plate 1.1: Godarpurā with Brahmāpurī (foreground, left) and Viṣṇupurī (background).



Plate 1.2: Śivpurī on Māndhātā island.

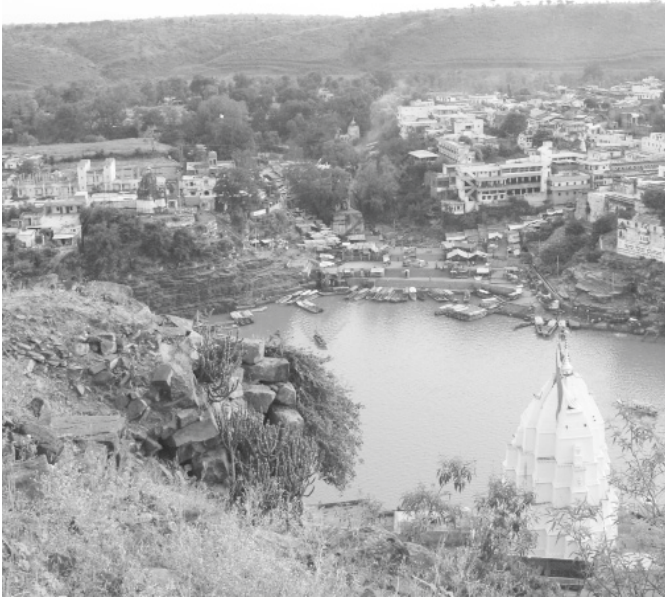


Plate 2.1: Godarpurā as seen from Māndhātā island (2013).

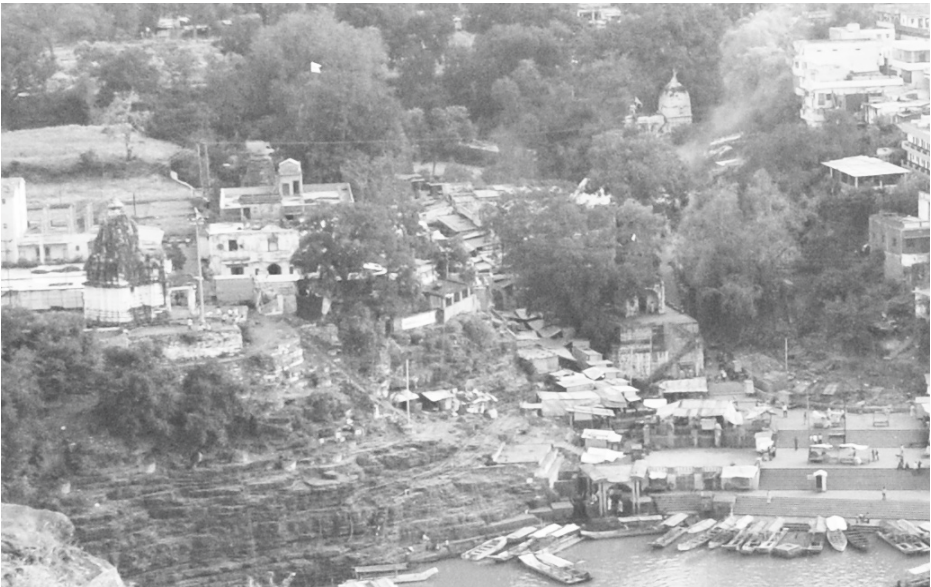


Plate 2.2: Close-up of the Kapilā ravine (2013).



Plate 2.3: Godarpurā as seen from Māndhātā island (ca. 1970).

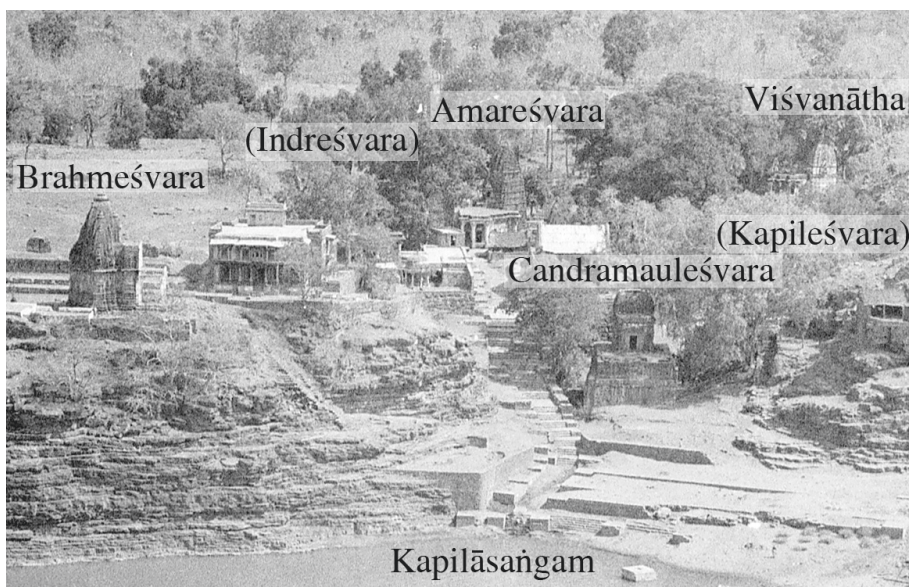


Plate 2.4: Close-up of the Kapilā ravine (ca. 1970). (Photos 2.3 and 2.4 by courtesy of Kālūrām Bhoī, Godarpurā.)



Plate 3.1: Old *praṇāla* at the Kapilāsangam.



Plate 3.2: Fortification wall to the west of the Amareśvara temple complex.



Plate 3.3: Reconstructed portion of fortification wall, with incorporated head of a sculpture.



Plate 3.4: Amareśvara temple complex seen from south-west.



Plate 4.1: Amareśvara temple, south-west corner.

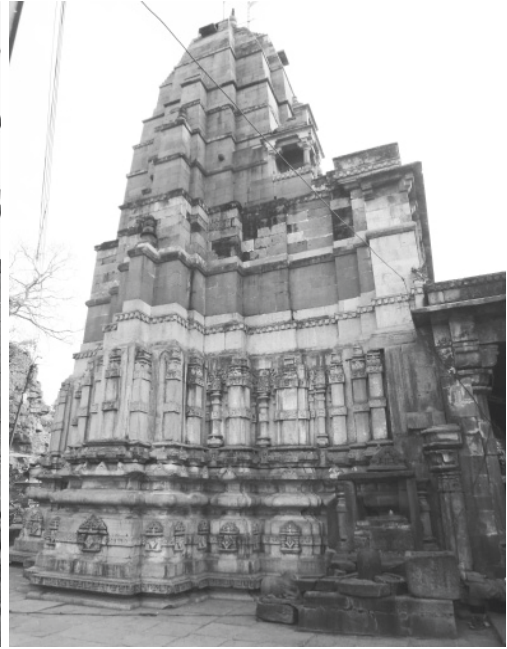


Plate 4.2: Amareśvara temple, north side.



Plate 4.3: Niche on the south wall with Andhakāri sculpture.



Plate 4.4: Door-frame of the *garbhagrha*, north (left) side.



Plate 5.1: Vṛddhakāleśvara temple, east face.



Plate 5.2: Vṛddhakāleśvara temple, north-west corner.



Plate 5.3: Vṛddhakāleśvara temple, entrance to the *garbhagrha*.



Plate 5.4: Lakṣmīnārāyaṇa, *antarāla* front wall, north niche.

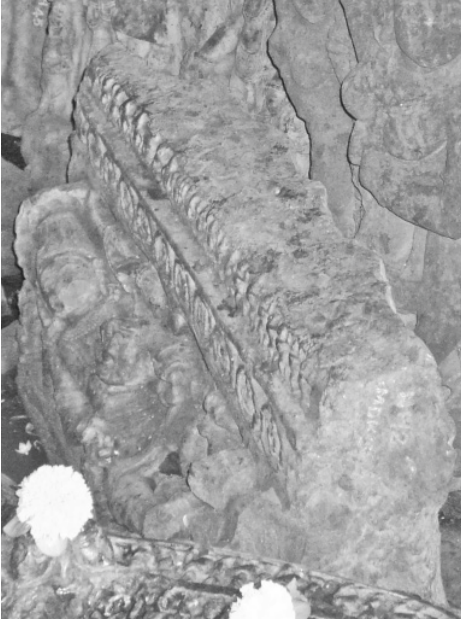


Plate 5.5: Śeṣaśāyin in the *garbhagrha*.



Plate 5.6: Two *avatāra* slabs, behind other fragments



Plate 6.1: Kuntī temple, view from south-east.



Plate 6.2: Kuntī temple, view from south-west.



Plate 6.3: Kuntī temple, *śikhara*, east face, sculpture of a seated goddess.



Plate 6.4: Kuntī temple, door-frame.



Plate 6.5: Kuntī temple, Gaṇeśa, *antarāla* front wall, south niche.



Plate 6.6: Kuntī temple, Lakṣmīnārāyaṇa, *antarāla* front wall, north niche.



Plate 7.1: Subsidiary shrines, view from the east (nos. 3 and 4 stand to the left, behind the *mandapa* with Śiva's bull on the platform.)



Plate 7.2: Shrine No. 1, *vyāla* head at the entrance.



Plate 7.3: Shrine No. 1, Varāha (left) and Sūrya (right) reliefs in the *garbhagrha*.



Plate 8.1: Hero stone, north face.



Plate 8.2: Hero stone, east face.



Plate 8.3: Hero stone, south face.



Plate 8.4: Hero stone, west face.



Plate 9.1: Viśvanātha temple, view from north-east.



Plate 9.2: Foundation stone with inscription.

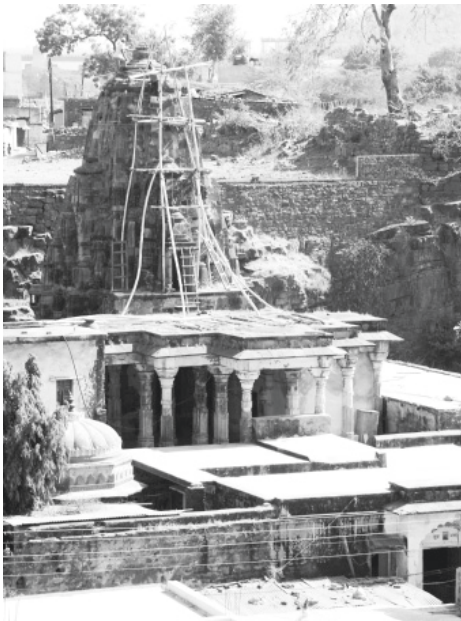


Plate 10.1: Indreśvara temple view from north-west.



Plate 10.2: Indreśvara temple śikhara, south-eastern side.



Plate 10.3: Indreśvara temple, *garbhagṛha* door-frame.



Plate 10.4: Indreśvara temple, *maṇḍovara*, north side.



Plate 11.1: Candramauleśvara temple, west face.



Plate 11.2: Candramauleśvara temple, north face.



Plate 12.1: Kapileśvara temple, general view from north-east.



Plate 12.2: Kapileśvara temple, south-western corner, remains of base.



Plate 12.3: Kapileśvara temple, *mūlaprāsāda*, north side.



Plate 12.4: Close-up of the *praṇāla*.



Plate 12.5: Door-frame, *garbhagrha*, south side.



Plate 12.6: Close-up of the *pīṭha* and *vedībāṇḍha*, north-western corner.



Plate 12.7: Scattered fragments of the *śikhara*.



Plate 12.8: Detail of cornerstone, right portion.



Plate 12.9: Detail of cornerstone, left portion.



Plate 13.1: Brahmeśvara temple, general view, west side.



Plate 13.2: Brahmeśvara temple, *mūlaprāsāda*, north side.



Plate 13.3: Brahmeśvara temple, *garbhagṛha* doorway.



Plate 13.4: Brahmeśvara temple, *kapilī*, upper storey, south side, statue of Viṣṇu.



Plate 13.5: Brahmeśvara temple, details of *śṛṅgas* in the *śikhara*, north-west side.



Plate 14.1: Course of the southern fortification wall to the west of Viṣṇupurī.



Plate 14.2: Remains of buildings.



Plate 15.1: Viṣṇu temple, view from south-east.



Plate 15.2: Viṣṇu temple, *mūlaprāsāda*, north side.



Plate 15.3: Inner pillars of the *maṇḍapa*.



Plate 15.4: Door-frame, *garbhagrha*, south side.



Plate 15.5: Lintel with *saptamātrikās*.



Plate 15.6: Lakṣmīnārāyaṇa, *antarāla*, south niche.



Plate 15.7: Standing Viṣṇu, *antarāla*, north niche.



Plate 15.8: Mathurā devapaṭṭa, Viṣṇu temple, maṅḍapa, south wall.



Plate 15.9: Loose sculpture of Viṣṇu.



Plate 15.10: Erotic sculpture, *mandapa*, south wall.



Plate 16.1: The Birkhalā hill, view from south-west.

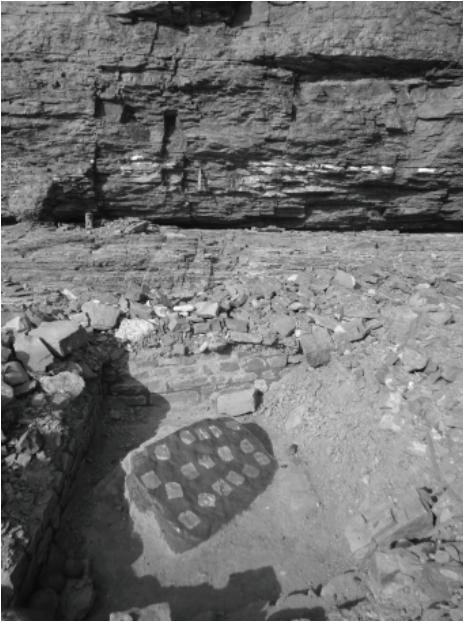


Plate 16.2: The Bhairavaśilā at the south-western foot of the Bīrkhalā hill.



Plate 17.1: Temple B1 from south-west, with remains fallen down the slope of the hill.



Plate 17.2: Temple B1 and surrounding area, view from north-west.



Plate 17.3: Temple B1, south-east side.



Plate 17.4: Temple B1, west side.



Plate 17.5: Temple B1, base of the *mūlaprāsāda*, south side.



Plate 17.6: Temple B1, inscribed *akṣaras*.



Plate 17.7: Temple B1, loose statue of *Viṣṇu*.



Plate 17.8: Temple B1, hero stone.



Plate 18.1: Structure B2, east side.



Plate 18.2: Structure B2, old door-frame in the eastern wall.



Plate 19.1: Platform B3, view from west.



Plate 19.2: Platform B3, view from east.



Plate 19.3: Platform B3, door lintel.

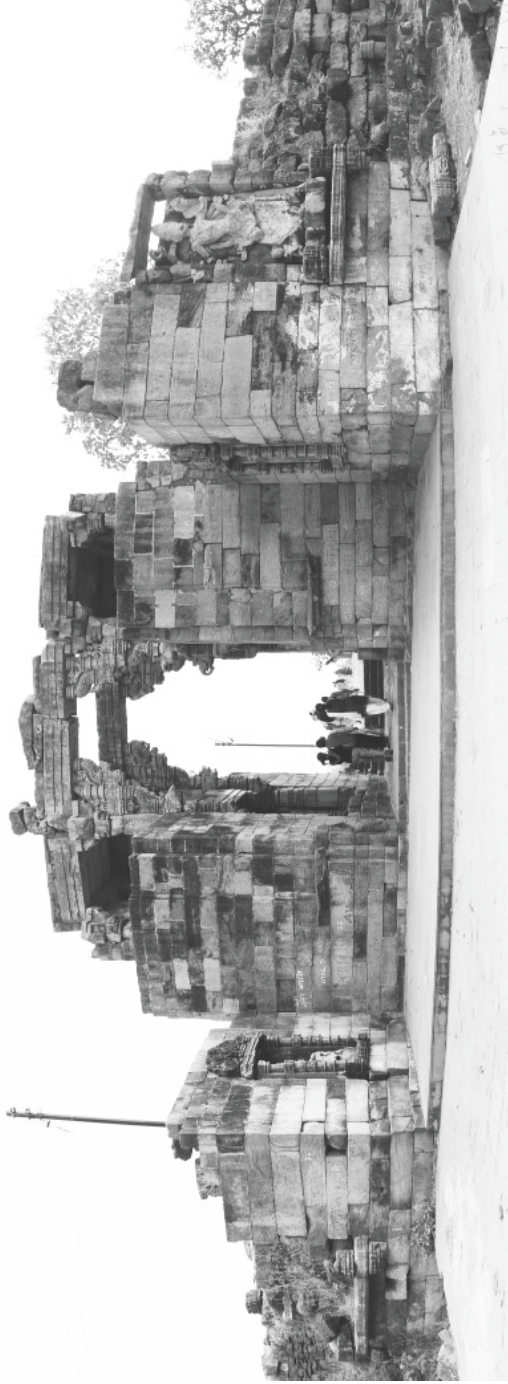


Plate 20.1: The North or Cāndsūraj gate, north side.

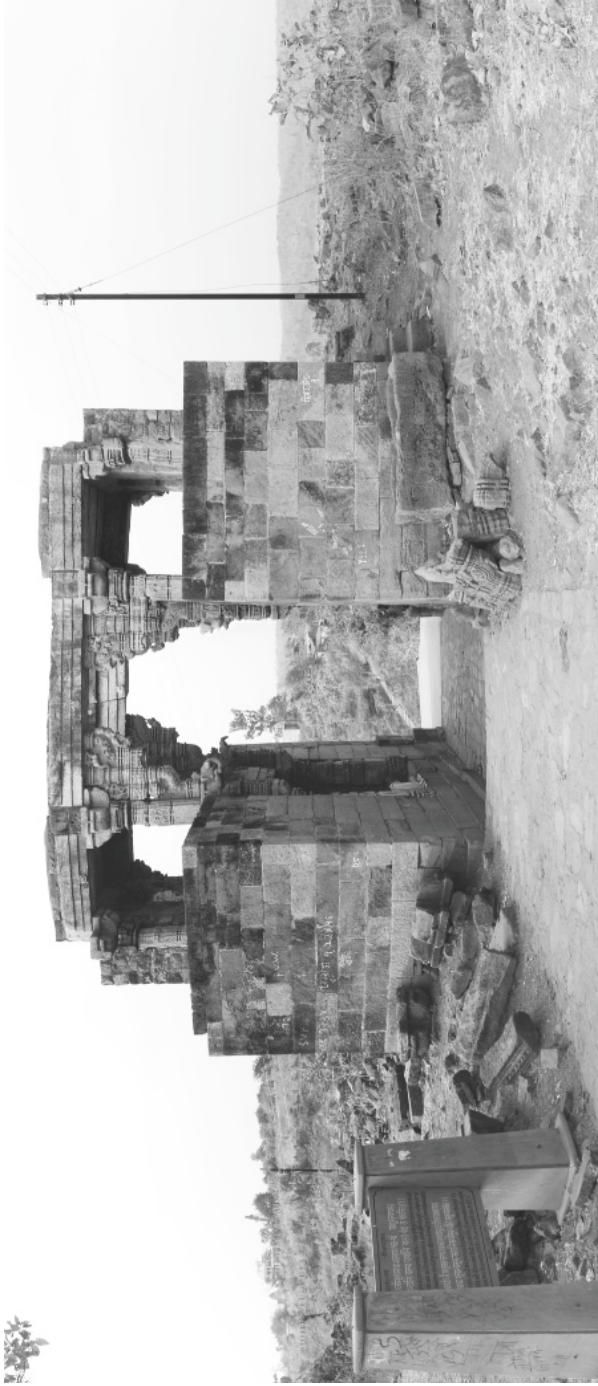


Plate 20.2: North or Cāndsūraj gate, south side.

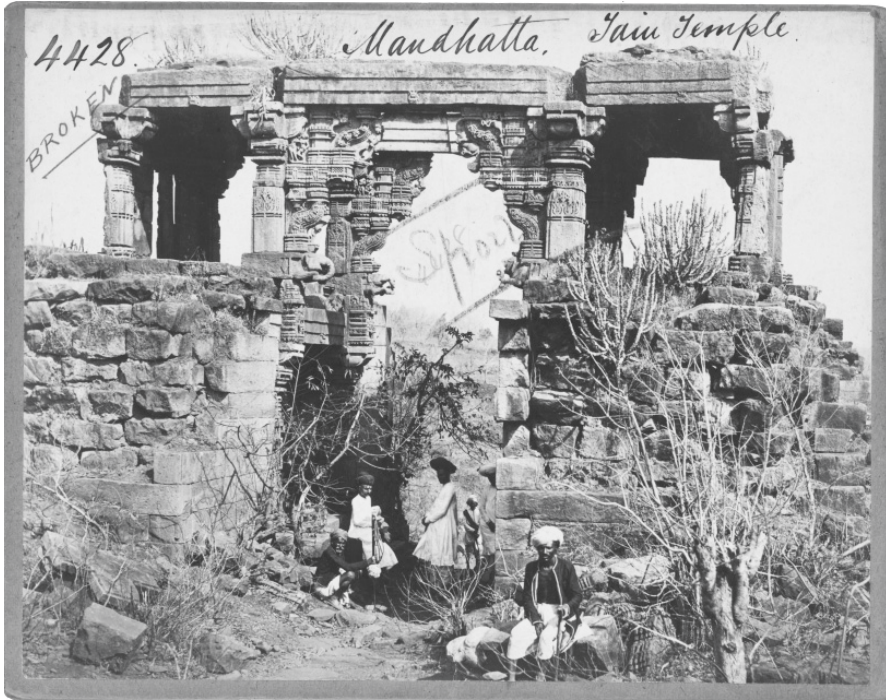


Plate 20.3: Cāndsūraj gate, south side. (Francis Frith 1850-70; by courtesy of the Victoria and Albert Museum, London).



Plate 20.4: Cāndsūraj gate, west side with entrance in the upper storey.



Plate 20.5: Cāndsūraj gate, *pratolī toraṇas*, view from south.



Plate 20.6: Cāndsūraj gate, south-east side, fragments of a *pratolī toraṇa*.



Plate 20.7: Cāndsūraj gate, door-frame in the upper storey, west side.



Plate 20.8: Inner niche, east side, Mahiṣāsūramardīnī.



Plate 20.9: Inner niche, west side, Gaṇeśa.



Plate 20.10: Outer niche, east side.



Plate 20.11: Fragments of Bhairava statue and a pilaster, outer niche, east side.



Plate 20.12: Outer niche, west side, Cāmuṇḍā.



Plate 20.13: North gate, loose sculptures in western recess of the gatehouse.



Plate 21.1: The East or Bhīmārjuni gate, view from east.



Plate 21.2: The East or Bhīmārjuni gate, view from west.

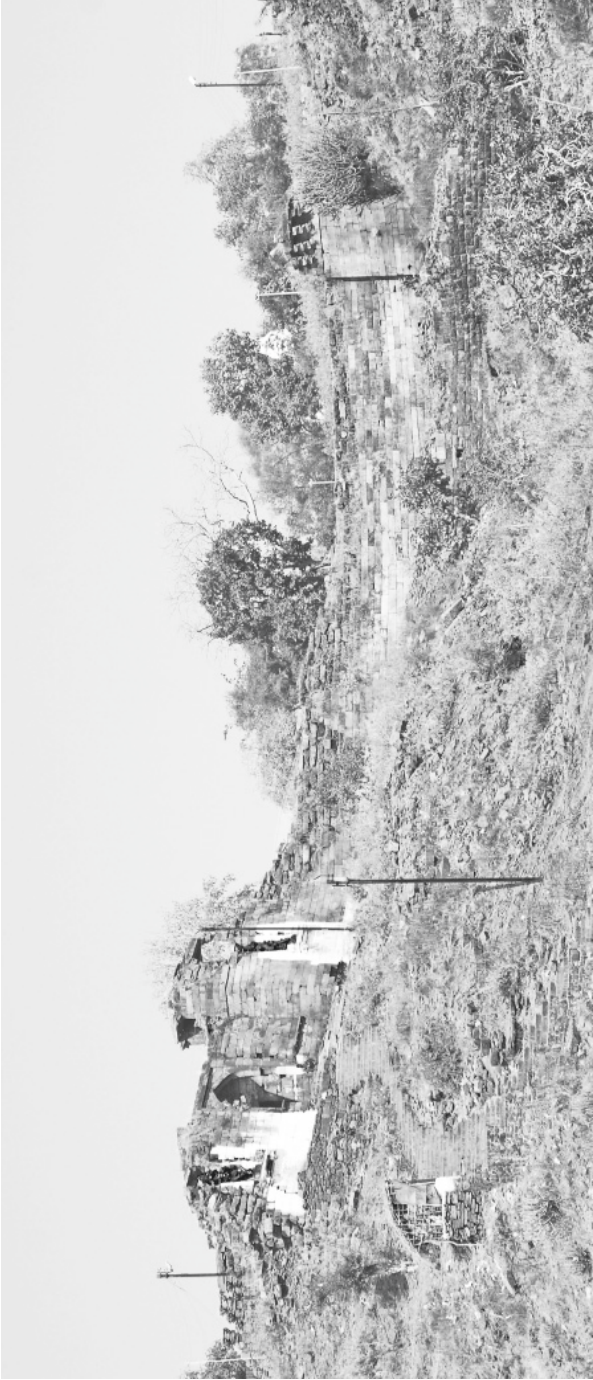


Plate 21.3: The East or Bhīmārjuni gate, view from south-east.



Plate 21.4: Loose door lintel, south of the Bhīmārjunī gate.



Plate 21.5: Old pillars and architraves in the upper storey of the Bhīmārjunī gate.



Plate 21.6: Socle of a niche, Bhīmārjunī gate, inner south side.



Plate 21.7: Bhīmārjunī gate, front wall, south niche.



Plate 21.8: Bhīmārjunī gate, front wall, north niche.



Plate 22.1: South gate, south side.



Plate 22.2: South gate, north side.



Plate 22.3: South gate, outer niche, west.



Plate 22.4: South gate, outer niche, east.



Plate 22.5: South gate, inner niche, west,
Mahiṣāsuramardini.



Plate 22.6: South gate, inner niche, east.



Plate 23: West gate, west side.



Plate 24.1: Outer north gate, view from south-east.



Plate 24.2: Outer north gate, view from north-east.



Plate 24.3: Outer north gate, detail of passage, inner east side.



Plate 24.4: Outer north gate, western row of pillars.



Plate 25.1: Inner or Huṇḍī-kuṇḍī gate, east side.



Plate 25.2: Inner or Huṇḍī-kuṇḍī gate, west side.



Plate 25.3: Area to the south-east of the Huṇḍī-kuṇḍī gate with Gaṇeśa sculpture.



Plate 25.4: Gaṇeśa sculpture south-east of the Huṇḍī-kuṇḍī gate.



Plate 25.5: Hanumān sculpture, lying north-east of the Huṇḍī-kuṇḍī gate.



Plate 26.1: Platform near Bhīmārjunī gate, view from south-west.



Plate 26.2: Platform near Bhīmārjunī gate with remains of a collapsed building, view from north-west.



Plate 26.3: Surakṣācaukī with remains of the inner fort wall, view from south.



Plate 26.4: Surakṣācaukī, view from north-east.



Plate 26.5: Surakṣācaukī, view from west.



Plate 26.6: Gate of a ruined structure.



Plate 26.7: Detail of gate, south side.



Plate 27.1: Kuntimātā temple (A1), general view, west side.



Plate 27.2: Kuntimātā temple (A1), loose *śṛṅga* near the south side.



Plate 27.3: Kuntimātā temple (A1), *garbhagrha* door-frame and statue of an eight-armed goddess.



Plate 28.1: Structure A2, general view from south-west.



Plate 28.2: Structure A2, stepped west front.



Plate 28.3: Loose sculpted architectural element near the north-west corner of structure A2.



Plate 29.1: Temple A3, general view from west.



Plate 29.2: Temple A3, eastern end of platform.



Plate 29.3: Temple A3, west side of platform, with remains of a *maṇḍapa*.



Plate 29.4: Loose architectural fragments near temple A3.



Plate 29.5: Temple A3, *śṛṅga*.



Plate 30.1: Mound of temple A4, general view from north-east.



Plate 30.2: Temple A4, exposed parts of *kumbha* and *kalaśa* portions of the *vedībandha*, north-east corner.



Plate 31: Northern limit of area B, earthwork running parallel to the footpath (right side). View from the east.



Plate 32.1: Siddhanātha temple, general view from north-west.



Plate 32.2: Siddhanātha temple, west side, with remains of a *mandapa* in front.



Plate 32.3: Siddhanātha temple, western entrance to *garbhagrha*, *udumbara* with inscription.

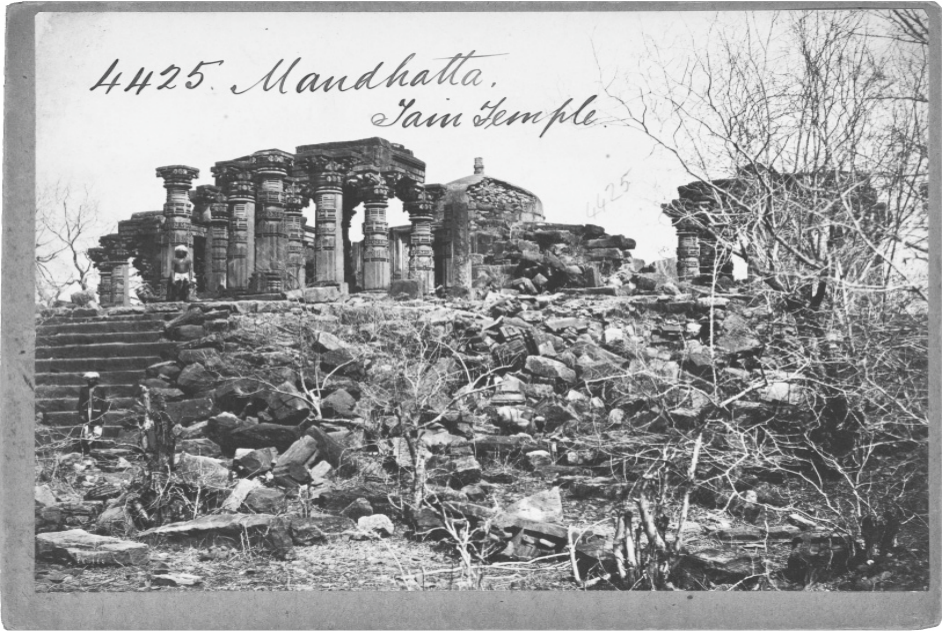


Plate 32.4: Siddhanātha temple, view from south-east. (Francis Frith, 1850-70; by courtesy of the Victoria and Albert Museum, London).



Plate 32.5: Siddhanātha temple, lintel with *dikpālas* above the western entrance.



Plate 32.6: Siddhanātha temple, fragment of lintel with *mātṛkā* figures, near the eastern compound wall.



Plate 32.7: Siddhanātha temple, remains of inner platform at the south-western corner.



Plate 32.8: Siddhanātha temple, *lalāṭabimba* with Lakulīśa above the eastern entrance.

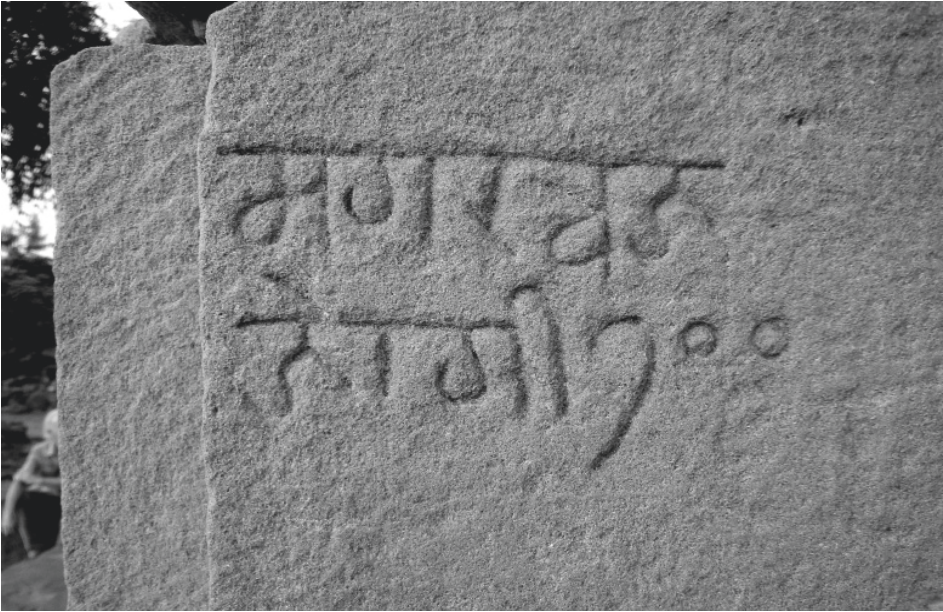


Plate 32.9: Siddhanātha temple, graffiti on pillar reading “magaradhvaja jogi 700”.



Plate 32.10: Bhairava on door-frame.



Plate 32.11: Old staircase to the east of the Siddhanātha temple and northern portion of a wall (right).



Plate 33.1: Māndhātā hill, temple B3, general view from north-east.



Plate 33.2: Māndhātā hill, temple B3, view from west.



Plate 33.3: Māndhātā hill, temple B3, south side, detail of exposed *vedībāndha* with inscribed characters.



Plate 34.1: Māndhātā hill, platform C1, view from south-east.



Plate 34.2: Māndhātā hill, platform C1, east side with *linga*.



Plate 35: Māndhātā hill, platform C2 and remains of an old wall, view from south.



Plate 36.1: Māndhātā hill, temple C3, view from south-east.



Plate 36.2: Temple C3, loose door lintel.



Plate 36.3: Temple C3, fragment of door-frame.



Plate 36.4: Temple C3, fragment of *śikhara* with *śrngas*.



Plate 37: Māndhātā hill, structure C4, view from south-west.



Plate 38.1: Māndhātā hill, temple C5, view from north-west.



Plate 38.2: Māndhātā hill, temple C5, view from south-west.



Plate 38.3: Māndhātā hill, temple C5, fragment of *śikhara* with *śṅgas*.



Plate 39.1: Māndhātā hill, structure D1, view from west.



Plate 39.2: Structure D1, sculptured fragments.



Plate 39.3: Māndhātā hill, structure D2, view from the north-west.



Plate 39.4: Structure D2, detail of *śṛṅga*.



Plate 39.5: Māndhātā hill, structure D3, view from the west.



Plate 40.1: Māndhātā hill, temple E1 (left) and structure E2 (right), general view from west.

MĀNDHĀTĀ HILL



Plate 40.2: Māndhātā hill, temple E1 and structure E2, general view from east.



Plate 40.3: Remains of fort wall and rectangular platform at the south-eastern edge of area E.



Plate 41.1: Temple E1, general view from west (with old sign board in front).



Plate 41.2: Temple E1, *kūtastambhas* of *jaṅghā* at the west side.



Plate 41.3: Temple E1, cavity at the eastern side, view from north. (The white arrow serves as orientation mark for comparison with Plate 41.4).



Plate 41.4: Temple E1, cavity at the eastern end, west side, view from north.



Plate 41.5: Temple E1, east side, pillar.



Plate 41.6: Temple E1, east side, pillar.



Plate 41.7: Temple E1, eastern cavity, west side, vertically moulded stones, probably remains of a door-frame.



Plate 41.8: Temple E1, fragment of a door-frame.



Plate 41.9: Temple E1, fragment of a doorsill.

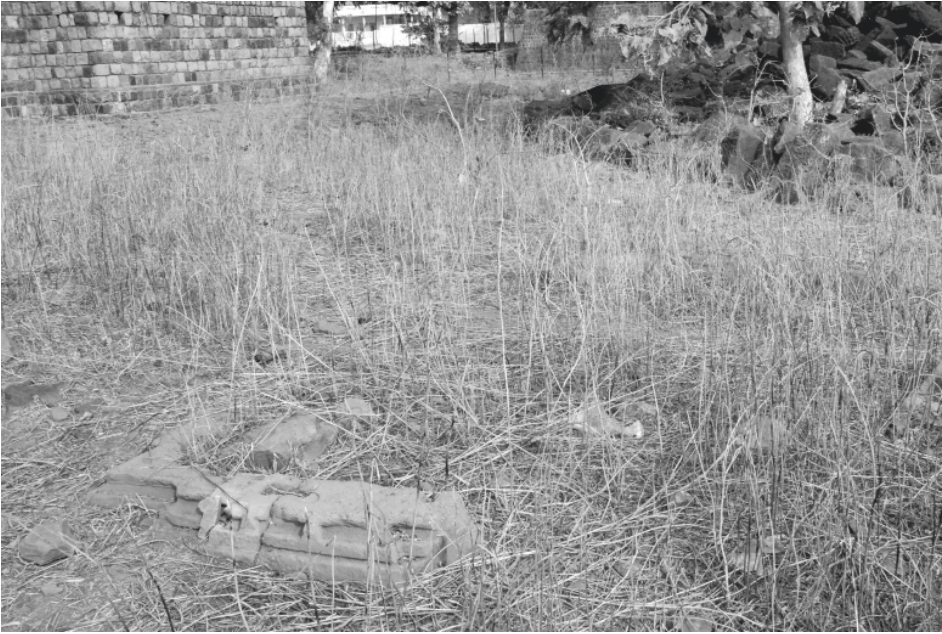


Plate 41.10: Remains of a platform to the north-west of temple E1.



Plate 42.1: Structure E2, general view, east side.



Plate 42.2: Structure E2, general view, west side.



Plate 42.3: Structure E2, south-east corner.



Plate 42.4: Structure E2, view from north-west.



Plate 42.5: Structure E2, north-west corner.



Plate 43.1: Fragment of a lintel fragment to the north of the defunct 'museum'.



Plate 43.2: Stray sculptures incorporated into a mud wall of a hut next to the Bhimārjunī staircase.



Plate 43.3: Stray sculptures kept in another hut near the Bhīmārjunī staircase.



Plate 43.4: Remains of the inner fort wall and temple fragments to the east of the South gate.



Plate 43.5: Detail of stray architectural fragments.



Plate 44.1: The Rājrajesvarī temple with giant Śiva statue, view from west.



Plate 44.2: Entrance to the Śiva Miśan Nyās with the demolished “Mantra Bank” building.



Plate 45.1: Gaurīśomanātha plateau, North-west gate, staircase with shops and temple (right), view from north.



Plate 45.2: Gaurīsoṃanātha plateau, North-west gate, staircase with temple, view from south-east.



Plate 46.1: Gaurīsoṃanātha plateau, North-east gate, view from north.



Plate 46.2: Gaurisomanātha plateau, North-east gate, panoramic view from west. (Caution, view is unnaturally distorted.)



Plate 46.3: Gaurisomanātha plateau, North-east gate, panoramic view from south-east. (Caution, view is unnaturally distorted.)



Plate 46.4: Gaurīśomanātha plateau, fortification wall near the North-east gate.



Plate 46.5: North-east gate, west side, sculpture of Mahiṣāsuramardini.



Plate 46.6: North-east gate, east side, sculpture of Kātyāyanī.



Plate 47.1: Gaurisomanātha plateau, East gate, view from west.



Plate 47.2: Gaurisomanātha plateau, East gate, view from south.



Plate 47.3: Gaurīśomanātha plateau, East gate, recess at the north side.



Plate 47.4: Gaurīśomanātha plateau, East gate, remains with recess, south side.



Plate 48.1: Gaurīśomanātha plateau, South gate and staircase, general view from south-east.



Plate 48.2: Māndhātā island, general view from south-east (Deen Dayal, 1880s; by courtesy of the British Library, London.)



Plate 48.3: Gaurīśomanātha plateau, South gate, south side.



Plate 49.1: Gaurīśomanātha plateau, west side, remains of fort wall with the suspected site of a western gateway in the foreground, view from south.



Plate 49.2: Gaurisomanātha plateau, west side, panoramic view of fort wall remains, view from east.



Plate 50.1: Gaurīśomanātha temple, south side.



Plate 50.2: Gaurīśomanātha temple, east side.



Plate 50.3: Gaurīśomanātha temple, view from north-west.



Plate 50.4: Gaurīśomanātha temple, view from south-east.



Plate 50.5: Gaurīśomanātha temple, Śiva's bull in *mandapa*.



Plate 50.6: Gaurīśomanātha temple, sculptures in *kumbhaka* and *janḡhā* at the north-eastern side.

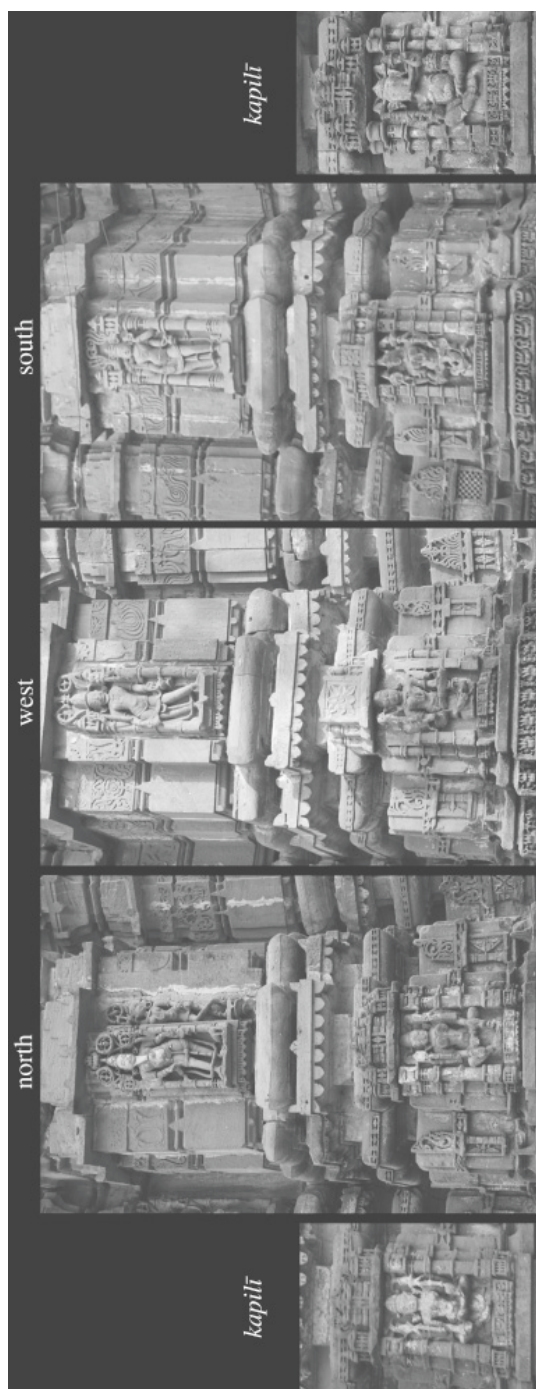


Plate 50.7: Gaurīśomanātha temple, sculptures in the *bhādra* niches of the *jāriḡhā* and corresponding *kumbhākas*.



Plate 51.1: Gaurīśomanātha plateau, site No. 2, footpath with old city walls north-west of the Gaurīśomanātha temple, view from north.



Plate 51.2: Gaurīśomanātha plateau, site No. 2, fortification wall, north-west corner.



Plate 51.3: Gaurīśomanātha plateau, site No. 2, temple(?) platform.



Plate 51.4: Gaurīśomanātha plateau, site No. 2, detail of doorsill.



Plate 51.5: Gaurīśomanātha plateau, site No. 2, *linga* and *pratoli*.

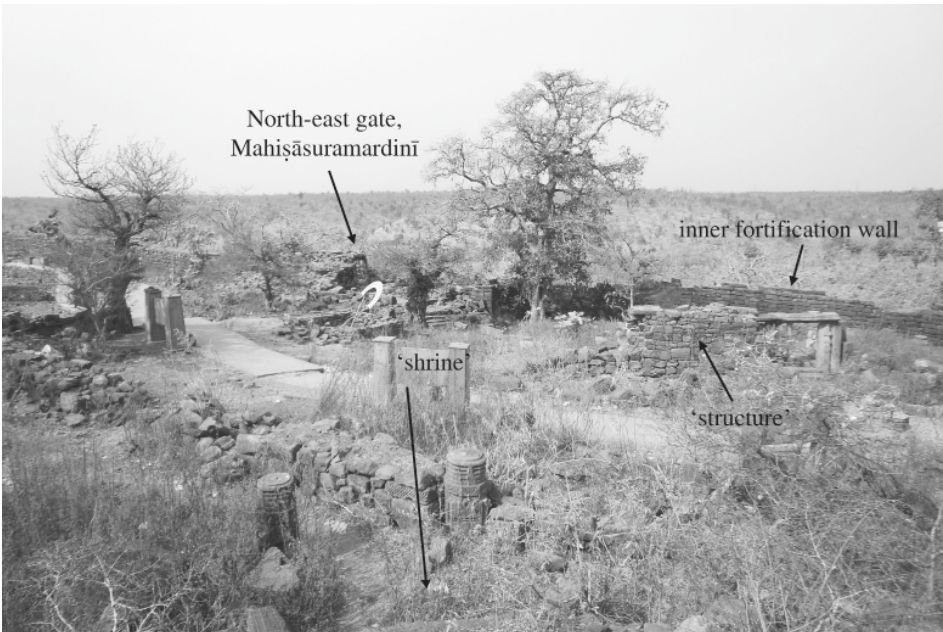


Plate 52.1: Gaurīśomanātha plateau, site No. 3, general view from south-east.



Plate 52.2: Gaurīśomanātha plateau, site No. 3, 'structure', general view from south-east.



Plate 52.3: Gaurīśomanātha plateau, site No. 3, inside of 'structure', view from north-west.



Plate 52.4: Gaurīśomanātha plateau, site No. 3, temple platform with staircase, general view from north-west.



Plate 52.5: Gaurīśomanātha plateau, site No. 3, top of temple platform with modern cement floor, view from south-west.



Plate 52.6: Gaurīśomanātha plateau, site No. 3, temple platform, *grāsapaṭṭī* base moulding.



Plate 52.7: Gaurīśomanātha plateau, site No. 3, temple platform, loose *śṛṅgas*.



Plate 52.8: Gaurīśomanātha plateau, site No. 3, temple platform, loose sculptures.



Plate 53.1: Gaurīśomanātha plateau, site No. 4 – 'Sitāmātā temple', general view from south-west.



Plate 53.2: Gaurīśomanātha plateau, site No. 4 – ‘Sītāmātā temple’, rear side, view from north-west.



Plate 53.3: Gaurīśomanātha plateau, site No. 4 – ‘Sītāmātā temple’, south side, detail of pillar mounted on sculptured stone block.



Plate 53.4: Gaurīsoṃanātha plateau, site No. 4 – ‘Sītāmātā temple’, fragments of superstructure.



Plate 53.5: Site No. 4 – ‘Sītāmātā temple’, sculpture of an eight(?)-armed goddess.



Plate 53.6: Site No. 4 – ‘Sītāmātā temple’, sculpture of Mahiṣāsuramardinī.



Plate 54.1: Gaurīśomanātha plateau, site No. 5, wall remains.



Plate 54.2: Gaurīśomanātha plateau, site No. 5, settlement remains.



Plate 54.3: Gaurīśomanātha plateau, site No. 5, remains of a shrine.



Plate 55.1: Gaurīśomanātha plateau, sculpture store and sculptures kept in the open.



Plate 55.2: Gaurīśomanātha plateau, inside the sculpture store.



Plate 55.3: Gaurīśomanātha plateau, Naṭeśa.



Plate 55.4: Gaurīśomanātha plateau, Lakṣmīnārāyaṇa.



Plate 55.5: Gaurīśomanātha plateau, broken panel depicting Gaṇeśa and *mātṛkās* holding children.



Plate 55.6: Gaurīśomanātha plateau, giant Gaṇeśa sculpture to the south-east of the Gaurīśomanātha temple.

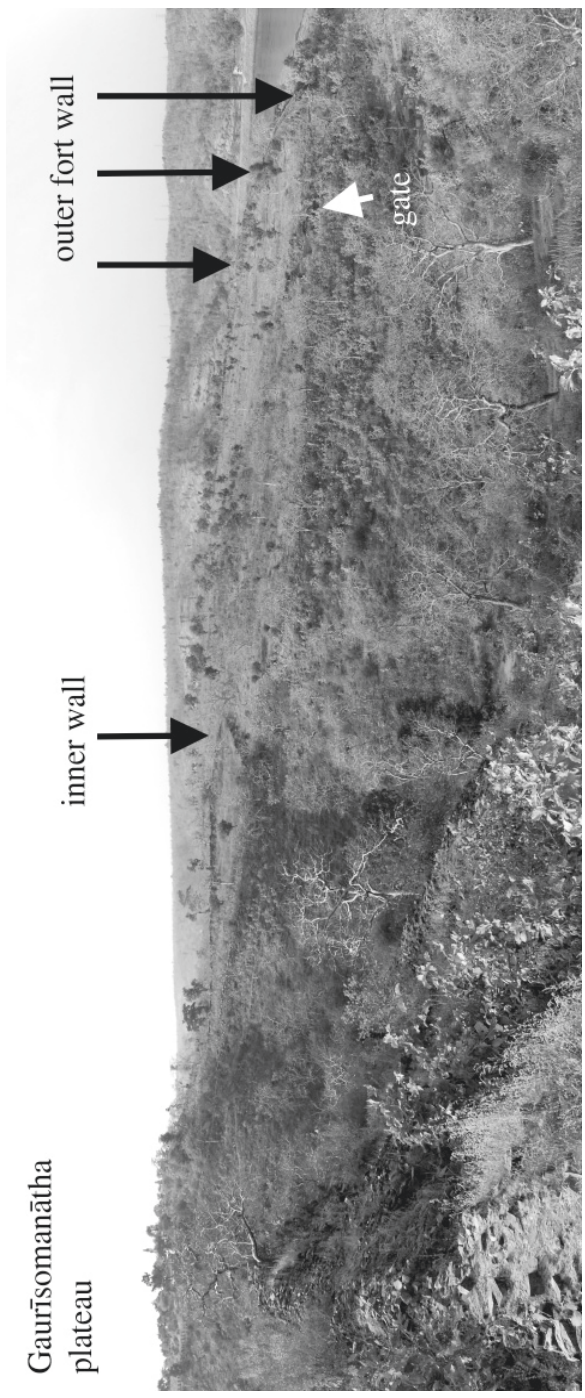


Plate 56.1: Outer fort, eastern section, general view from east (photo taken from Māndhātā hill).

MUCUKUND HILL – ‘OUTER FORT’



Plate 56.2: Outer fort, eastern section, south-eastern corner with remains of massive fort wall.



Plate 56.3: Outer fort, eastern section, East gate, view from south-east.



Plate 56.4: Outer fort, eastern section, East gate, view from west.



Plate 56.5: Outer fort, eastern section, northern passage, view from east.



Plate 57: Outer fort, central section, detail of northern outer fortification wall traversing a valley.



Plate 58.1: Outer fort, western section, stretch of northern outer fort wall with merlons.



Plate 58.2: Outer fort, western section, stepped construction in the course of the outer fort wall, view from south-east.



Plate 58.3: Outer fort, western section, Western or Dharmrāj gate, view from east.



Plate 58.4: Outer fort, western section, Dharmrāj gate, view from west.



Plate 58.5: Outer fort area, western section, square structure to the north of the foot-path, view from north-east.



Plate 58.6: Outer fort area, western section, square structure to the north of the footpath, view from west.



Plate 58.7: Outer fort, western section, sculpture of Naṭeśa, near Dharmrāj gate.



Plate 58.8: Sculpture of Mahiṣāsura-mardinī, near Dharmrāj gate.



Plate 59.1: Kedāreśvara temple, view from south-east.



Plate 59.2: Kedāreśvara temple, old door frame and pillars in front of the shrine.



Plate 60.1: Āṇamukteśvara temple, view from north-west.



Plate 60.2: Āṇamukteśvara complex, Dvārkaḍīśa shrine, view from south.



Plate 61.1: Rānighāṭ area, general view from east, with Māndhātā hill (left) and Mucukund hill (right).



Plate 61.2: Rānīghaṭ area, architectural fragments strewn along the bank of the Kāverī river.



Plate 61.3: Remains of a fortification wall near the south-eastern corner of Mucukund hill.



Plate 61.4: The Rānīghāṭ (lower middle) and the Dhavalīmaṭh (upper left), general view from east.



Plate 61.5: The Rānīghāṭ, view from north-east.



Plate 62.1: Dhavalimath, general view from north.



Plate 62.2: Dhavalimath, general view from north-east.



Plate 62.3: Dhavalimath, wall with entrances between the front and rear halls. (Photomontage, optically distorted; the four pillars in front stand in line in reality, as do the three entrances.)



Plate 62.4: Dhavalimath, 'split' pillars at the eastern flank of the entrance, seen from inside, south-west.



Plate 62.5: Dhavalimath, vertical slabs at the outer north-eastern side of the verandah.



Plate 62.6: Dhavalimath, front hall, destroyed eastern side.



Plate 62.7: Dhavalimath, front hall, destroyed western side.



Plate 62.8: Dhavalimath, mouldings at the south-eastern corner.



Plate 62.9: Dhavalimath, outer south wall with base mouldings (arrow), view from north.



Plate 62.10: Dhavalimath, western entrance to the rear hall.



Plate 62.11: Dhavalimath, eastern entrance to the rear hall.



Plate 62.12: Dhavalimath, central entrance to the rear hall.



Plate 62.13: Dhavalīmaṭh, eastern door, *dvārapāla* figures.



Plate 62.14: Dhavalīmaṭh, western door, *dvārapāla* figures.



Plate 62.15: Dhavalīmaṭh, central door, *dvārapāla* with attendant figures and doorsill.



Plate 62.16: Inscription “कान्स” above *dvārapāla*, eastern passage, right side.



Plate 62.17: Dhavalīmaṭh, *lalāṭabimba*, central passage.



Plate 62.18: Dhavalīmaṭh, *lalāṭabimba*, eastern passage.



Plate 62.19: Dhavalīmaṭh, *lalāṭabimba*, western passage.



Plate 62.20: Eastern lintel with sitting female figures in miniature shrines.



Plate 62.21: Western lintel with sitting female figures in miniature shrines.



Plate 62.22a: Central lintel with sitting figures, left side.



Plate 62.22b: Central lintel with sitting figures, right side.



Plate 62.23: Dhavalīmaṭh, rear hall, eastern window in back wall.



Plate 62.24: Dhavalīmaṭh, rear hall, western window in back wall.



Plate 62.25: Dhavalimath, rear hall, west side.



Plate 62.26: Dhavalimath, rear hall, east side (eastern wall partly collapsed).



Plate 62.27: Dhavalīmaṭh, rear hall, inscriptions on a pillar and a pilaster.



Plate 63.1: Rānīghāṭ area, remains of structures to the north of the Dhavalīmaṭh.



Plate 63.2: Platform of a structure to the north-west of the Dhavalimath.



Plate 64.1: Temple fragments to the north-east of the Dhavalimath.



Plate 64.2: Remains of a temple base to the north-east of the Dhavalīmaṭh.



Plate 64.3: Loose temple sculpture, near the Dhavalīmaṭh on a footpath down to the Kāveri.

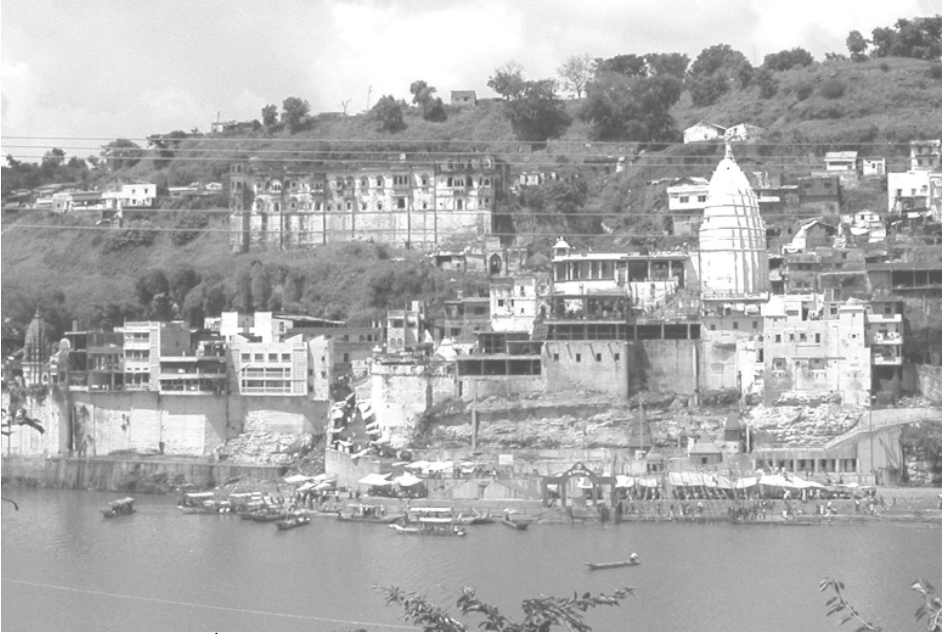


Plate 65.1: View of Śivpurī on Māndhātā island, with Rājmaḥal and Omkāreśvara temple.



Plate 65.2: Śivpurī, 'Old mahal' area with Omkāreśvara temple (2014, view from the Rājmaḥal).



Plate 66.1: Location of the Kālikāguphā (below the brick vault, right).



Plate 66.2: Entrance to the Kālikāguphā.



Plate 66.3: Kālikāguphā, central and southern aisles with entrances.



Plate 66.4: Kālikāgūphā, southern aisle (view to the rear wall).



Plate 66.5: Kālikāgūphā, north-eastern pillar, west face.



Plate 66.6: Kālikāgūphā, south-eastern pillar, west face.



Plate 66.7: Kālikāguphā, eastern pilaster on south wall, with sculpture of a human couple.



Plate 66.8: Kālikāguphā, narrow staircase at the north-eastern corner.

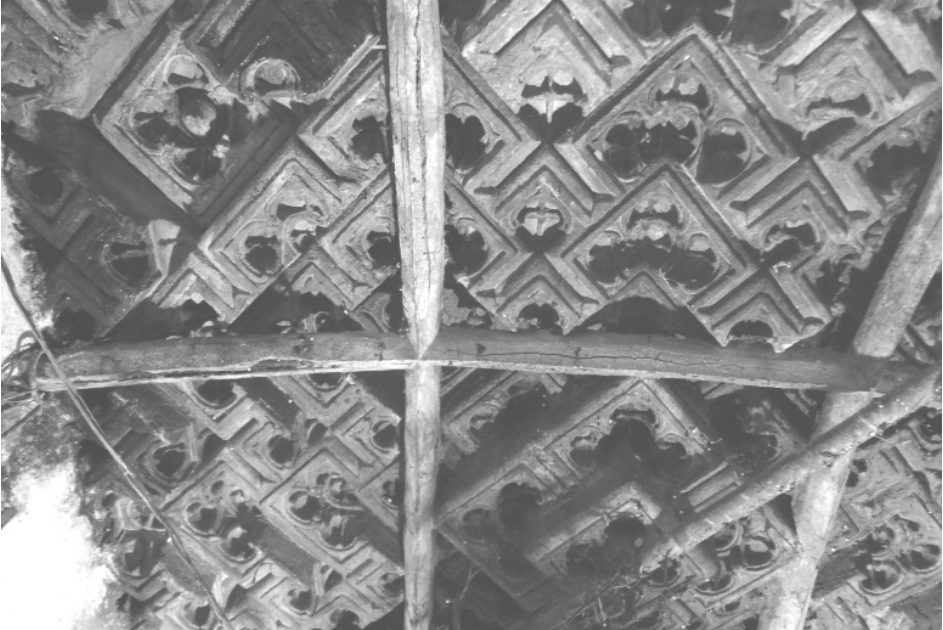


Plate 66.9: Kālikāguphā, detail of rock-cut ceiling.



Plate 67.1: Statue of standing Viṣṇu, near Omkāreśvara temple.



Plate 67.2: Isolated mukhamāṇḍapa with stray fragments, view from south.



Plate 68.1: Entrance to the Pātāleśvara temple.



Plate 68.2: 'Antechamber' of the Pātāleśvara temple.



Plate 68.3: Pātāleśvara temple, entrance to *garbhagrha*.



Plate 68.4: Pātāleśvara temple, *śivaliṅga* inside the *garbhagrha*.



Plate 68.5: Pātāleśvara temple, doorsill and flanking *dvārapālas*.



Plate 68.6: Pātāleśvara temple, lintel with *lalāṭabimba* showing Gaṇeśa and a seated female deity above.



Plate 69.1: Omkāreśvara temple (2010), general view of south side, from Godarpurā.

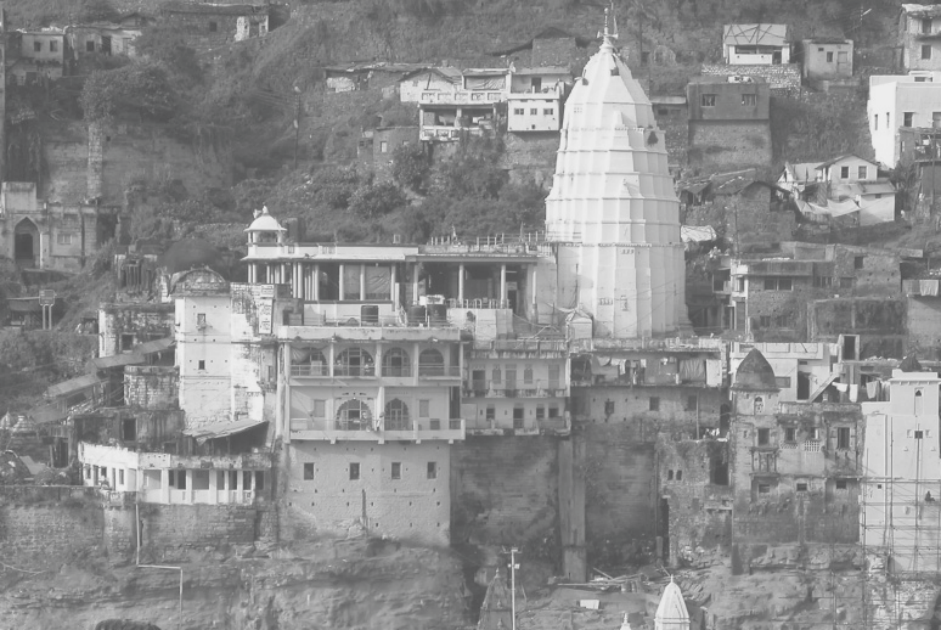


Plate 69.2: Omkāreśvara temple (2006), south side.

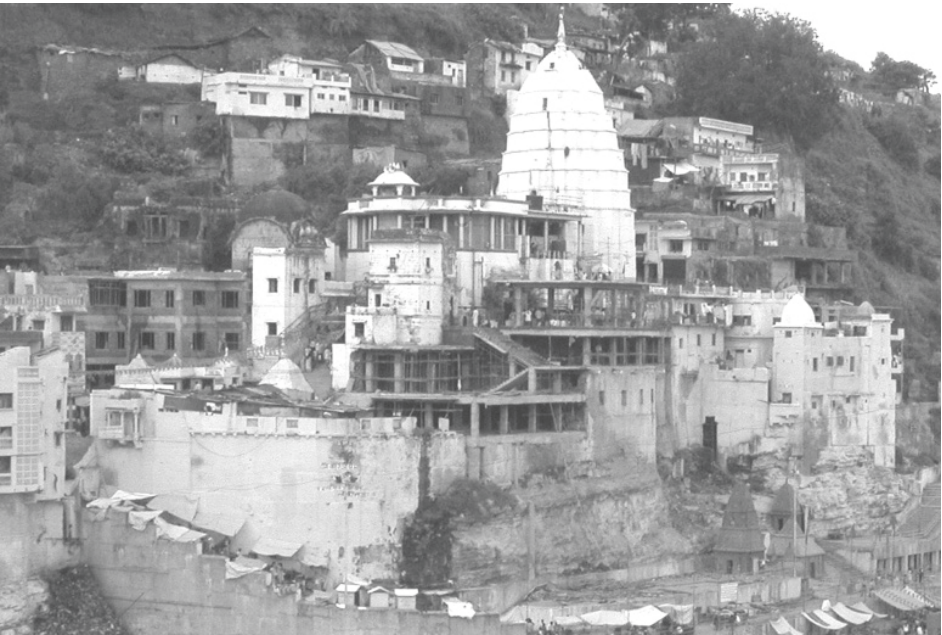


Plate 69.3: Omkāreśvara temple, view from south-west during Jaypee's renovation work, September 2007.



Plate 69.4: Omkāreśvara temple, base and wall of the *mūlaprāsāda*, north side (view from below).



Plate 69.5: Omkāreśvara temple, base and wall of the *mūlaprāsāda*, north side (view from above).



Plate 69.6: Omkāreśvara temple, *śikhara*, north-east corner.



Plate 69.7: Omkāreśvara temple, entrance to the sanctum.



Plate 69.8: Omkāreśvara temple, western *mukhamaṇḍapa*, view from north.



Plate 69.9: Omkāreśvara temple, northern *mukhamaṇḍapa*, view from west.



Plate 69.10: Omkāreśvara temple, upper storey, ca. 1893 (COUSENS No. 1389; by courtesy of the British Library, London).



Plate 69.11: Omkāreśvara temple, upper maṇḍapa in present condition.



Plate 69.12: Omkāreśvara temple, first floor, maṇḍapa with entrance to the Mahākāleśvara shrine.



Plate 70.1: Dvārkaḍhīś, Rāṇḥoṛ temple, general view from west (with Oṃkāreśvara temple on the right side).



Plate 70.2: Dvārkaḍhīś Rāṇḥoṛ temple, *garbhagrha* doorframe.



Plate 70.3: Dvārkaḍhīś Rāṇḥoṛ temple, *garbhagrha*, sculpture of standing Viṣṇu.



Plate 71.1: The 'Old mahal' ruin, general view from north-west.



Plate 71.2: 'Old mahal', general view, west side.



Plate 71.3: 'Old mahal', general view from south-west.



Plate 71.4: 'Old mahal', staircase on the north side, with Rājmaḥal to the right.



Plate 71.5: "Old mahal", brick entrance inside the northern stone wall.



Plate 71.6.: Śiva statue at extreme western end of the northern wall of the 'Old mahal'.



Plate 71.7: 'Old mahal', shrine in the western wall, view from west.



Plate 71.8: 'Old mahal', shrine standing within the western wall, view from south.



Plate 71.9: 'Old mahal', shrine standing within the western wall, detail of Viṣṇu sculpture and *lalāṭabimba*.



Plate 71.10: 'Old mahal', look inside the entrance to the large pillared hall.



Plate 71.11: 'Old mahal' look into the large pillared hall with debris.



Plate 71.12: The same as Plate 71.11, but digitally overexposed to illustrate the dimension of the hall.

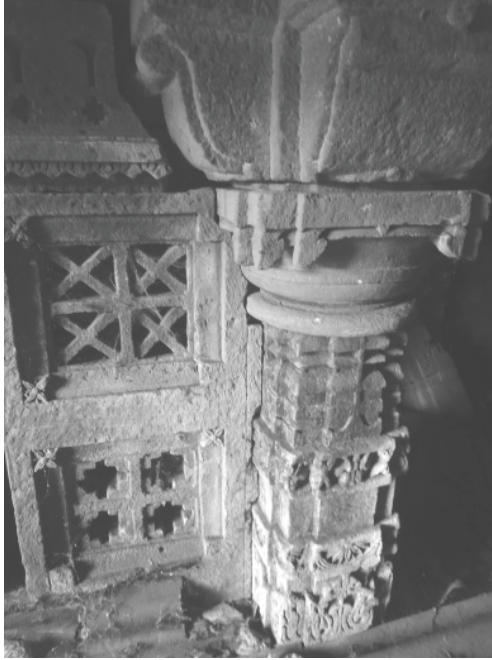


Plate 71.13: Detail of a pillar and a stone screen.



Plate 72.1: Rājmaḥal with adjacent *cūnāgarḥ* (left), general view from south.

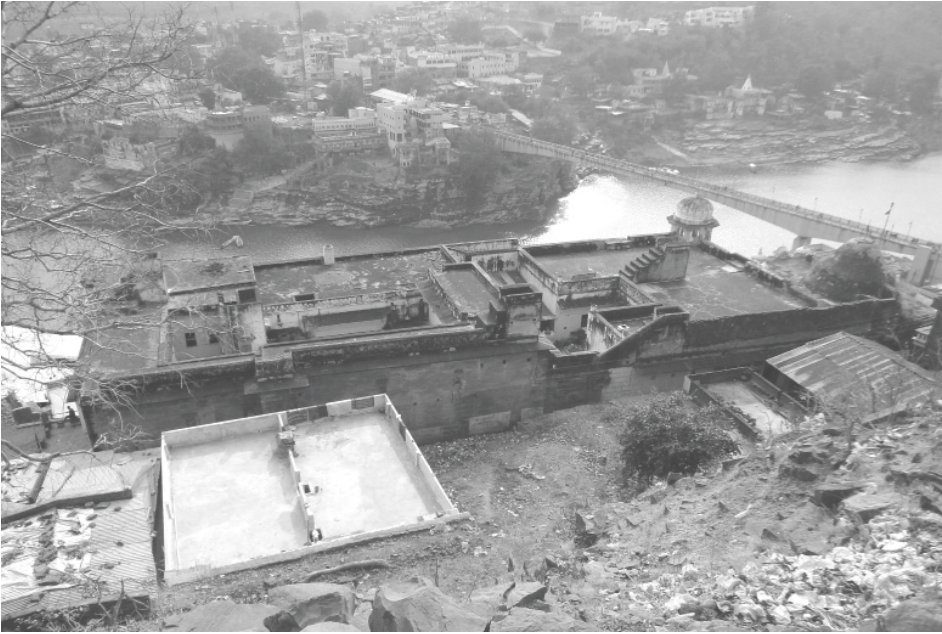


Plate 72.2: Rājmaḥal, view from top showing the structure of the building, view from the north.



Plate 72.3: Rājmaḥal, spolia in the north wall.



Plate 72.4: Rājmaḥal, main entrance.



Plate 72.5: Rājmaḥal, north wall, hero stone, east face.



Plate 72.6: Rājmaḥal, north wall, hero stone, north face.



Plate 72.7: Rājmaḥal, north wall, hero stone, inscribed west face.



Plate 73.1: Ruined temple in front of south wall of Rājmaḥal, general view from south-east.



Plate 73.2: Entrance and front of the *mukhamaṇḍapa*.



Plate 73.3: Entrance and *mukhamaṇḍapa* seen from the inside of the temple.



Plate 73.4: Doorframe of the *garbhagrha*, south side.



Plate 73.5: Doorframe of the *garbhagrha*, north side.



Plate 73.6: Lintel with *lalātabimba* showing Gaṇeśa.



Plate 73.7: Mutilated sculpture of a male deity in the *garbhagṛha*.

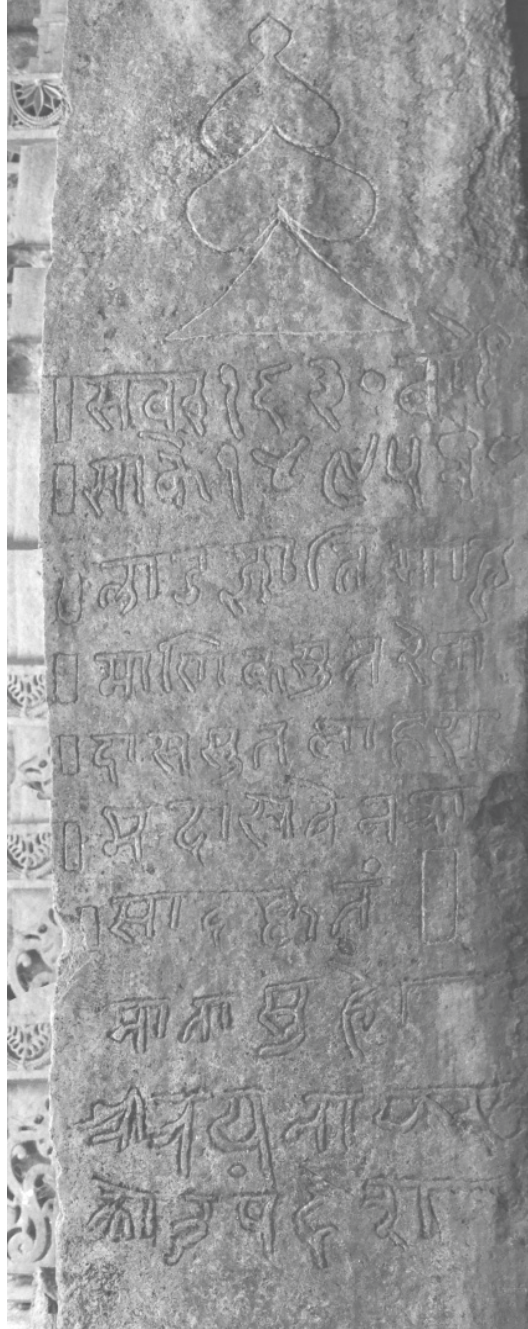


Plate 73.8: Inscription on the inner face of the doorframe of the *garbhagṛha*.



Plate 74.1: Śiva shrine, north side of the Oṃkāreśvara *bāzār*, general view from north-east (with the superstructure of the Rāv family's *samādhi* in the background).



Plate 74.2: Śiva shrine, view from south-east.



Plate 74.3: Śiva shrine, detail of doorframe.



Plate 74.4: Śiva shrine, *garbhagrha* with *sivalinga* and a niche in the back wall.



Plate 75.1: Śivpurī, south-western edge, shrine No.1 seen from a distance from north-west. (Shrine No. 2 stands immediately behind No. 1, but is concealed by the tree.)



Plate 75.2: Shrine No.1, north side.



Plate 75.3: Shrine No. 1, *garbhagṛha* with doorframe.



Plate 75.4: Shrine No. 1, emaciated goddess holding *triśūla* and *khaṭvāṅga*.



Plate 76.1: Shrine No. 2, front, view from north-east.



Plate 76.2: Shrine No. 2, front wall with entrance to *garbhagrha* and sculpture of Gaṇeśa.



Plate 76.3: Shrine No. 2, *garbhagrha*, sculpture on the rear wall.



Plate 77: The *samādhi* of the Rāv family, view from south-west.



Plate 78.1: The Hāthikhānā, general view from west.



Plate 78.2: The Hāthikhānā, entrance at the east side.



Plate 78.3: The Hāthikhānā, view of the inside from the east.



Plate 78.4: The Hāthikhānā (background) and remains of an adjacent structure, distant view from the east.



Plate 79.1: The Caubīs Avatār temple at its original location in 1893–94, view from east (COUSENS No. 1395, by courtesy of the British Library, London).



Plate 79.2: The Caubīs Avatār temple, at its new location, view from east.



Plate 79.3: Caubis Avatār temple, 'split' pillars in balustrade of verandah.



Plate 79.4: Caubis Avatār temple, entrance to the main hall.



Plate 79.5: Caubis Avatār temple, probably misplaced doorsill in front of the building.

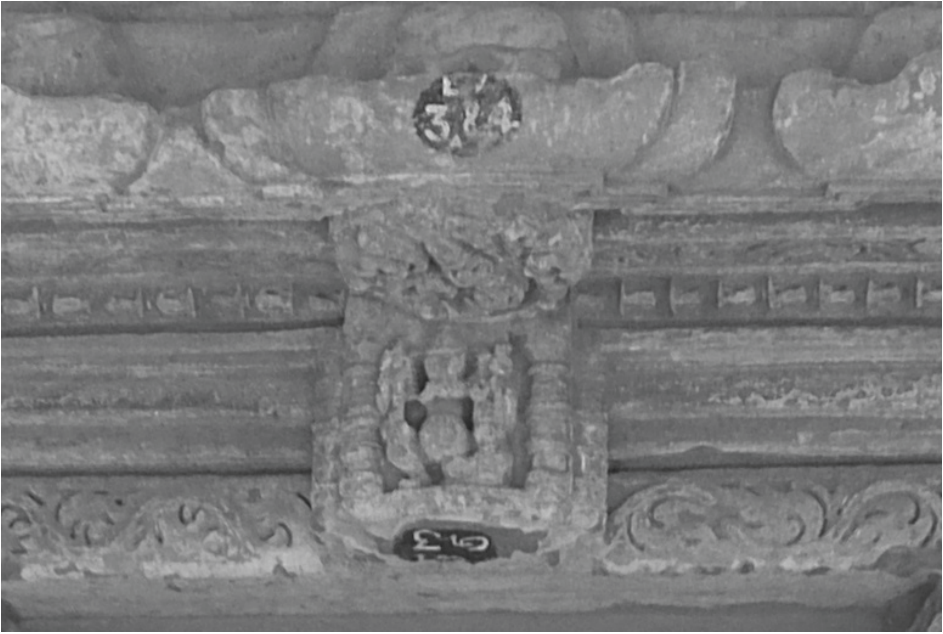


Plate 79.6: Caubīs Avatār temple, entrance to the main hall, *lalāṭabimba* with figure of Gaṇeśa.



Plate 79.7: Caubīs Avatār temple, main hall.



Plate 79.8: Caubīs Avatār temple, mouldings on the south wall.



Plate 79.9: Caubīs Avatār temple, rear side, view from south-west.



Plate 80.1: Sarasvatī temple, star-shaped base, view from north-east.



Plate 80.2: Sarasvatī temple, sanctum with entrance opening to the west.



Plate 81.1: Loose sculptures at the eastern side of the ASI compound at Panthiā.



Plate 81.2: Loose architectural fragments at the eastern side of the ASI compound at Panthiā.



Plate 82.1: Śiva and Paśupatinātha temples at their relocation site, view from north-west.



Plate 82.2: Śiva temple, north side.



Plate 82.3: Śiva temple, east side.



Plate 82.4: Śiva temple, south side.



Plate 82.5: Śiva temple, west side, entrance to *garbhagrha* .



Plate 82.6: Śiva temple, *garbhagrha*.



Plate 83.1: Paśupatinātha temple, east side with main entrance.



Plate 83.2: Paśupatinātha temple, south-eastern corner with side entrance.



Plate 83.3: Paśupatinātha temple, door-frame of the *garbhagrha*.



Plate 83.4: Paśupatinātha temple, old fragments in a modern wall.



Plate 83.5: Paśupatinātha temple, *garbhagrha*.



Plate 84.1: Statue of 'Mahākālī' at its original location in November, 1893. (COUSENS No. 1396, by courtesy of the British Library, London).



Plate 84.2: Broken statue of 'Mahākālī', view from the east.



Plate 84.3: 'Mahākālī', head and chest.



Plate 84.4: 'Mahākālī', abdomen with lower hands to either side.



Plate 84.5: 'Mahākālī', thighs.



Plate 84.6: 'Mahākālī', feet with attendant figures.



Plate 85.1: Siddhvarḱuṭ Jain monastery, general view from south.



Plate 85.2: Photo No. 4426 of the Frith series, probably depicting now non-extant ruins of the former Jain monastery at Siddhvarḱuṭ. (By courtesy of the Victoria and Albert Museum, London).



Plate 86.1: Architectural fragments at the south-western corner of an old pond.



Plate 86.2: Detail of an architectural fragment at the same place.



Plate 87: Remains of an old fortification wall at the northern slope of Gayāśilā.



Plate 88.1: Gayāśilāmaṭh, general view from the south.



Plate 88.2: Gayāśilāmaṭh, general view from the south-east.



Plate 88.3: Gayāśilāmaṭh, collapsed part at the eastern side of the extant hall.



Plate 88.4: Gayāśilāmaṭh, view from the south with remains of a large platform in the foreground.



Plate 88.5: Gayāśilāmaṭh, loose architectural fragments strewn all over the site.



Plate 88.6: Gayāśilāmaṭh, front wall of the extant hall, view from south-east.



Plate 88.7: Gayāśilāmaṭh, doorframe.



Plate 88.8: Gayāśilāmaṭh, lintel with figure of Gaṇeśa.



Plate 88.9: Gayāśilāmaṭh, inside of the hall, view from east.



Plate 89.1: Overgrown temple fragments, to the west of the Gayāśilāmaṭh.



Plate 89.2: Temple fragments including remains of a doorframe, to the west of the Gayāsilāmaṭh.



Plate 90.1: *Phaṃsanā* shrine, south-west of the Gayāsilāmaṭh, general view from south-west.



Plate 90.2: *Phamsanā* shrine, general view from north-west.



Plate 91.1: Loose sculpture of Viṣṇu with *avatāras*.



Plate 91.2: Loose sculpture of Gaṇeśa.



Plate 91.3: Loose female sculpture.



Plate 91.4: Loose *lingapīṭha*.



Plate 92.1: Old well near Pāṇḍukaśilā.



Plate 92.2: Staircase of the old well.



Plate 93.1: Koṭkherā, abandoned platform of Śiva temple on the south bank of the Narmadā.



Plate 93.2: Mātāghāṭ, relocated Cakkardevī temple, east face.



Plate 93.3: Mātāghāṭ, relocated Sātmātrā temple, west side.



Plate 93.4: Mātāghāṭ, relocated Sātmātrā temple, north side.



Plate 93.5: Mātāghāṭ, relocated Sātmātrā temple, pillars.



Plate 93.6: Mātāghāṭ, relocated remains of Śiva temple.



Plate 93.7: Statue of Bhairavanātha, Sātmātrā temple, east wall.



Plate 93.8: Statue of Kaumārī, Sātmātrā temple, east wall.



Plate 93.9: Statue of Varāhī, Sātmātrā temple, west wall.



Plate 93.10: Statue of Gaṇeśa, Sātmātrā temple, west wall.



Plate 93.11: Mātāghāt, statue of a male deity.

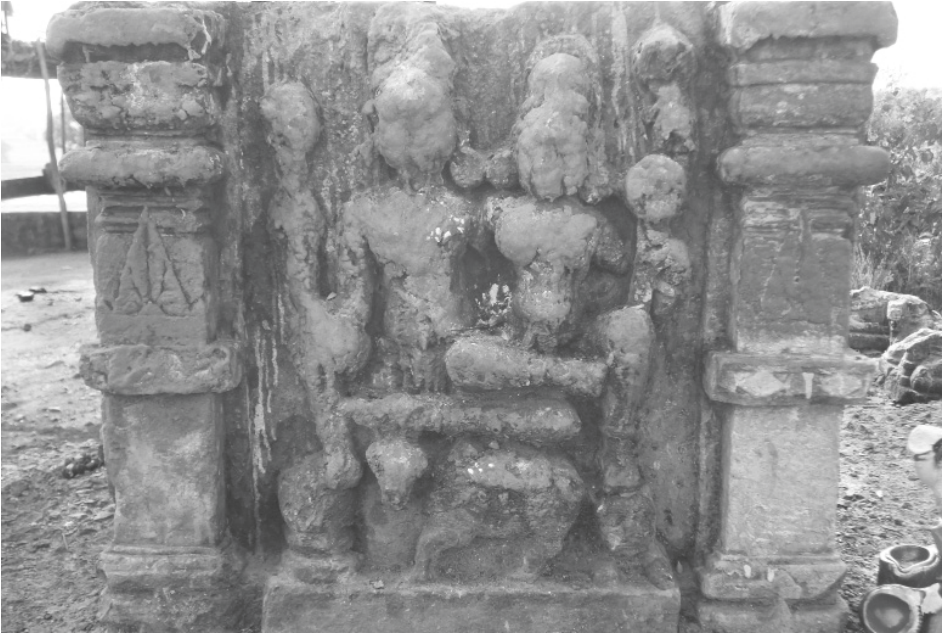


Plate 93.12: Mātāghāt, loose sculpture of Umāmaheśvara.