

# PLATES











141

189



146



182

190









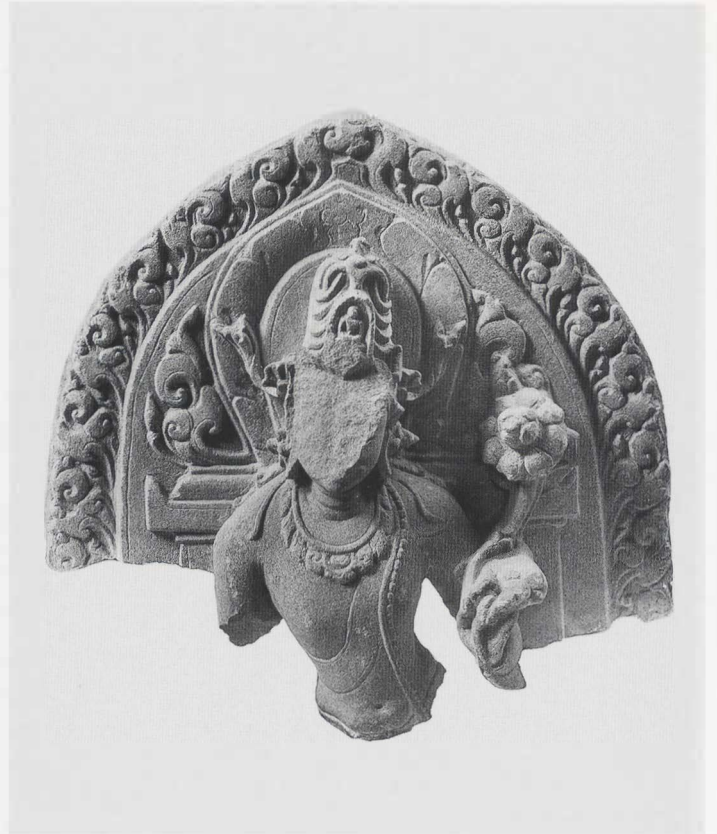
327

301







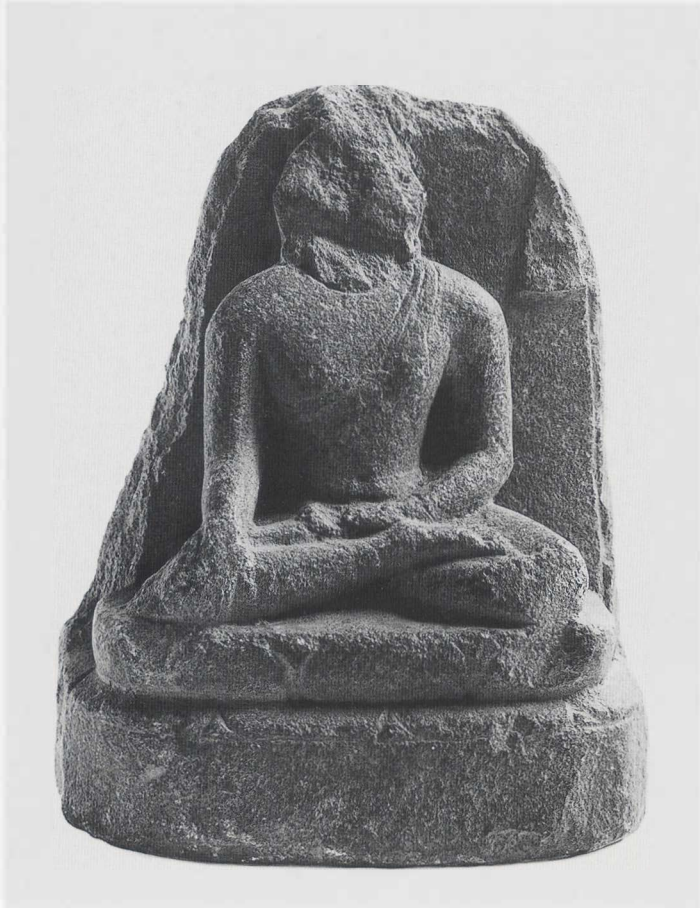


1

3

2

4





5



6

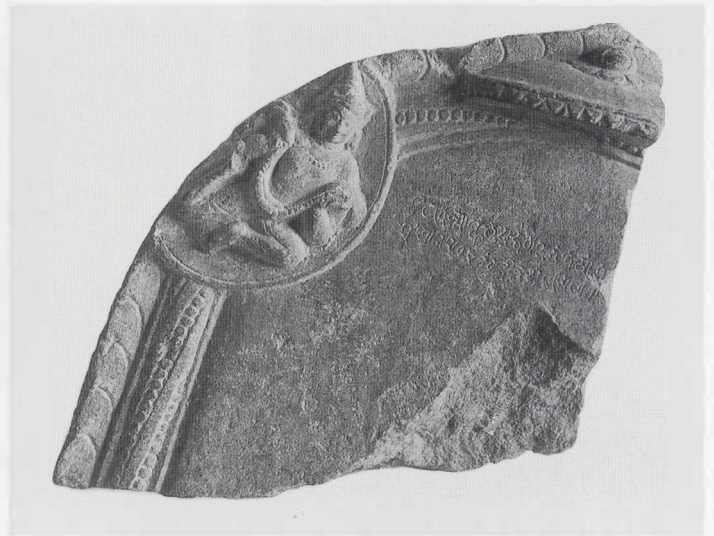
7



8

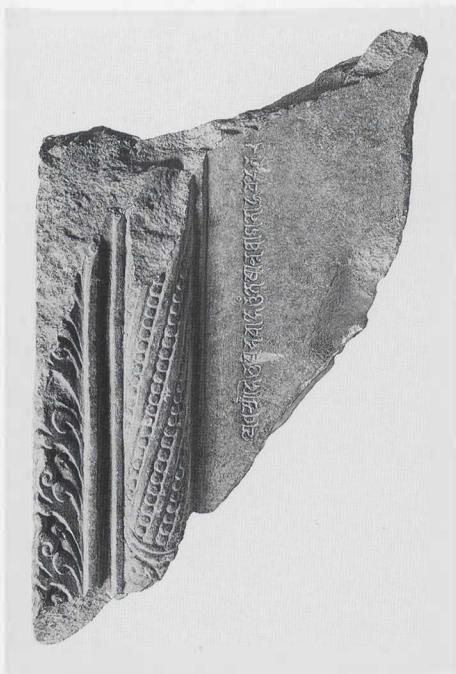


9





10



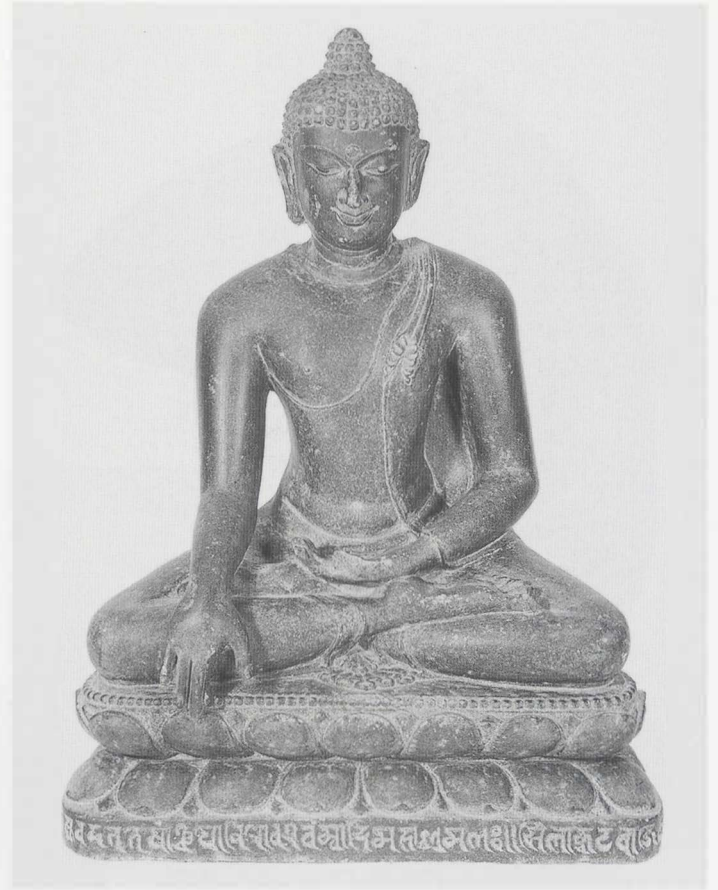
11

12

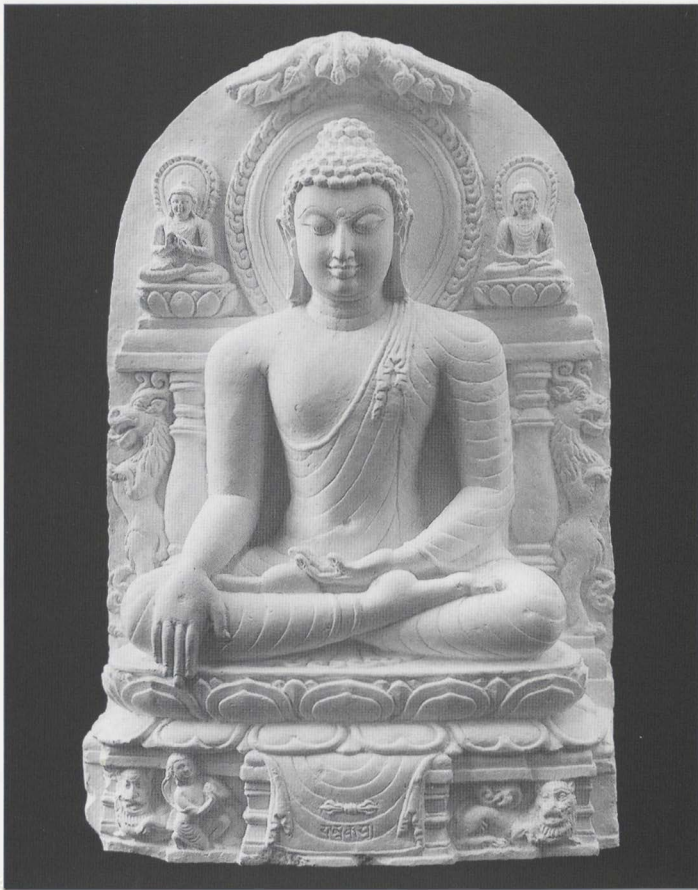




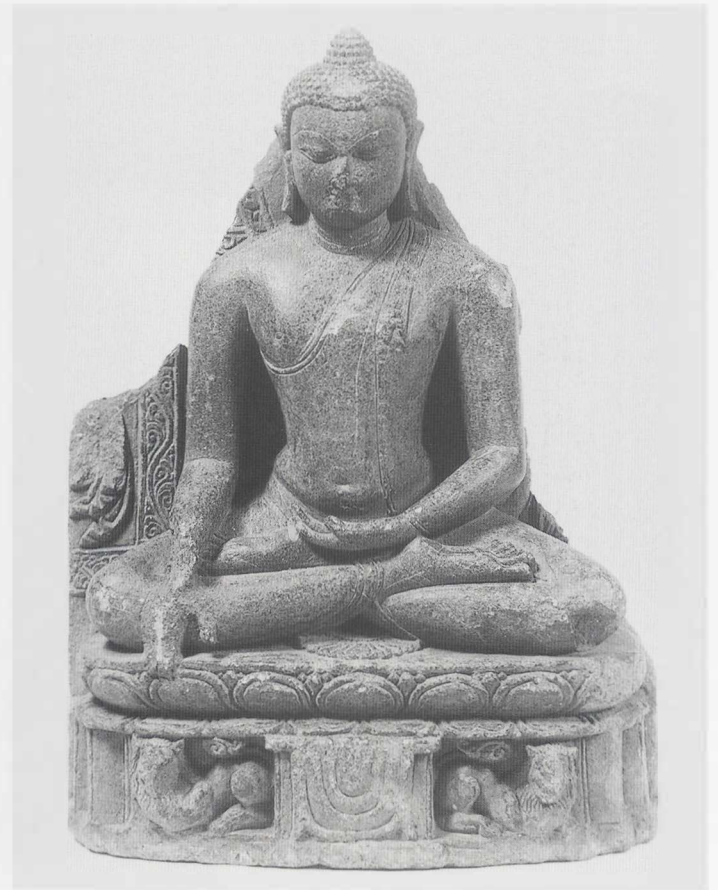
13



15



14



16





17



19

18

20





21

22



23



24



25



27



26



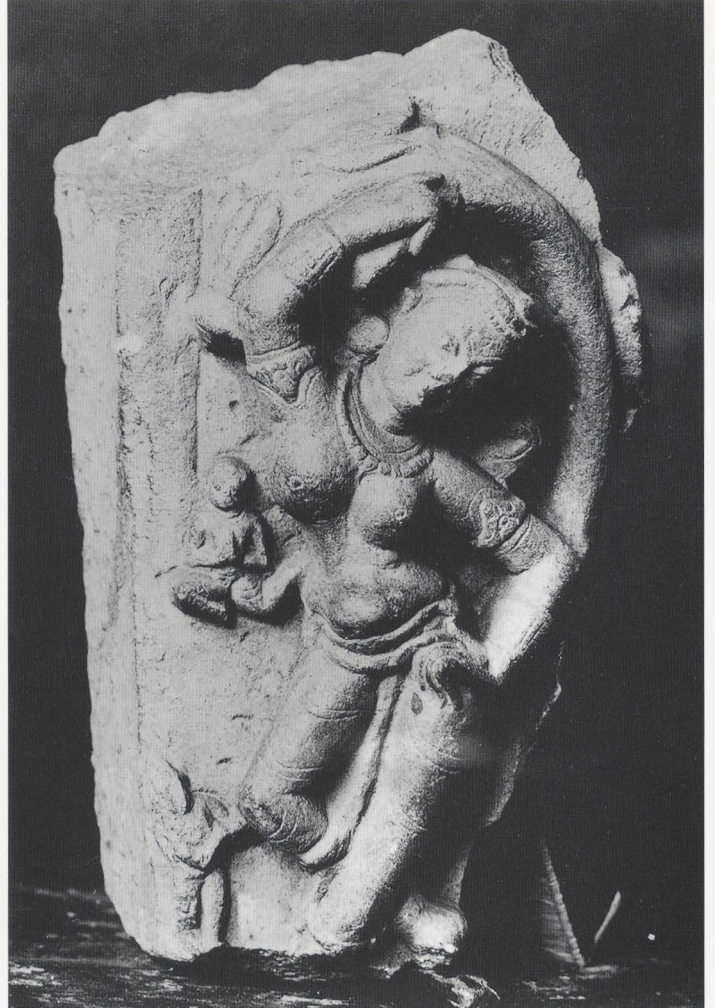
28



29



30



31

32





33

34



36

37



35





39



42



40



43

41





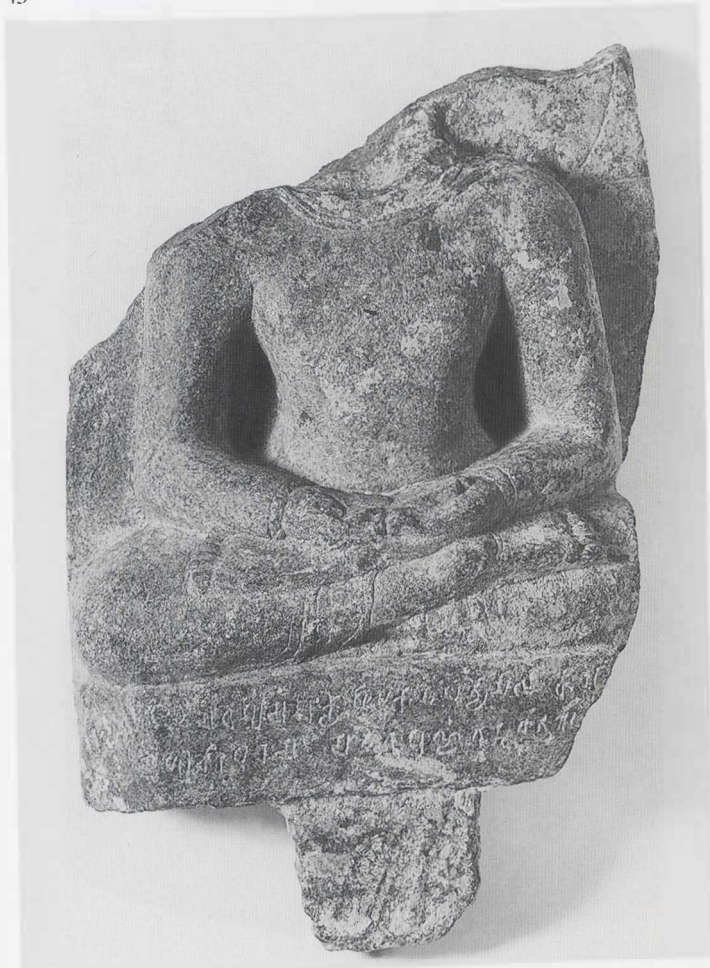


44



46

45



47

48





49

50



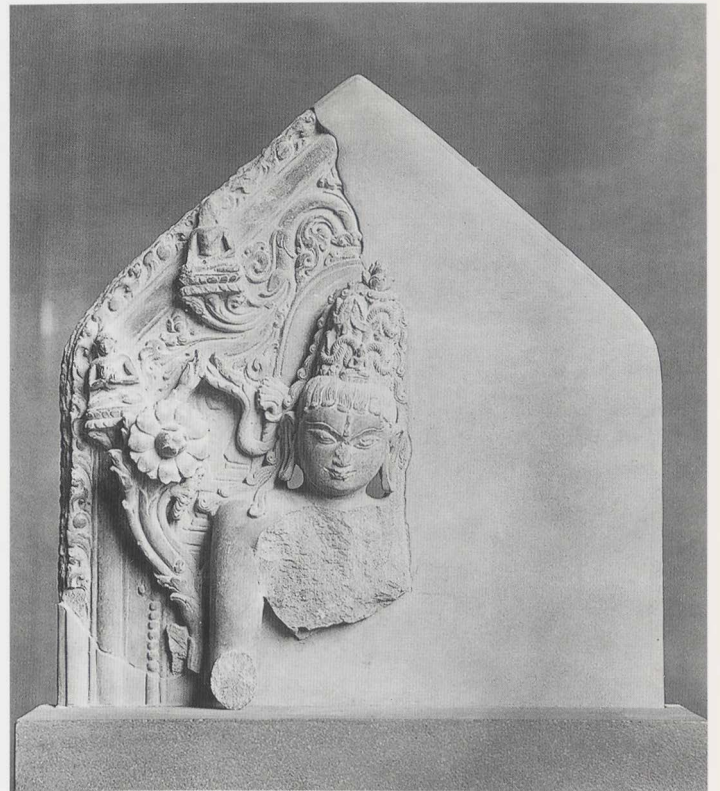


51



52

53





54



56



55



57



58

59





60



62



61



63



64



65



66



68



67





70



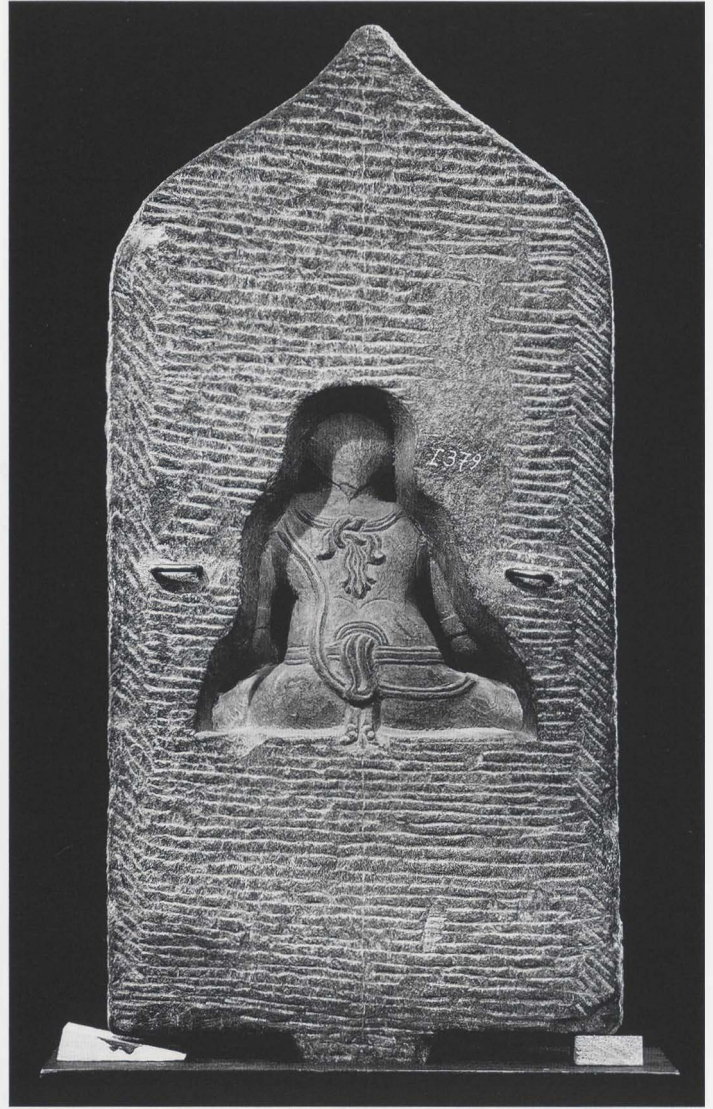
71



72



73a



73b



74

75





76



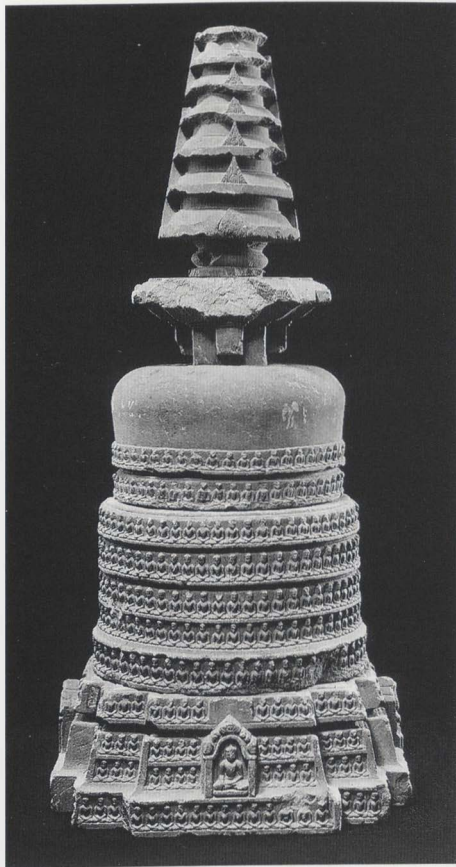
78



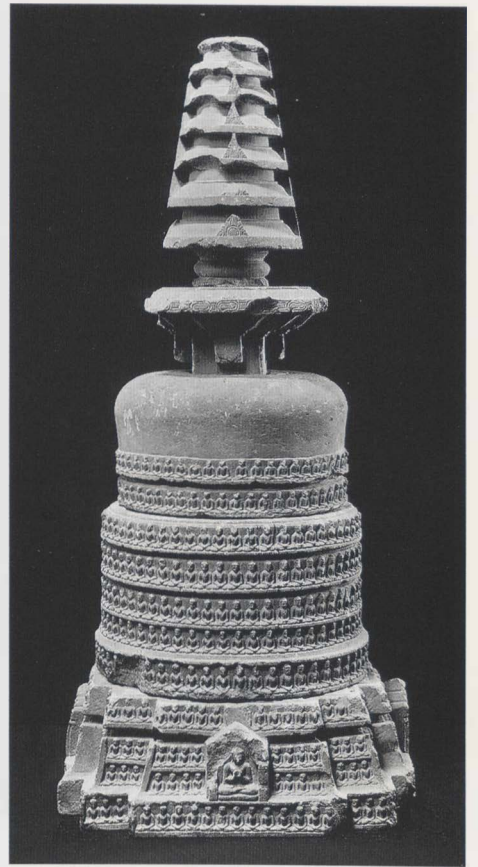
176



79

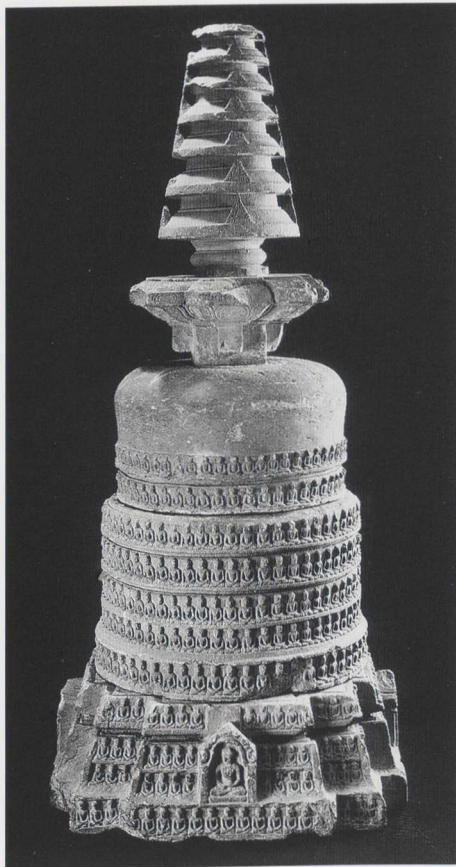


80a

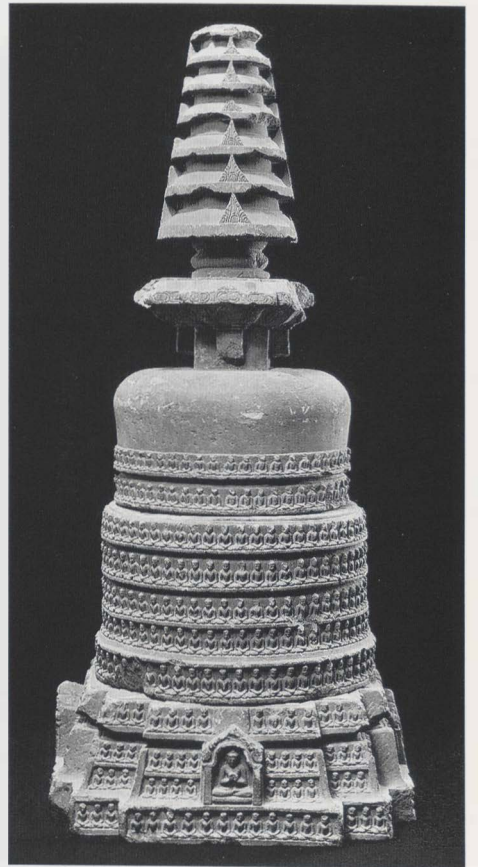


80b

80c



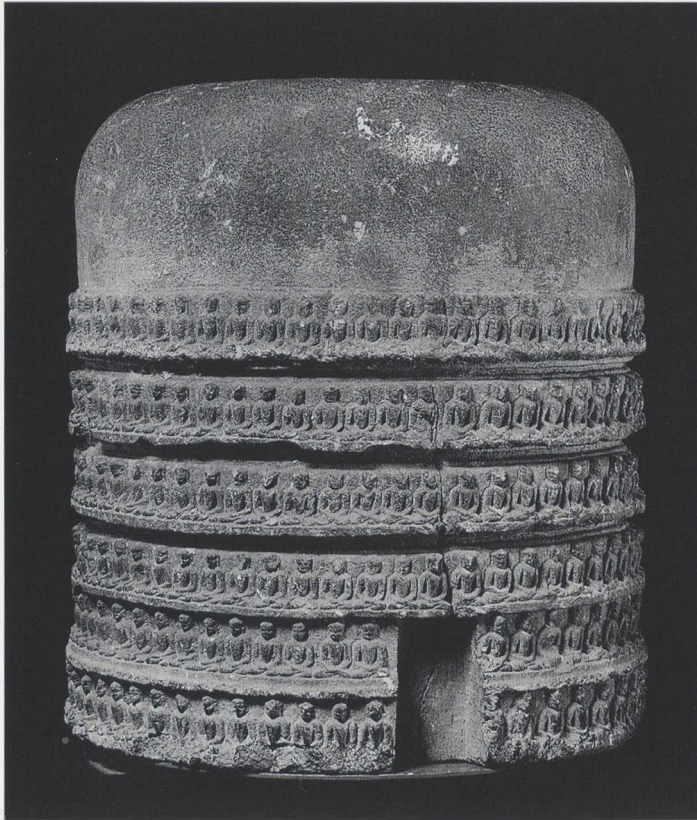
80d





81a

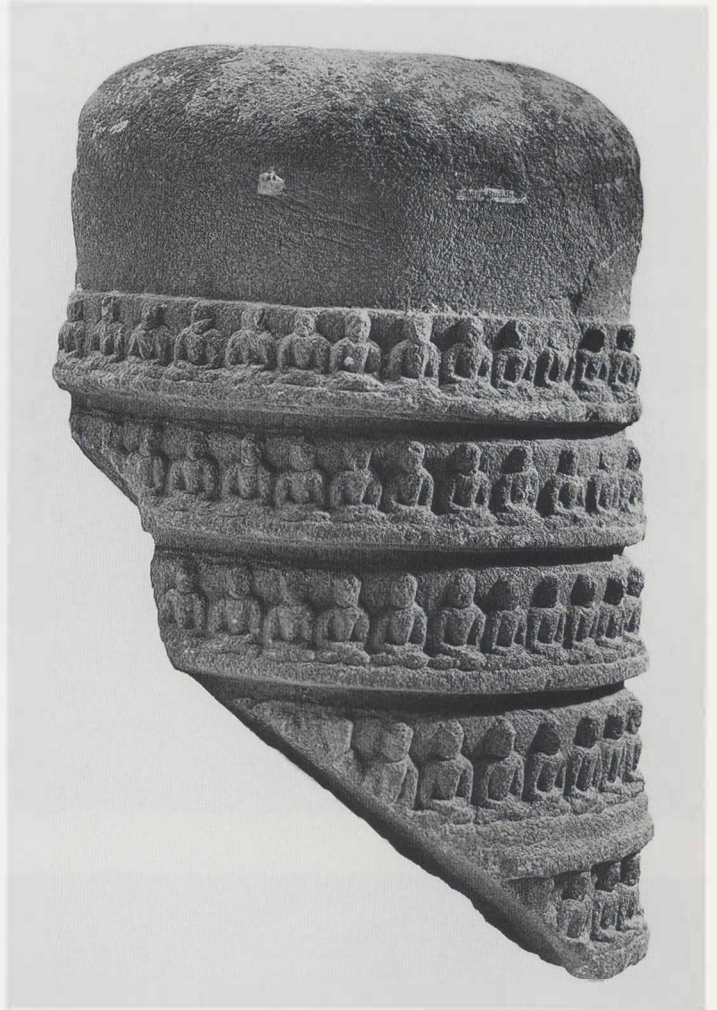
81b



82a (with 165)



82b



83

84





85



86a



86b

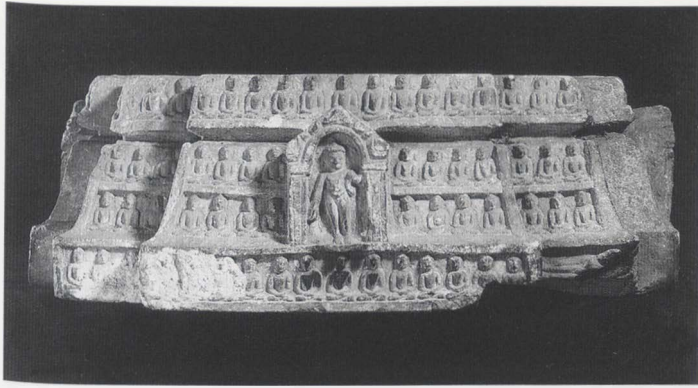


86c

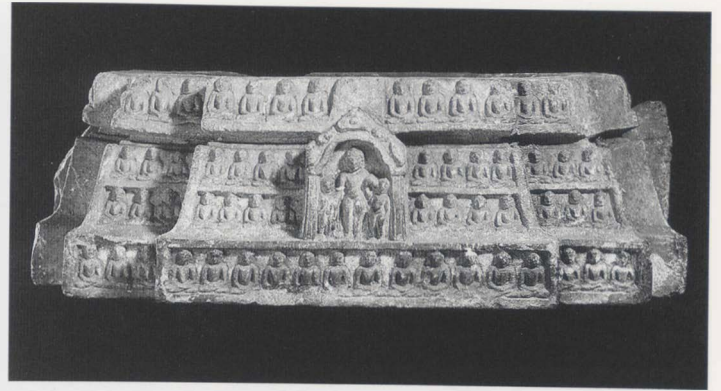


86d





87a



87b



87c



87d



88a



88b



88c



88d



89a



89b



89c



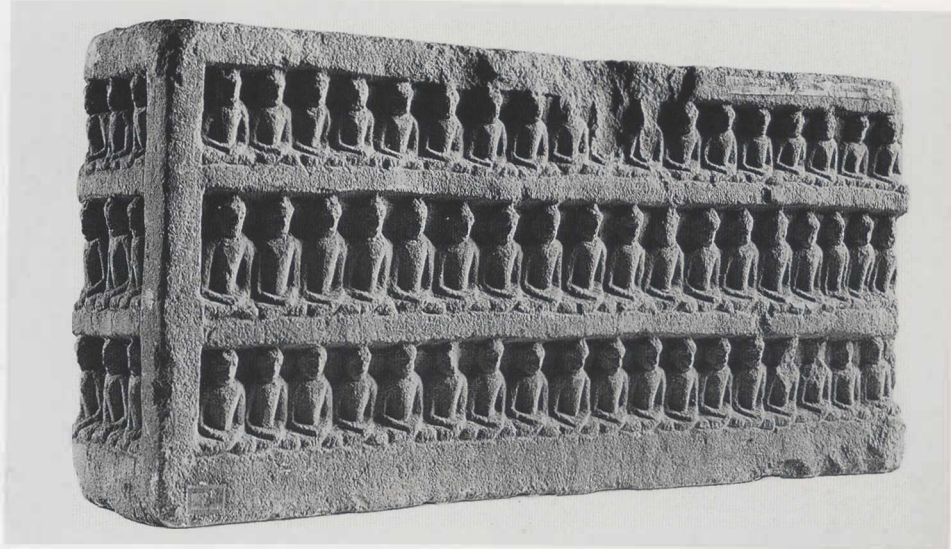
89d

90

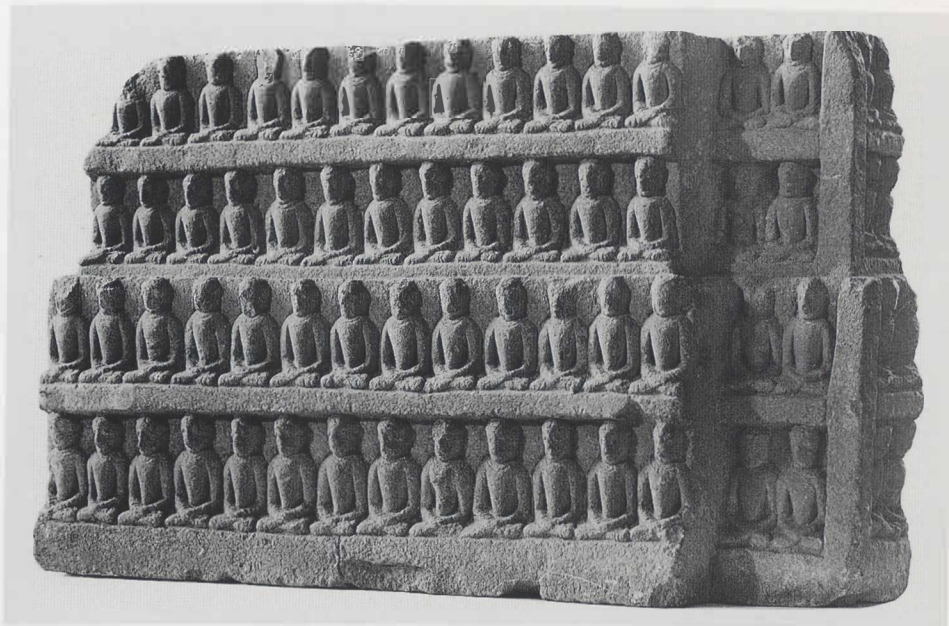


91



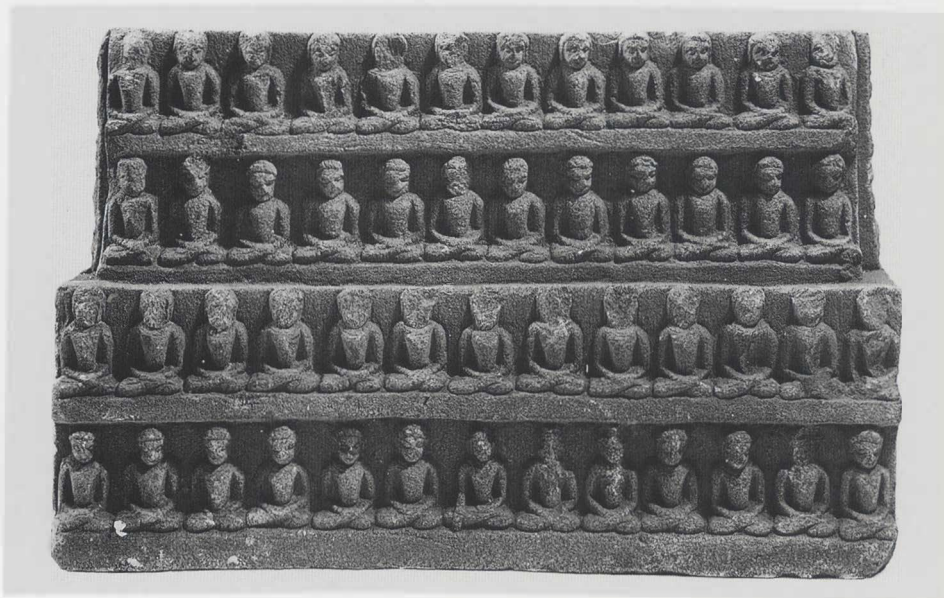


92



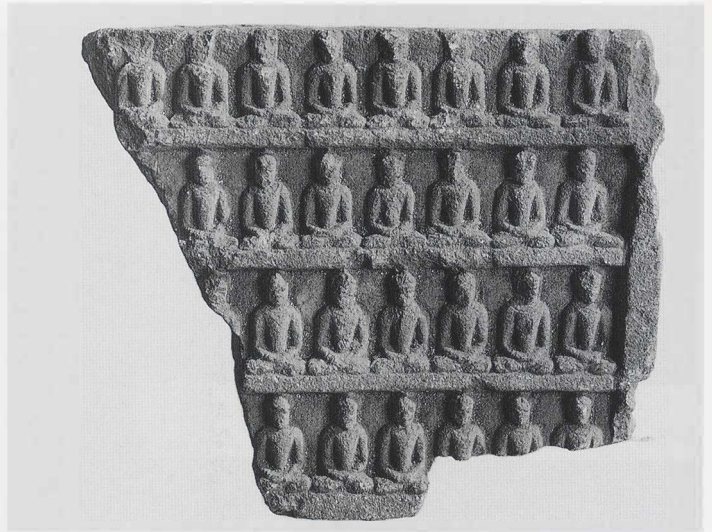
93

94

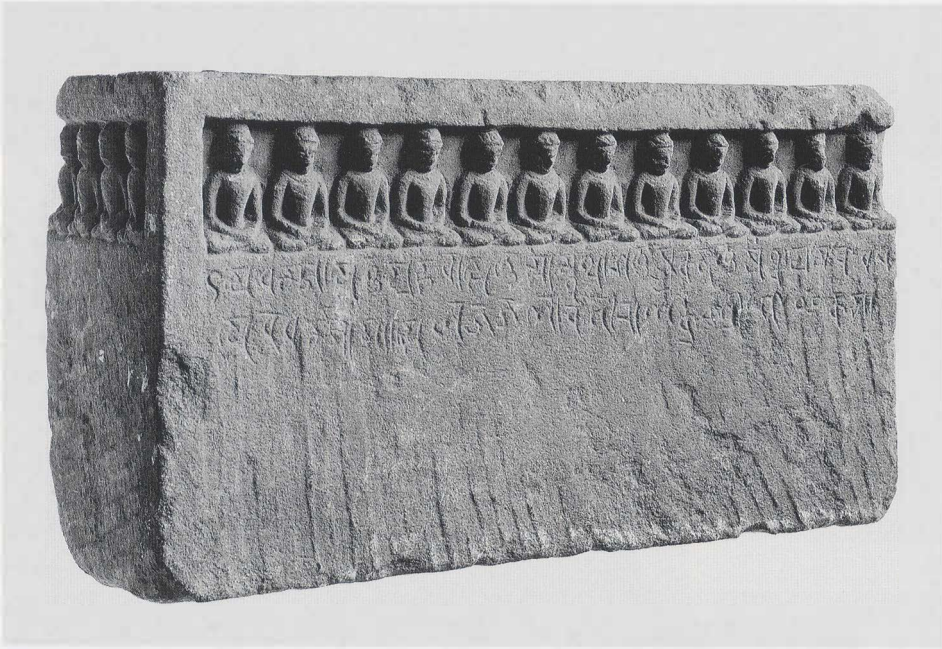




95



96



97

98



99



100





101a



101b

101c



101d

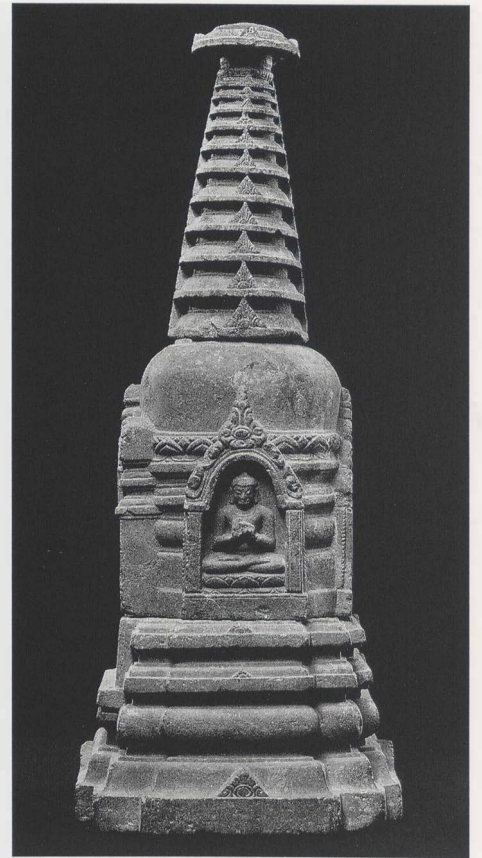




102

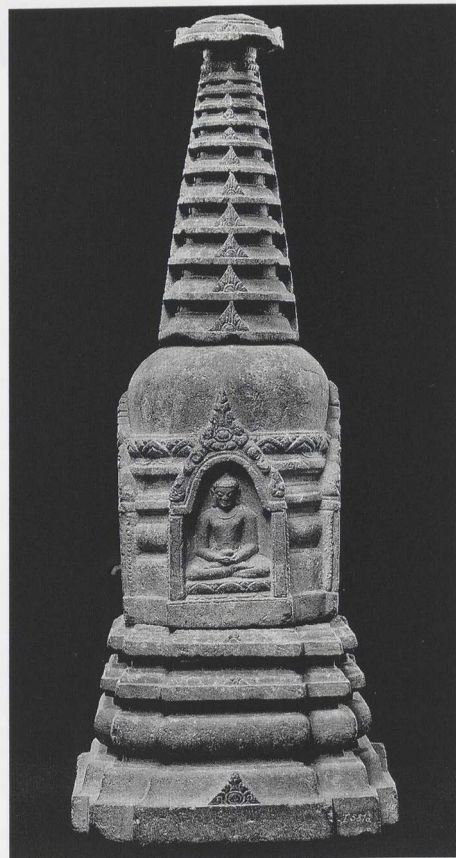


103a

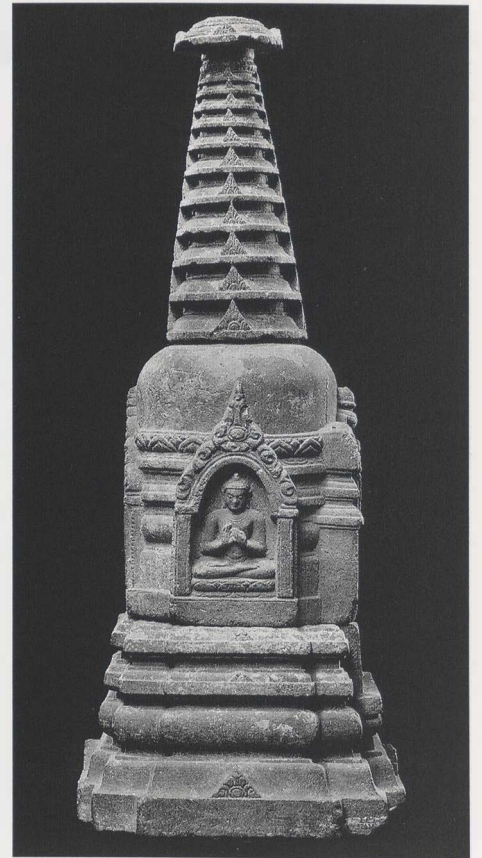


103b

103c



103d





104a



104b





105



106



107



108



109



110



111

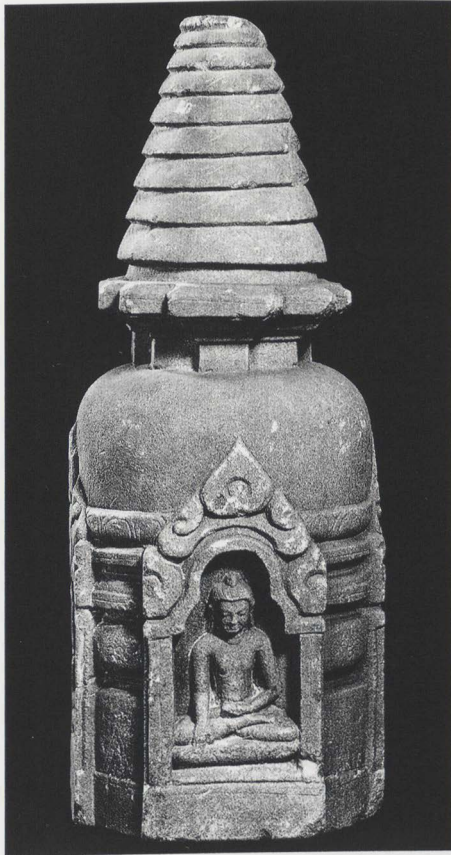


112

113



190

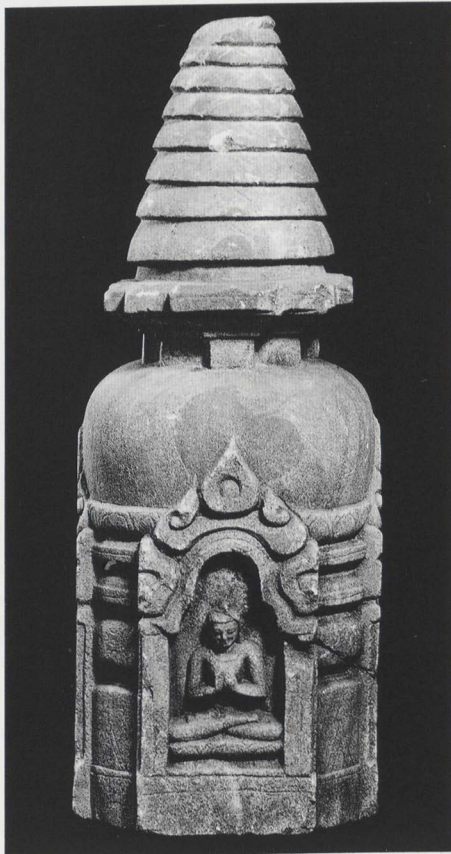


114a

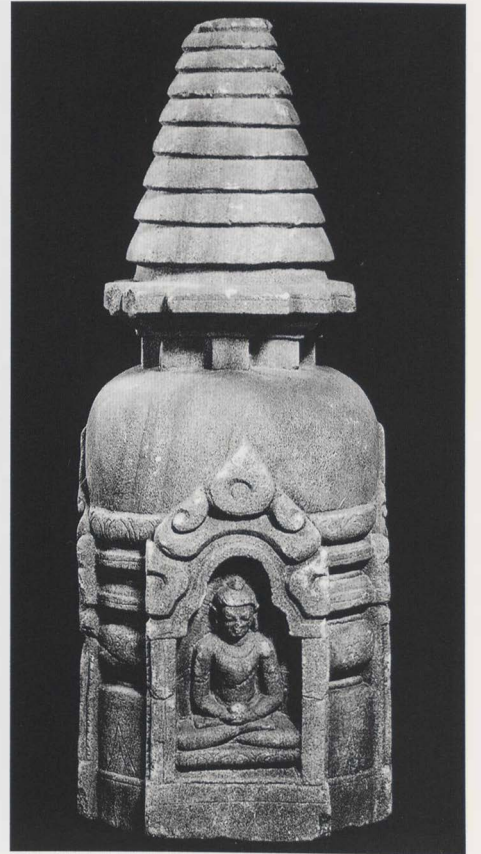


114b

114c



114d





115

116





117



118





119

120a





120b (with 166)

121



122



123







124



125

126

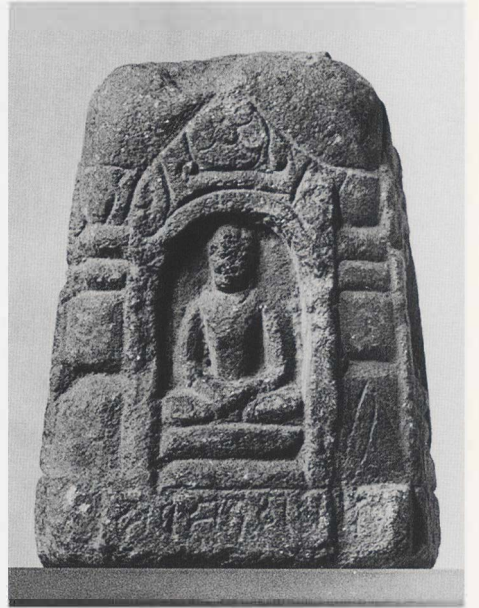


127





128



129

130

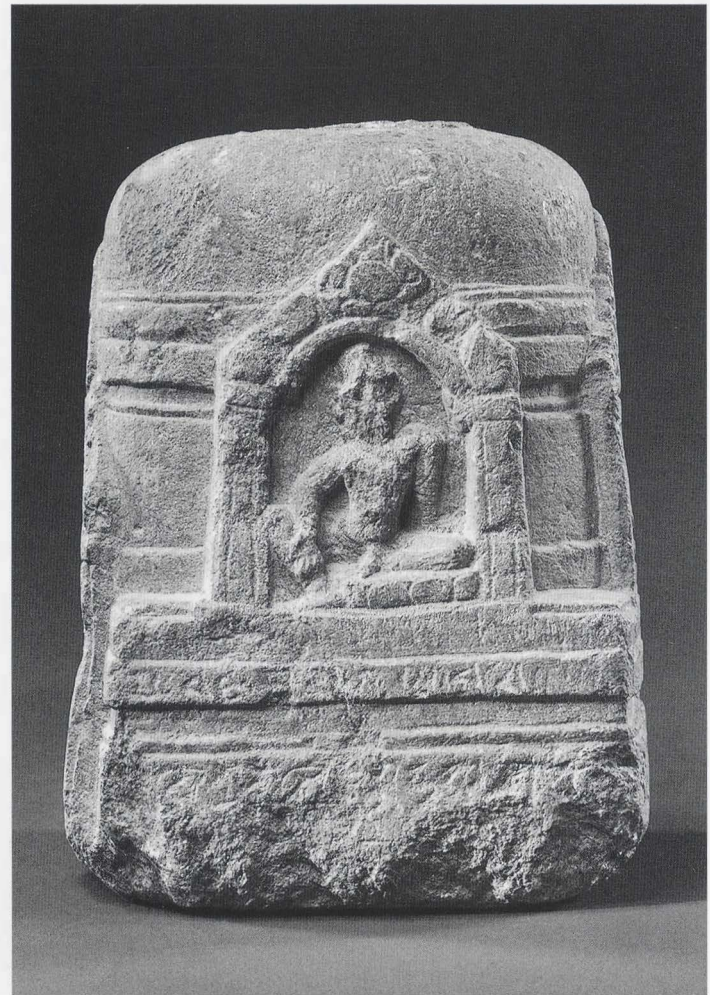




131a



131b



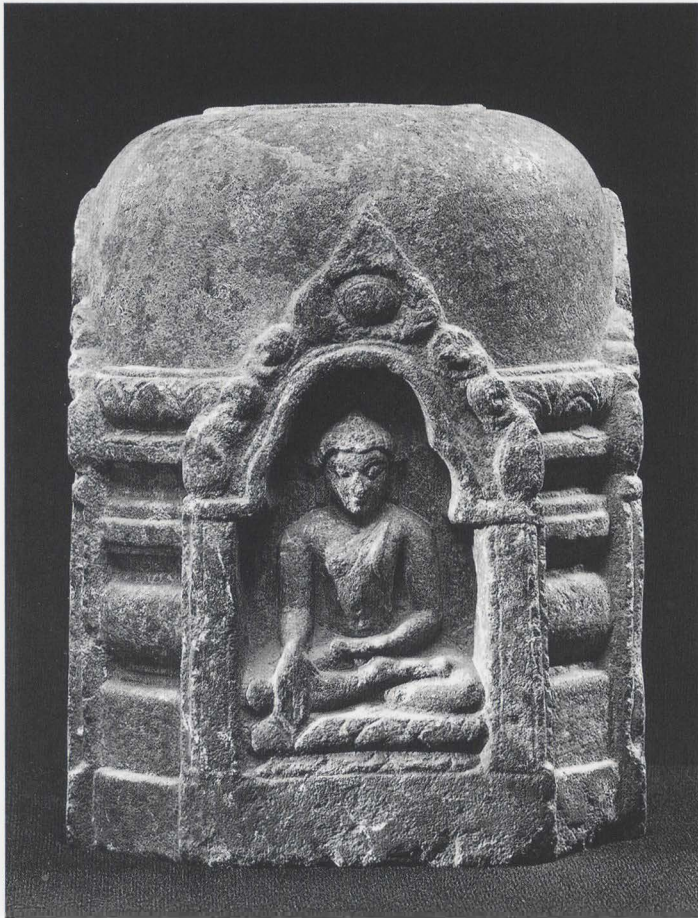


131c

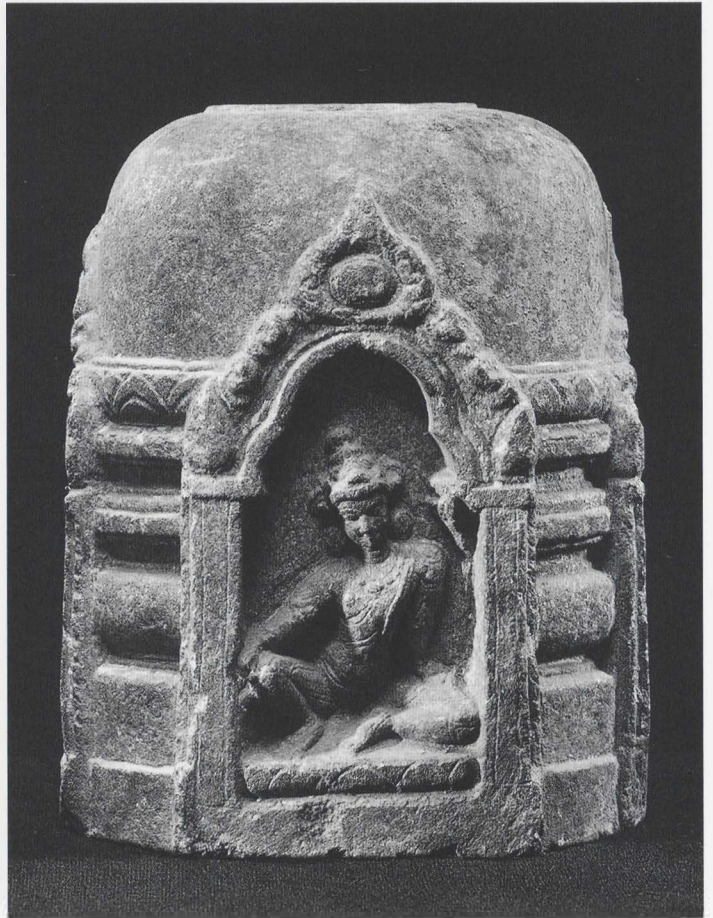


131d

132a

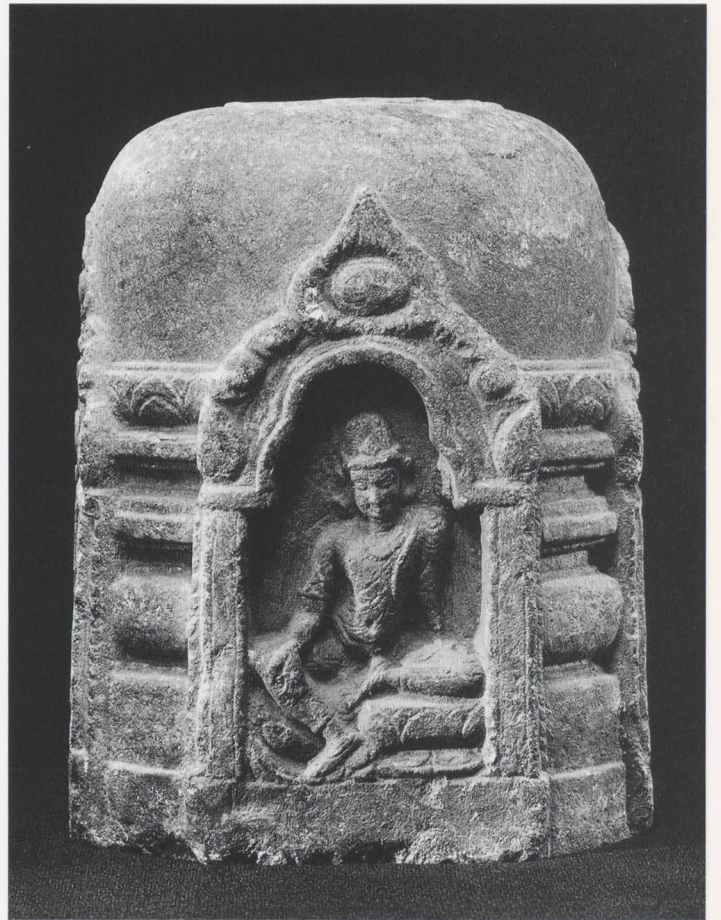


132b





132c



132d

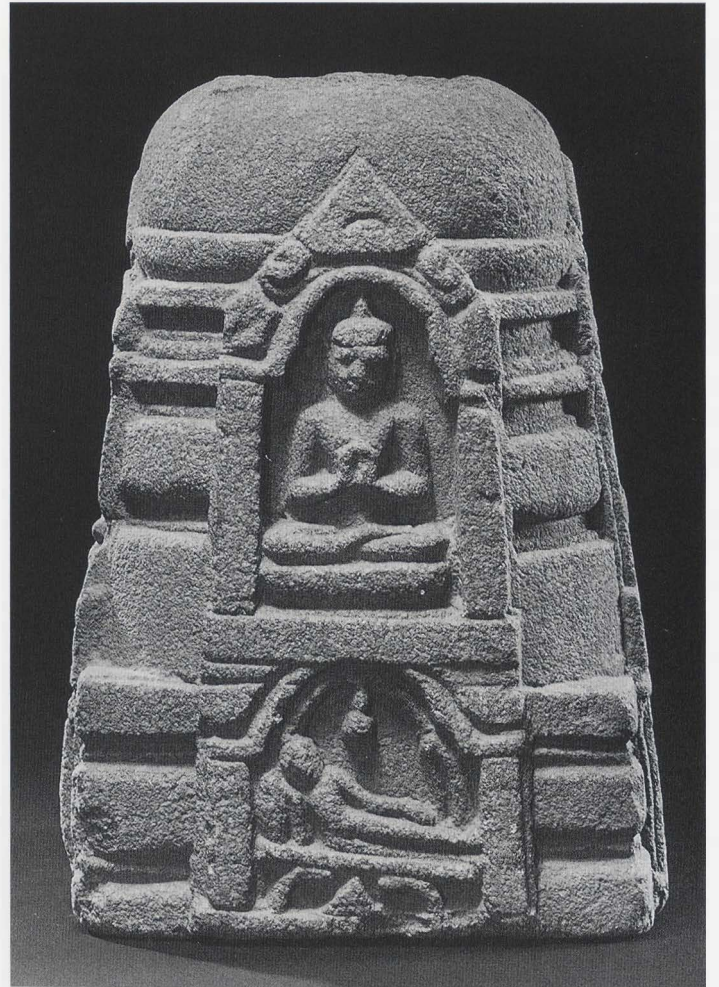


133

134a



134b



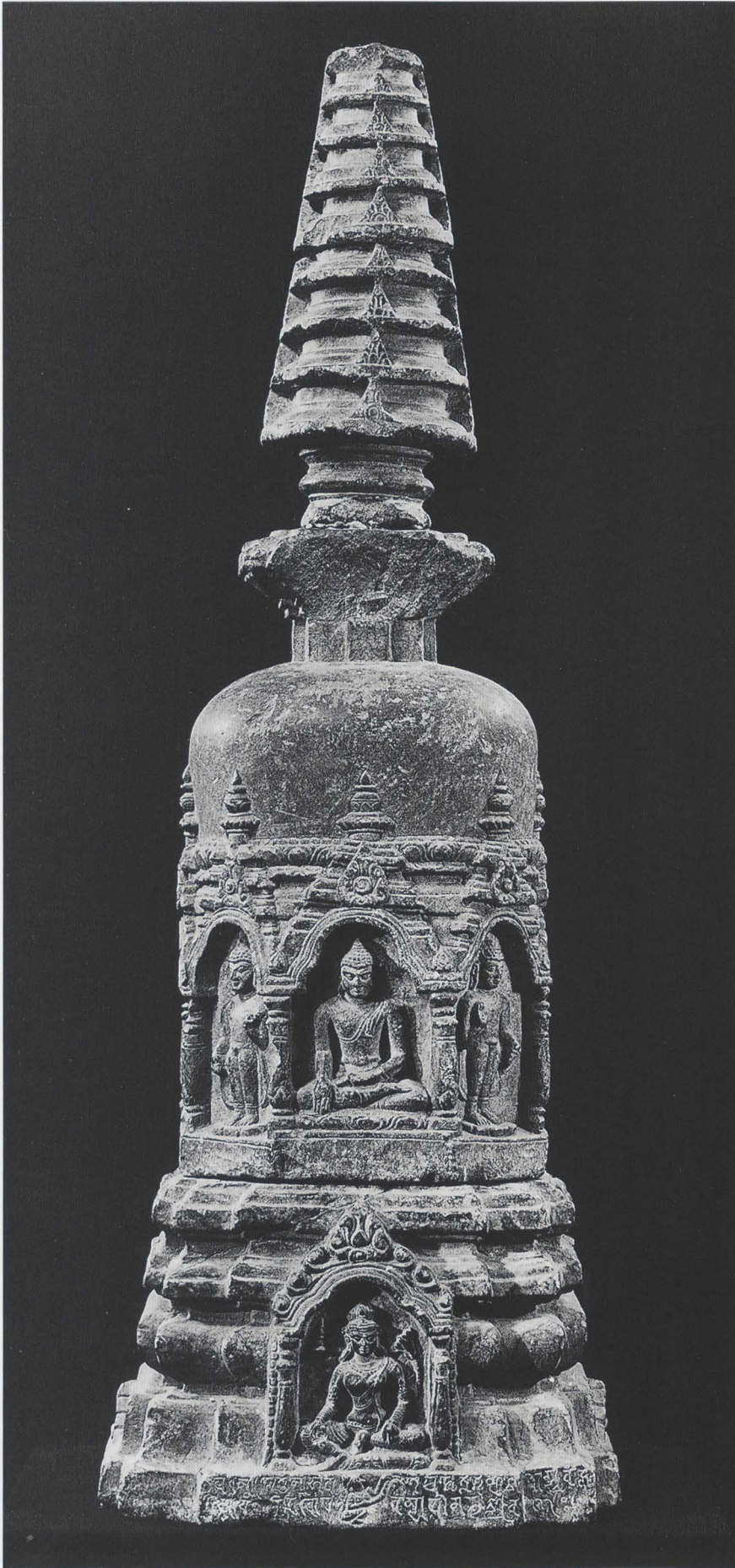




134c



134d



135a



135b



135c



135d



135e



136a



136b



136c



136d



136e



136f



137



139

138

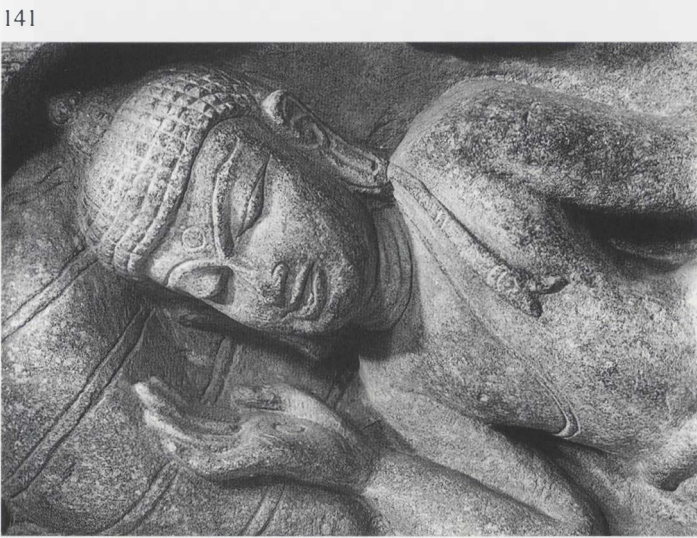


210





141



141



142

143





144



145

146



212





147

148





149



150

152

151



17. Eingang zu einer Capelle, mit nackter, weig. und vordringl. Ellen. Mauerstrich. Sch. in der gr. Weibst. angeheftet. From the Lycæus of the Flavian Colony. See, p. 171.



153



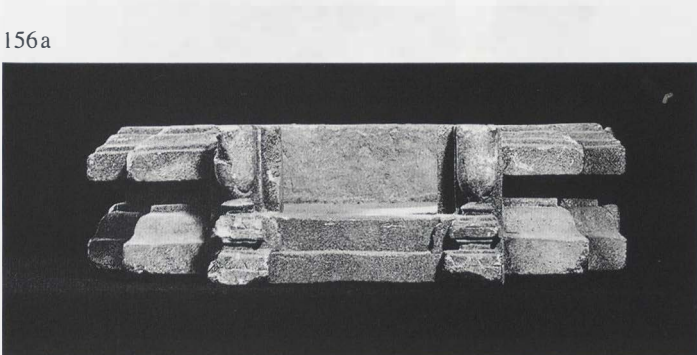
154



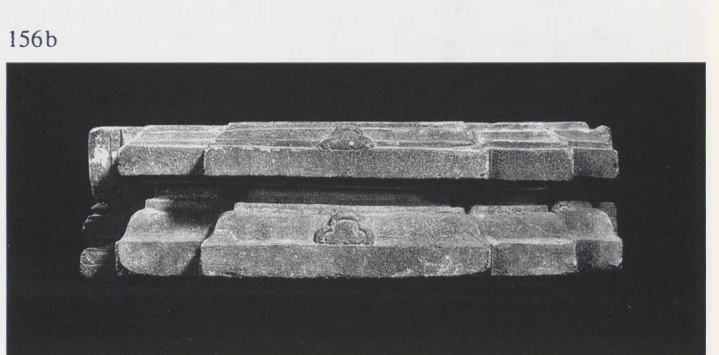
155a



155b



156a



156b



157



158



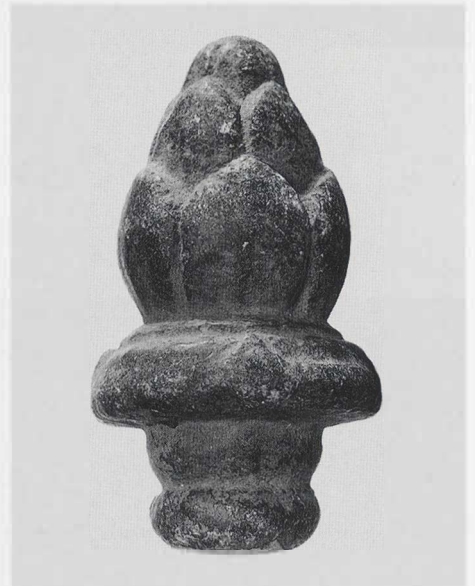
159

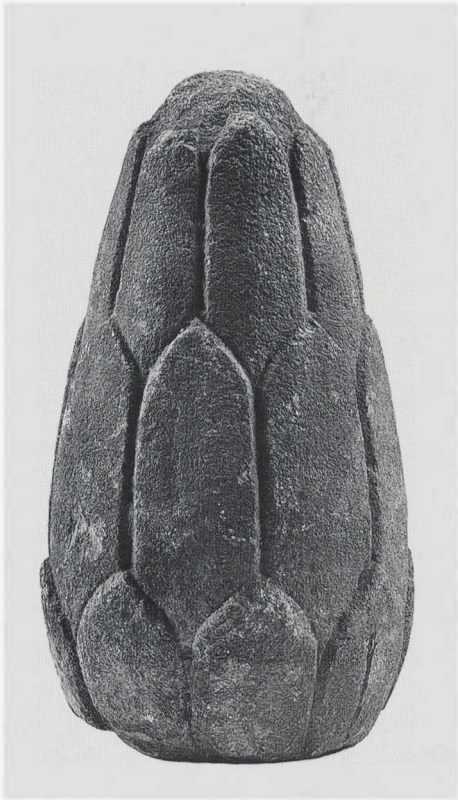
160

162



216

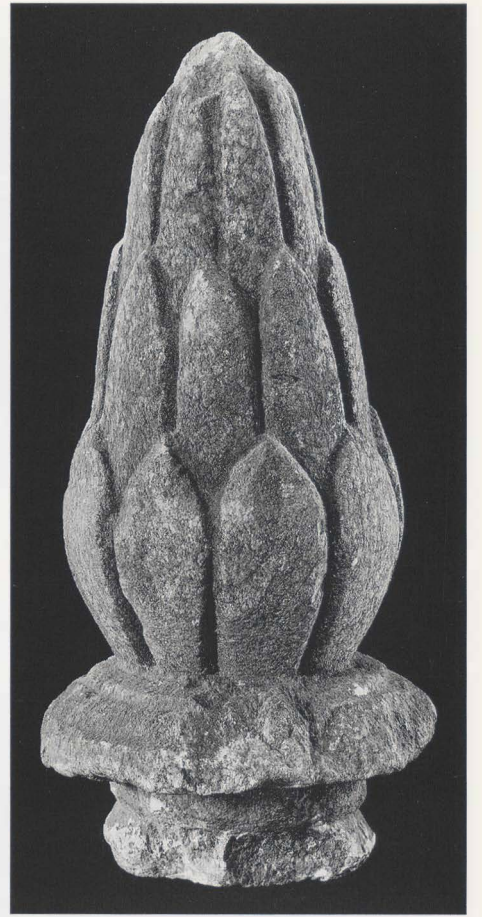




163



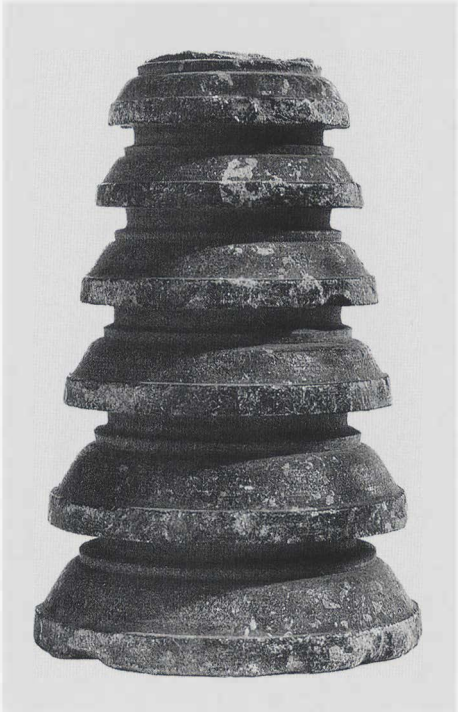
164



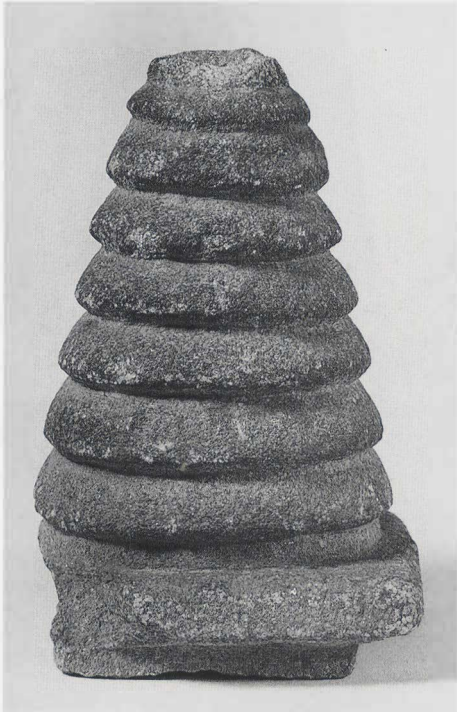
165

167

166

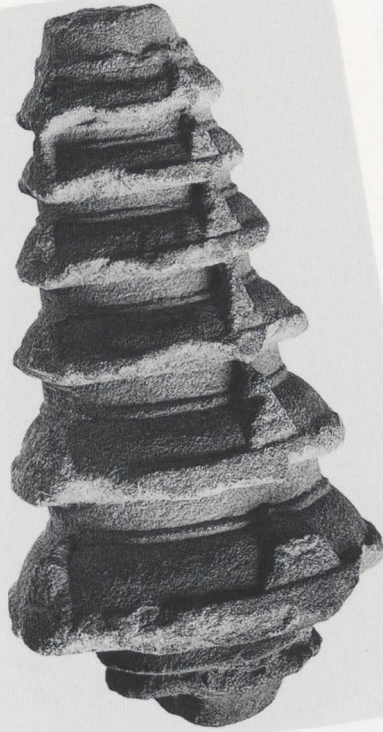


168





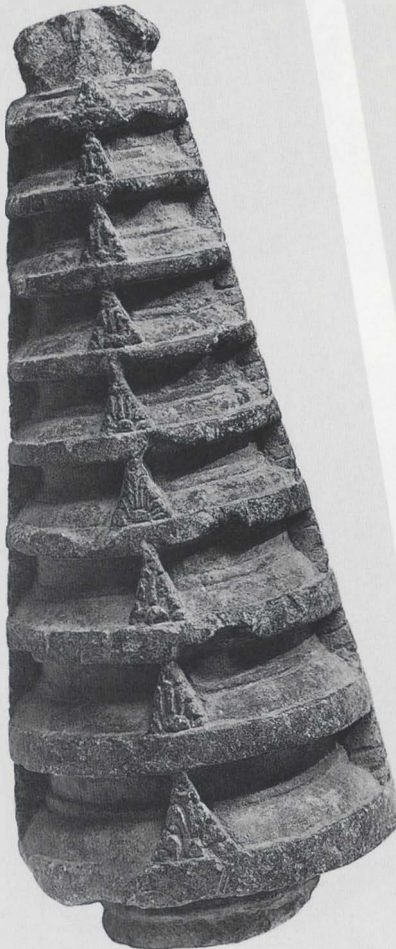
169



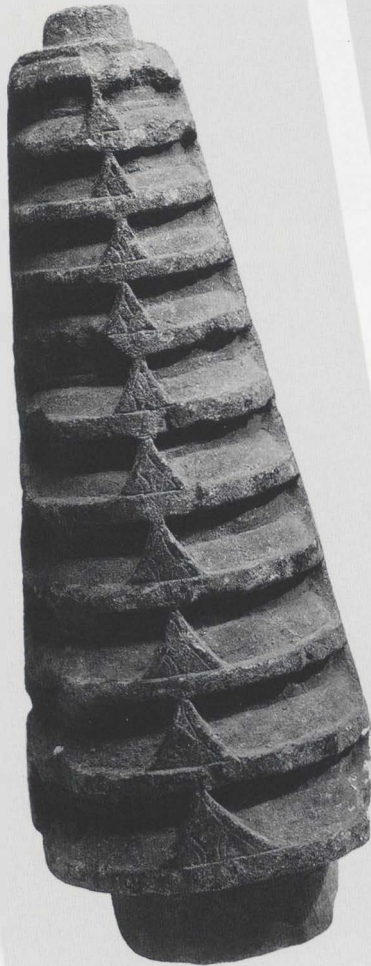
170

173

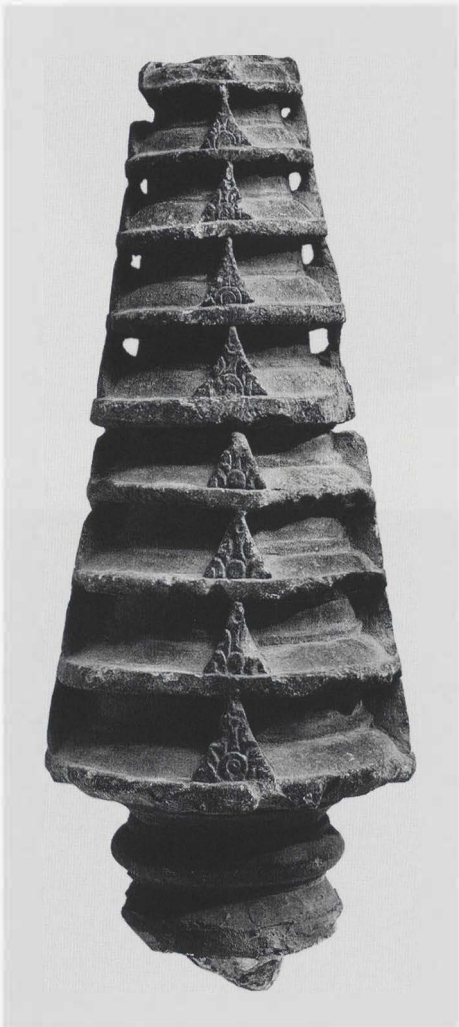
171



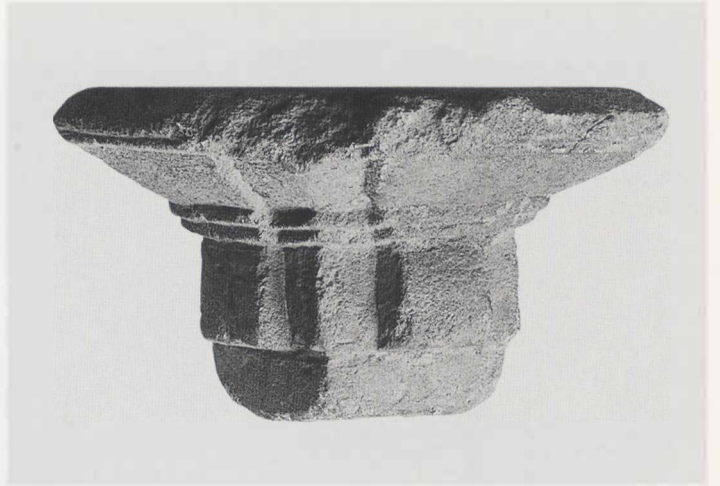
172



174



175



176

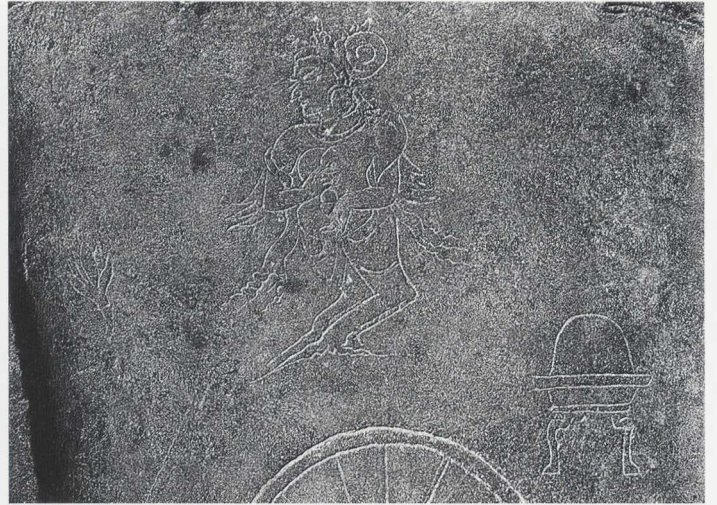


177





178a



178b



179a



179b

179c







180



182



183



184



185



186

187



188





189

190





191



193



194

195



224



196



197

198





199



200a



200b

201

202



226





203



204

205



206





207



208

209



228

210





212



211

213



214



215

230

216a



216b





218

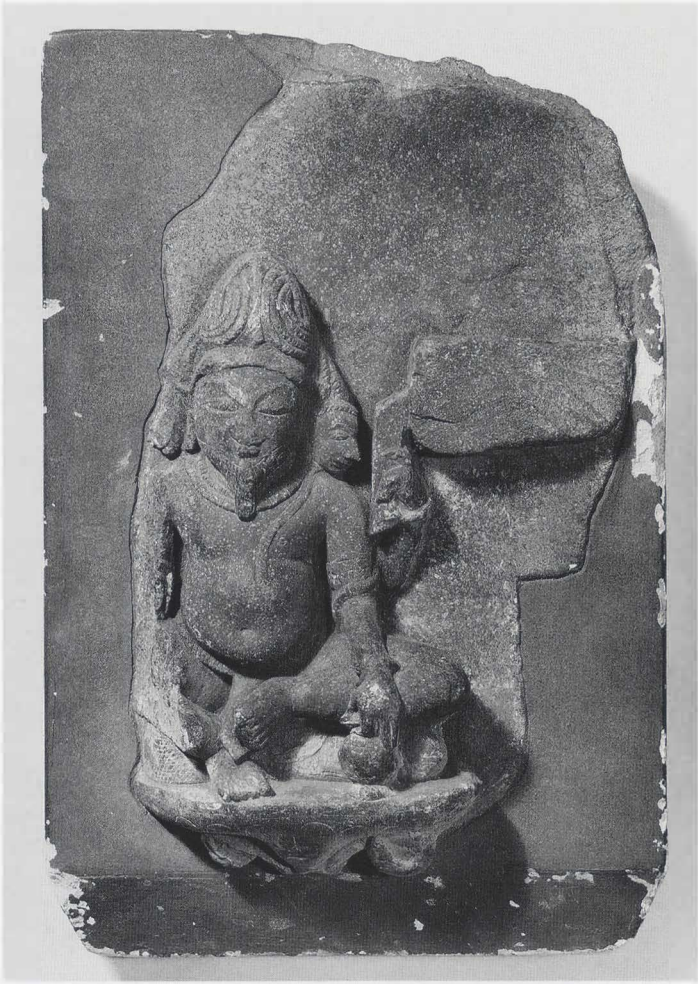
219



232

220





221



222



10781

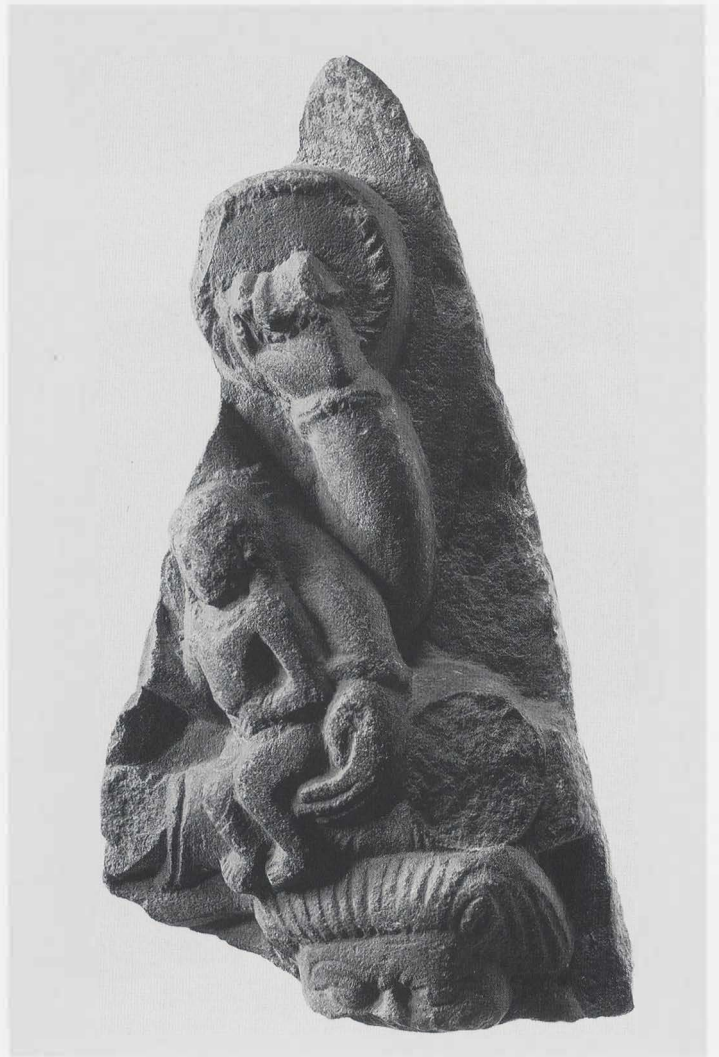
223

224



234

225



227



226



228





229



230



236

231





232



233



234

237





236



237

238





239

240

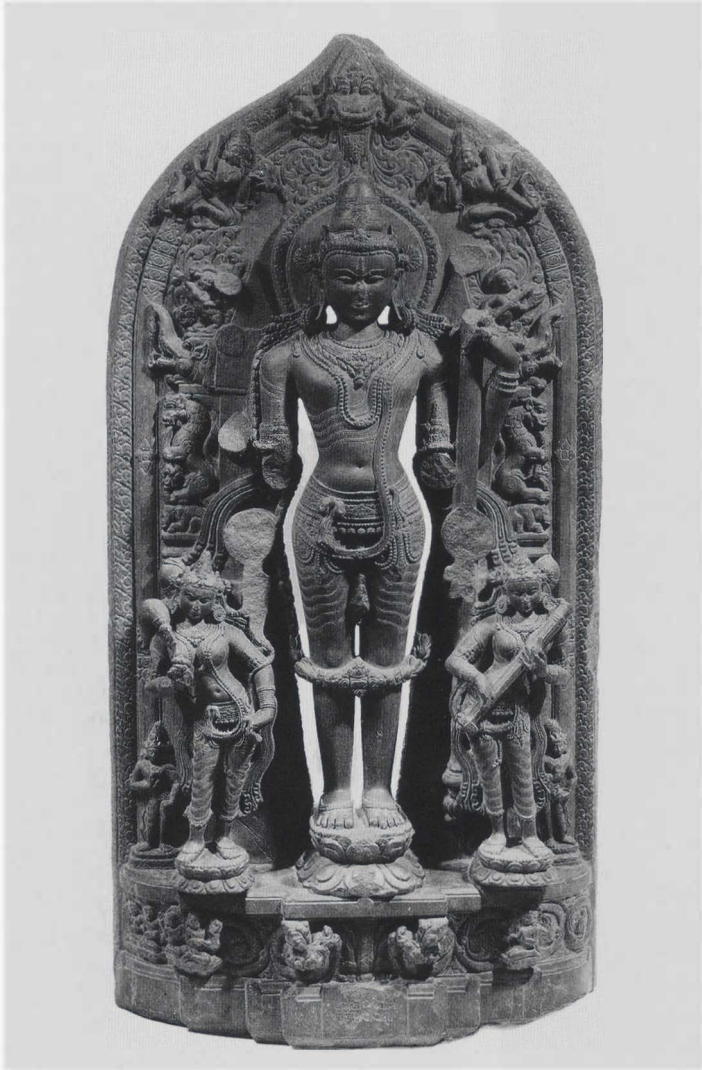


240

241

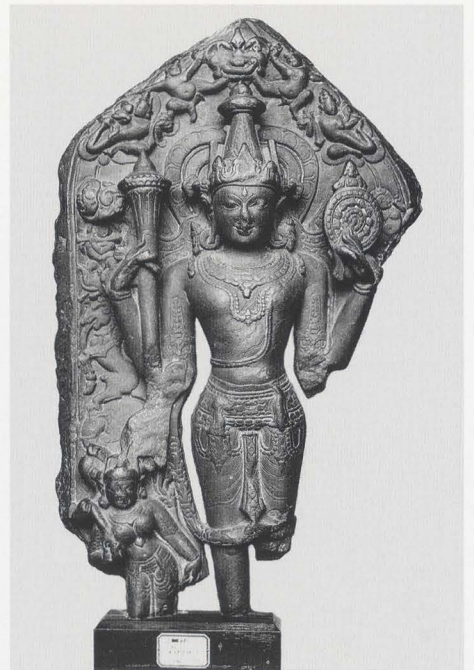


242



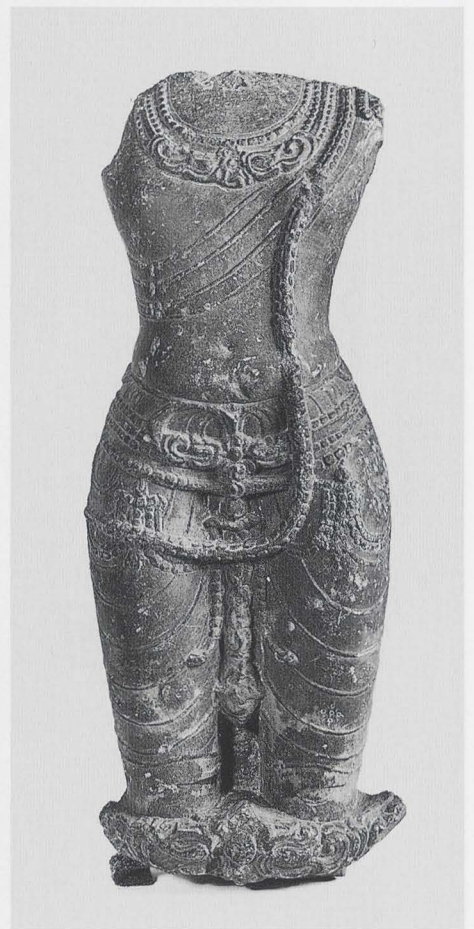
243





245

246





247

248



249





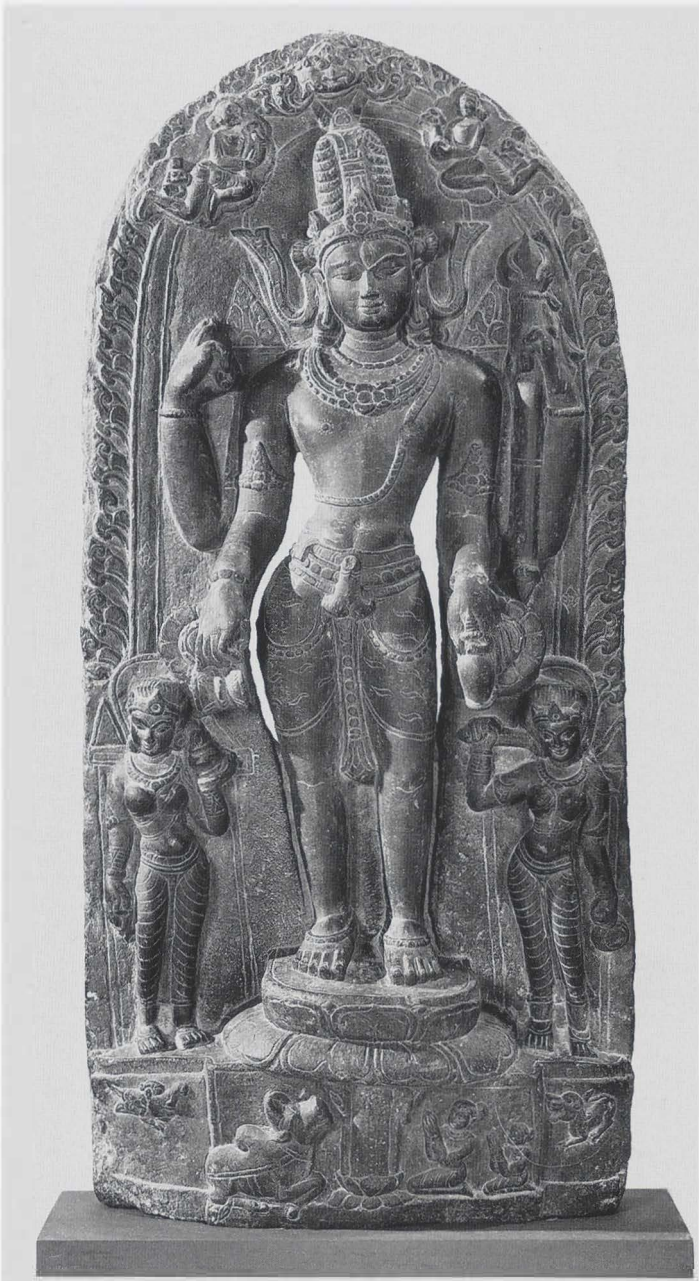
250

251



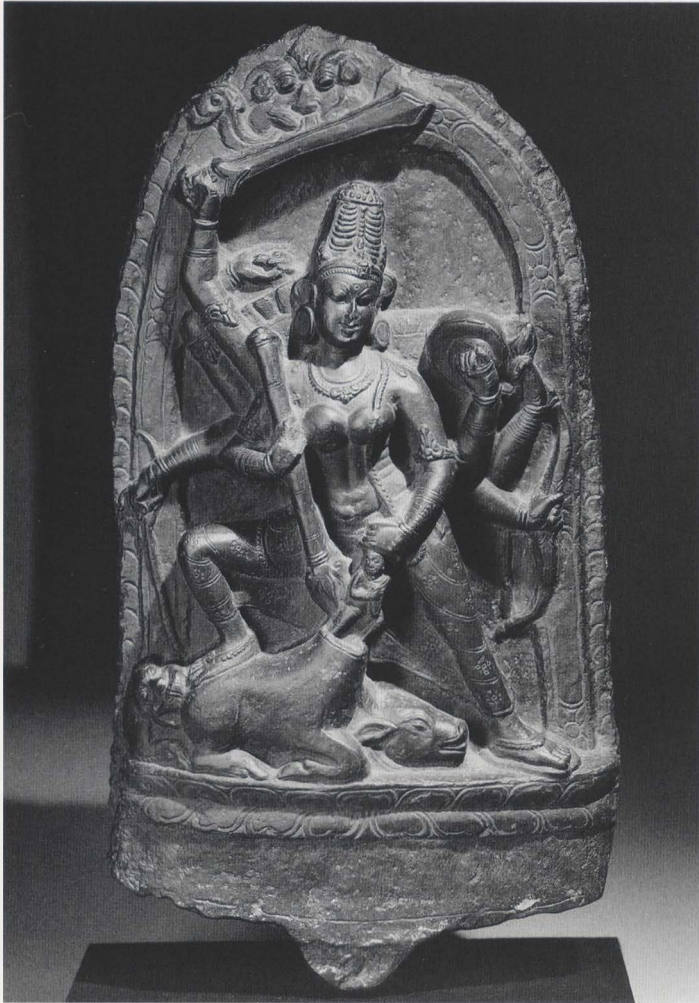


252



253



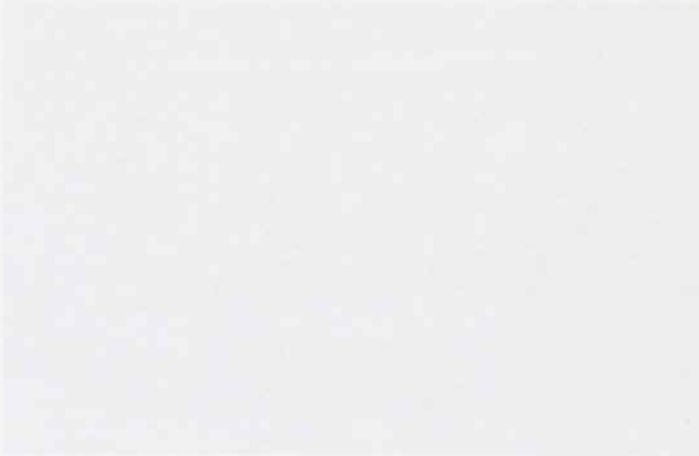


254



255

246



256



257



258



259



261

260



248



262

265 ▶



263

264





262

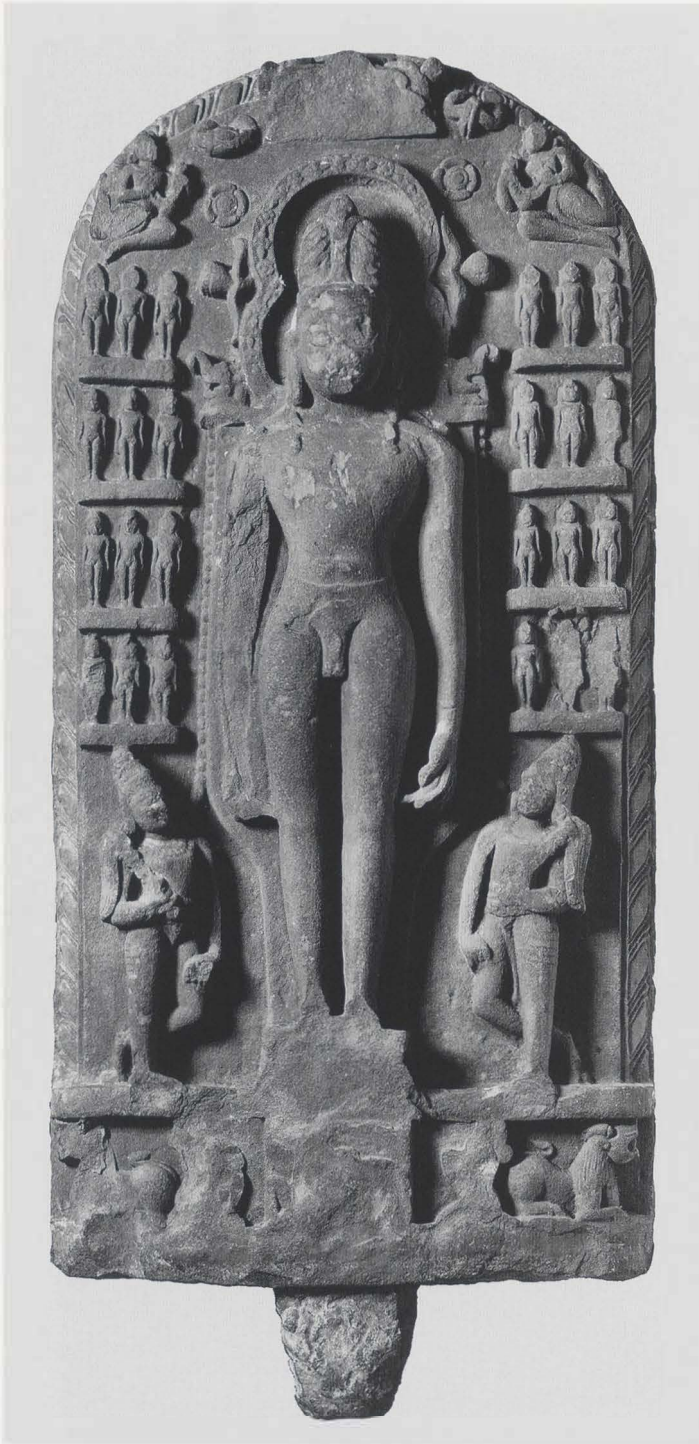
265 ▶



263

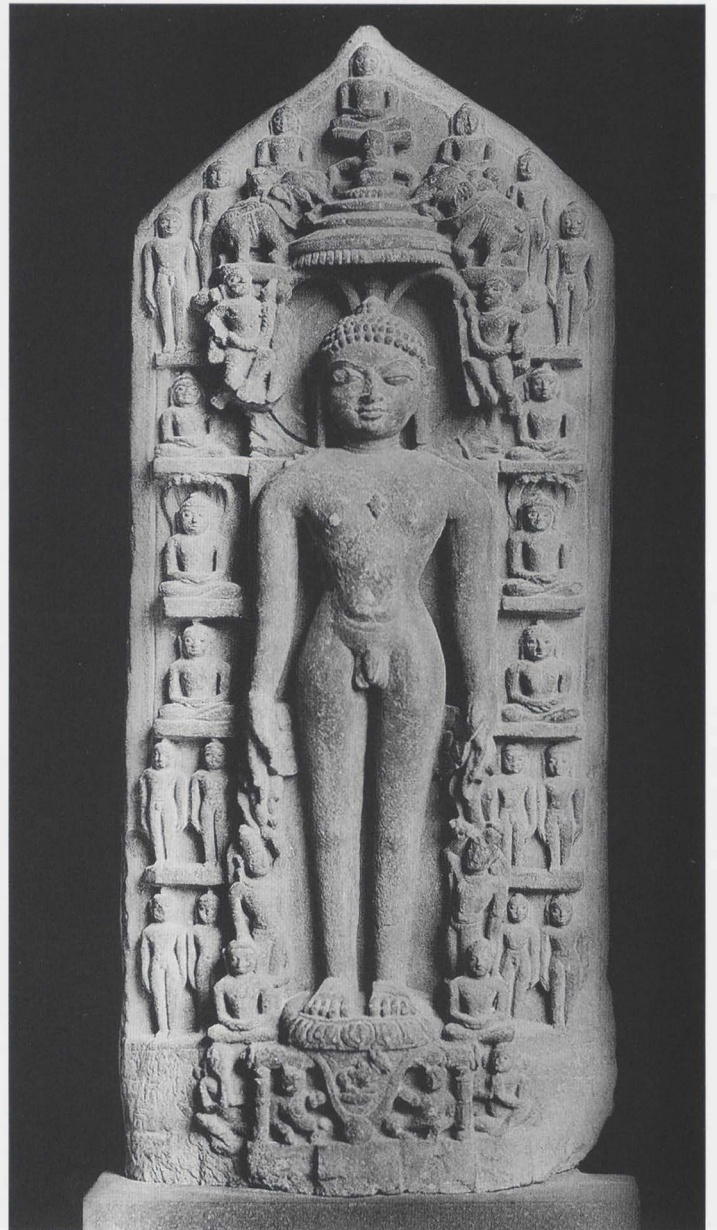
264





266

267



250

268



269





270

271

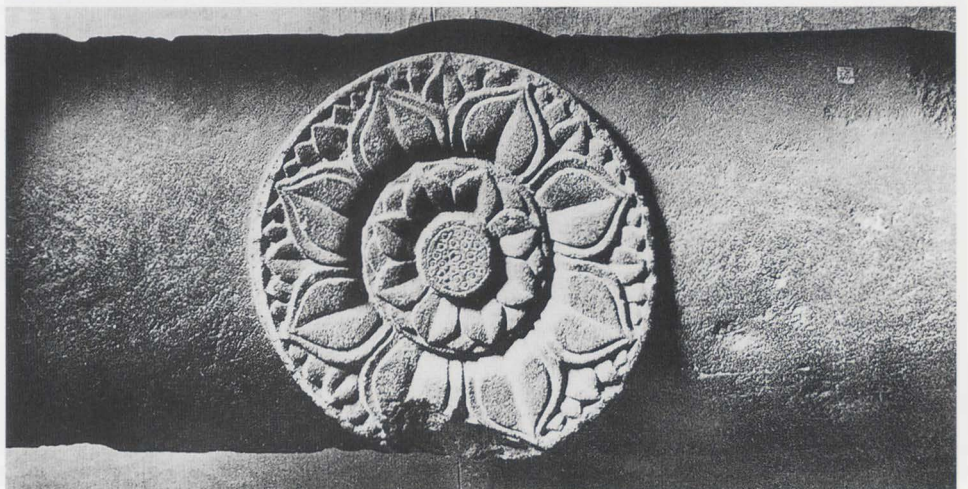


252



272

273





274a



274b



275



276a



276b

277



278





279



280a



280b



280c



281



283

282





284



288



289



285

286



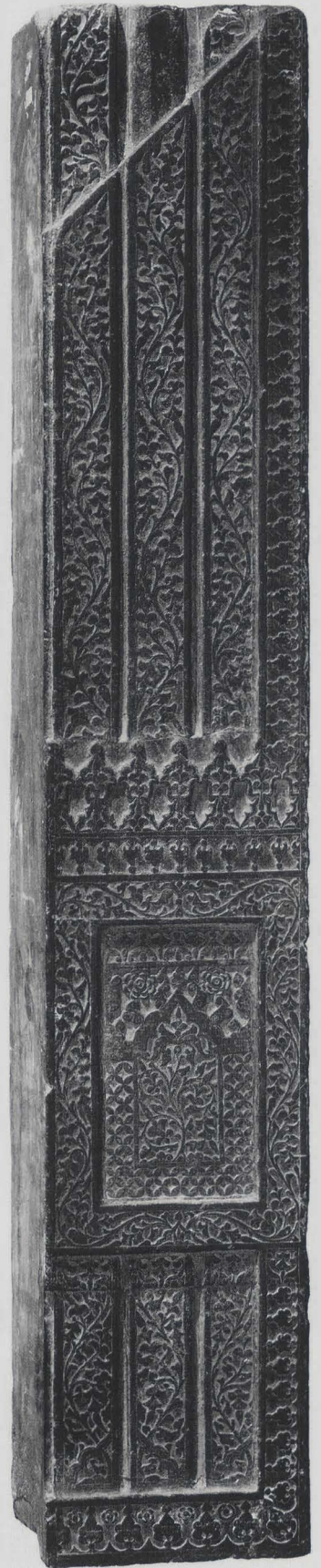
258



290

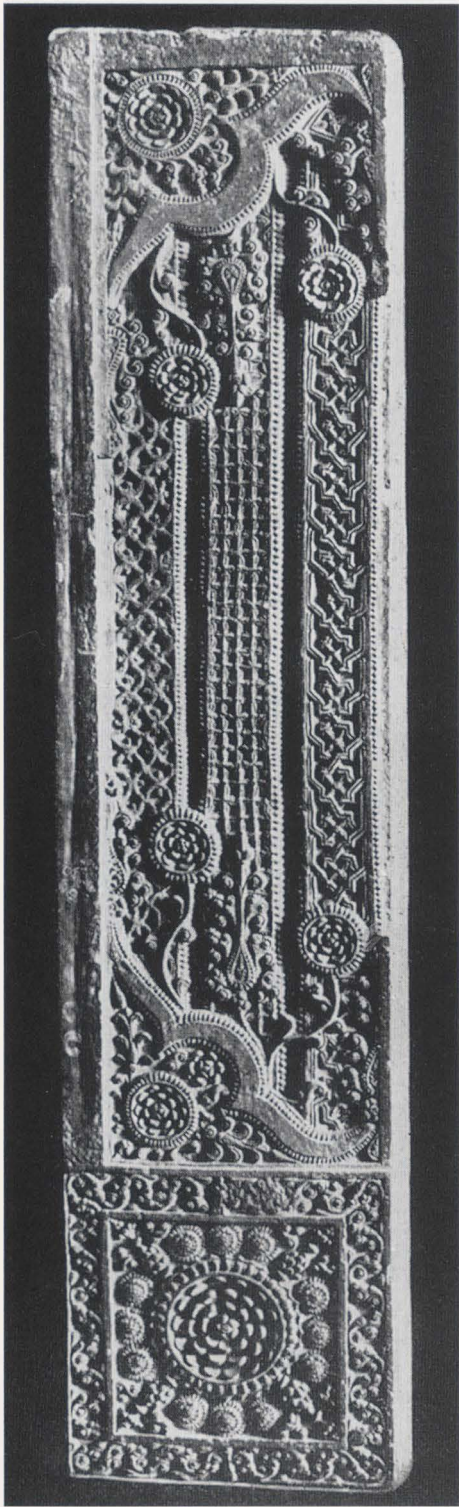


291



292





293



294



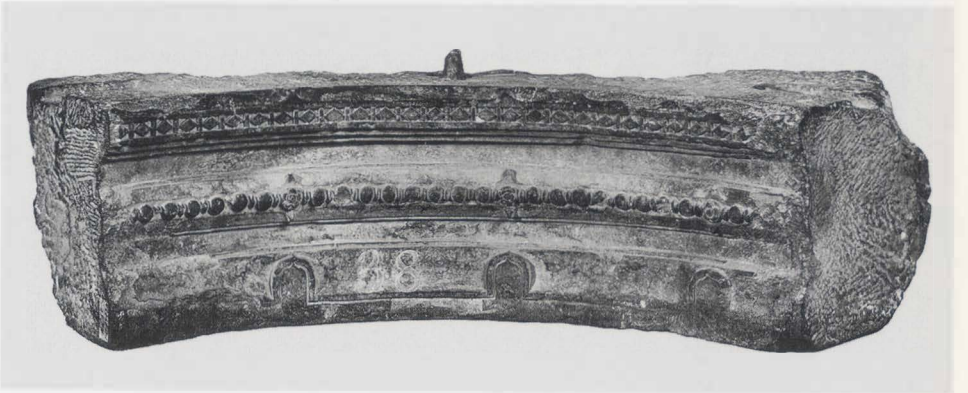
295

296



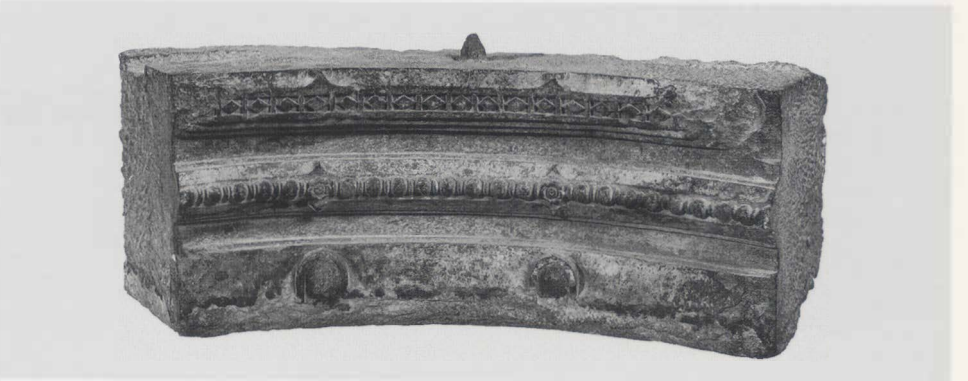


297



298 a

298 b





299

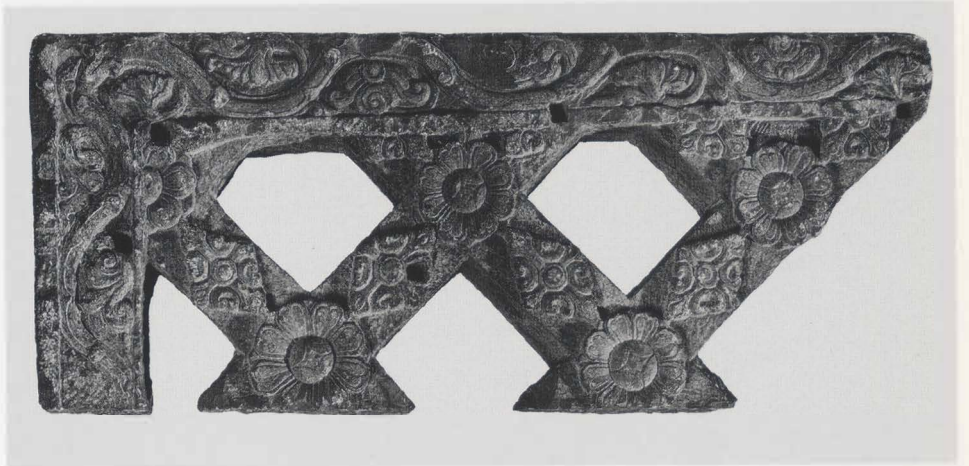
300



301



262



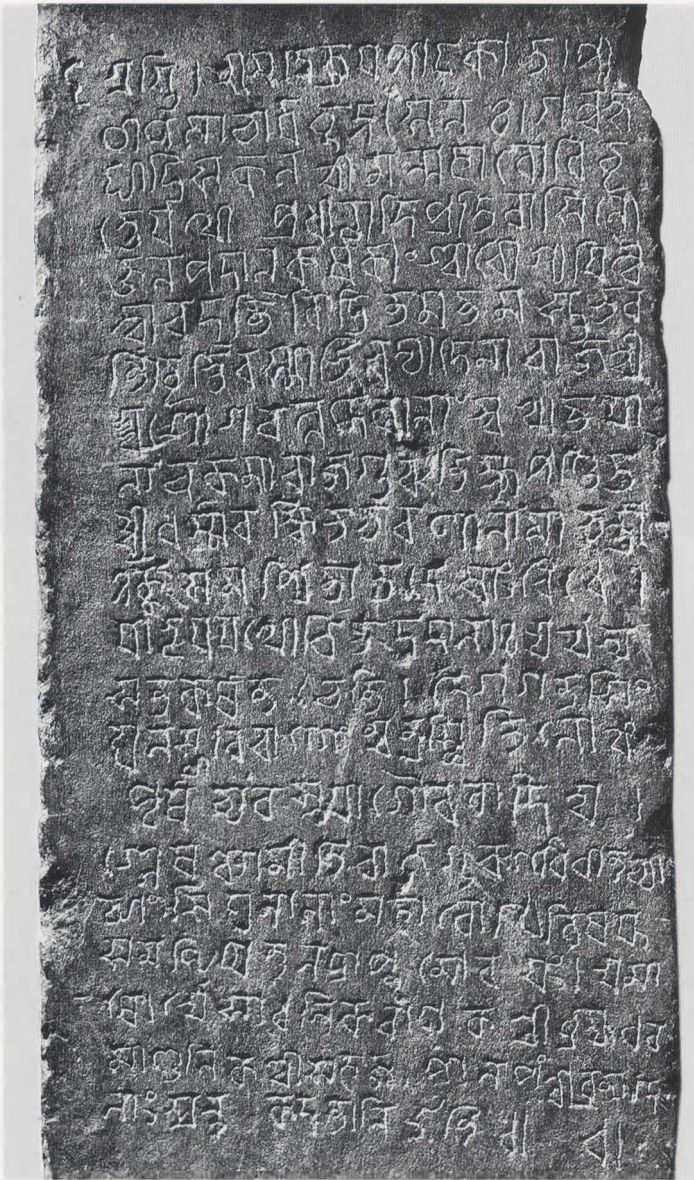
302



303

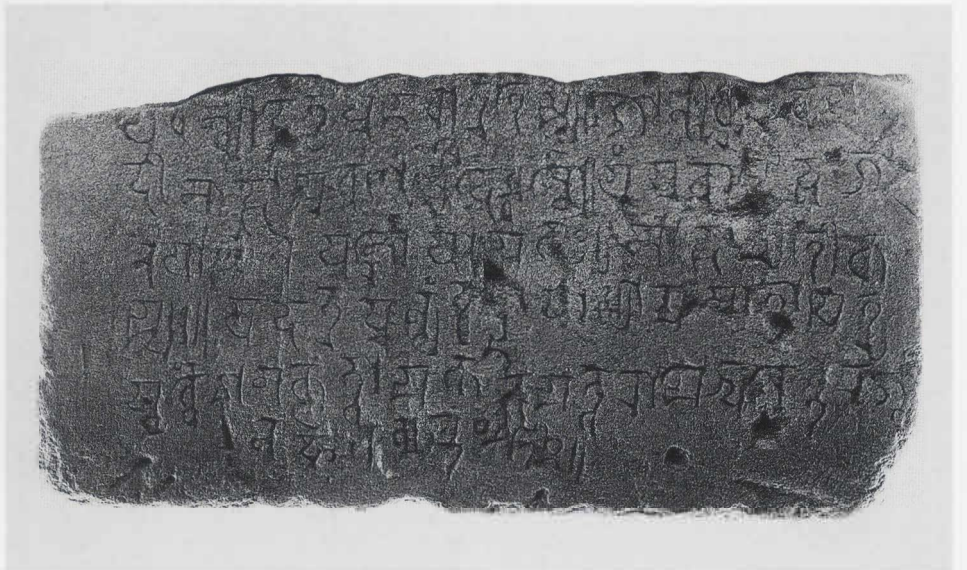
304





305

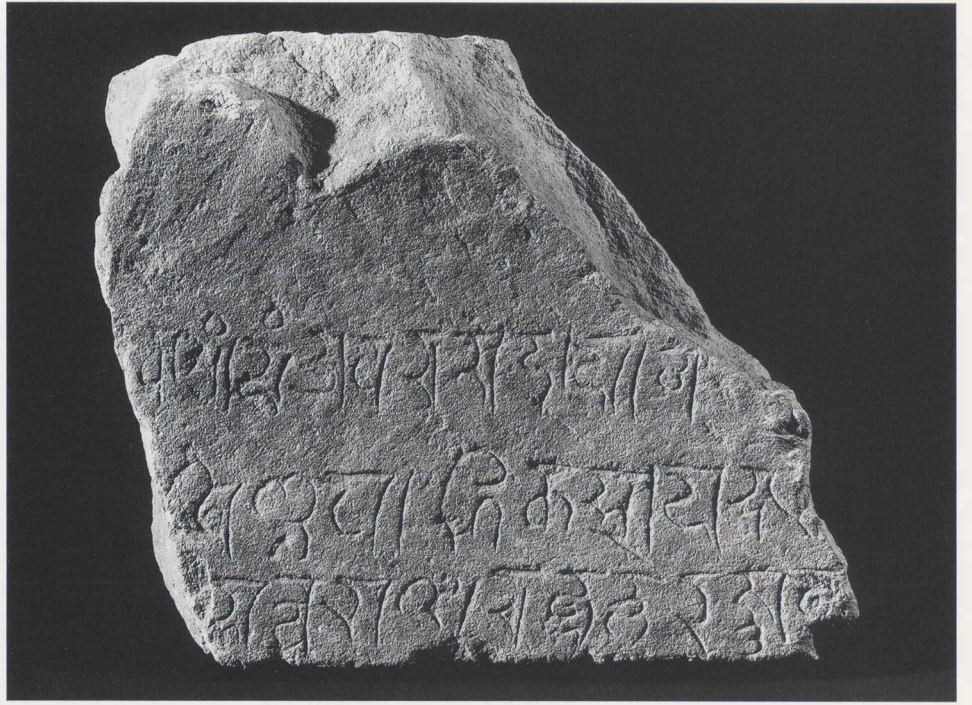
306



264

308

307





309

310 311



266

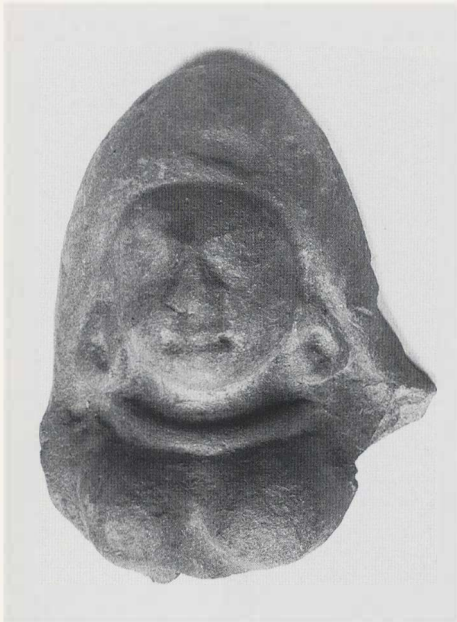


312

317







318



319



320



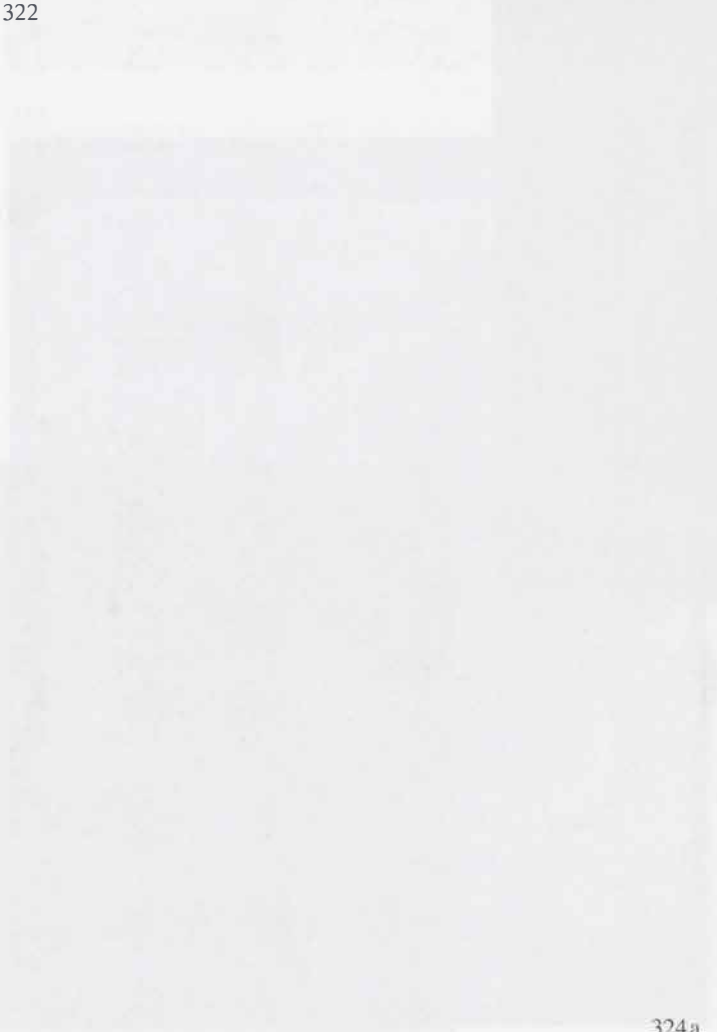
321



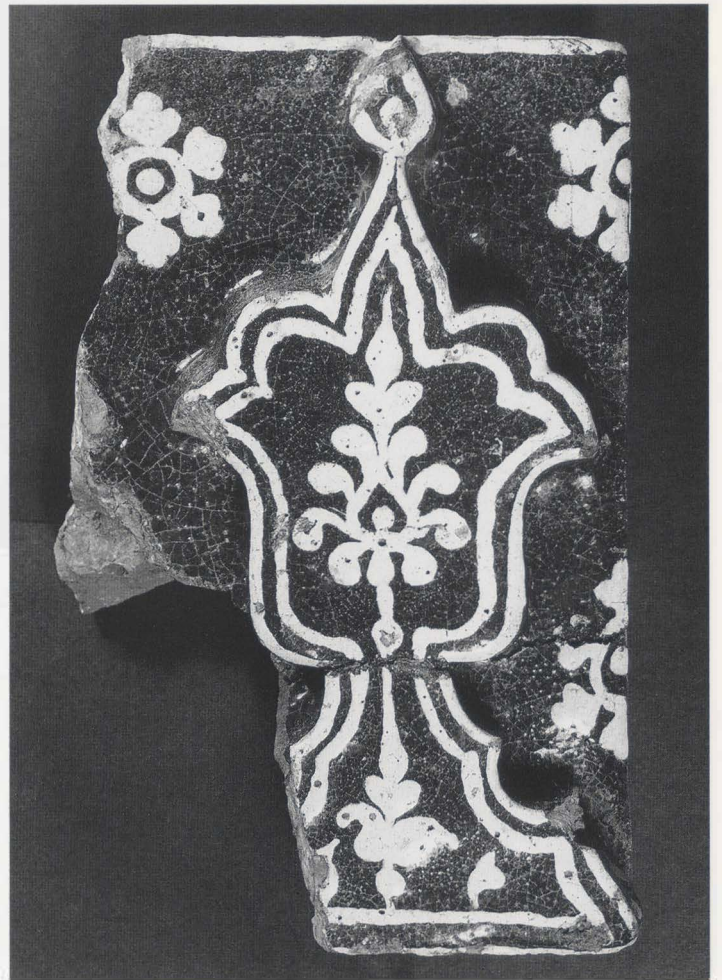
322

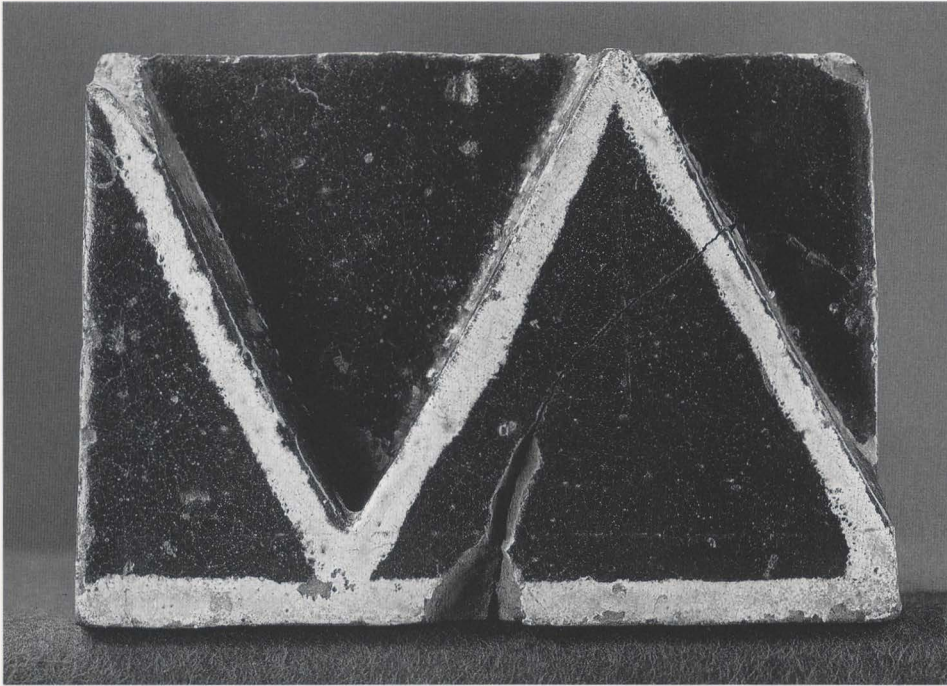


323

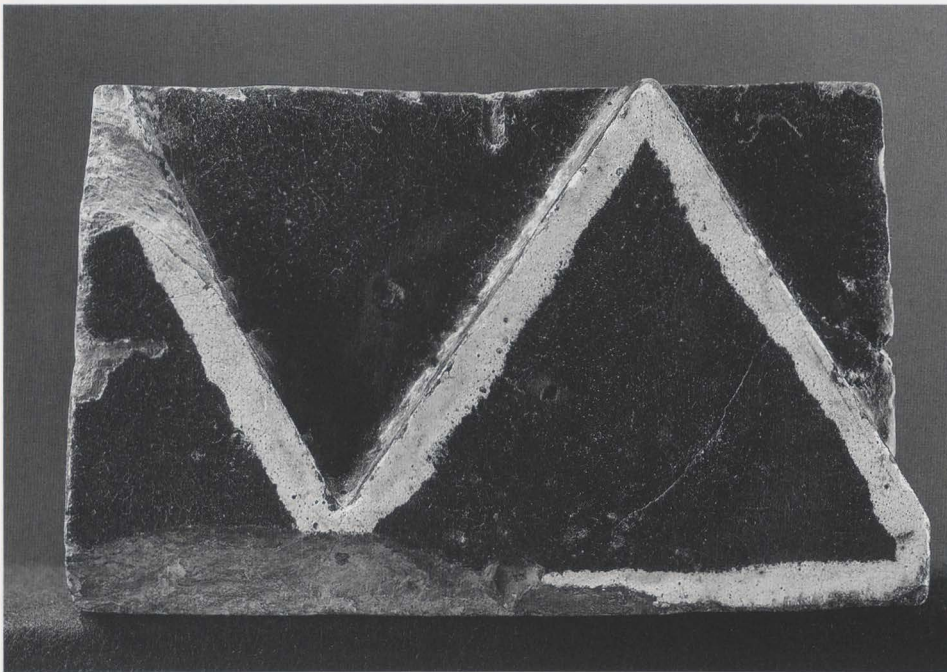


324a



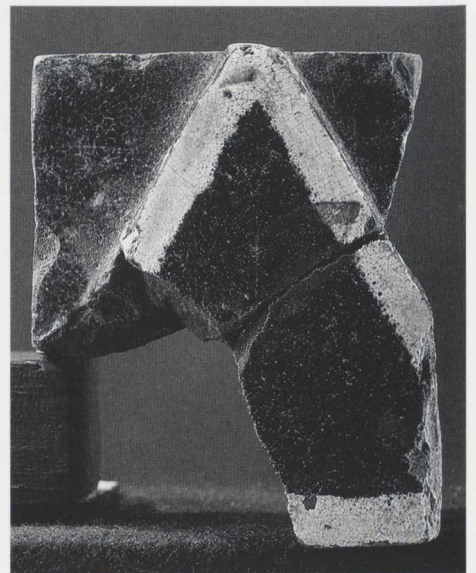


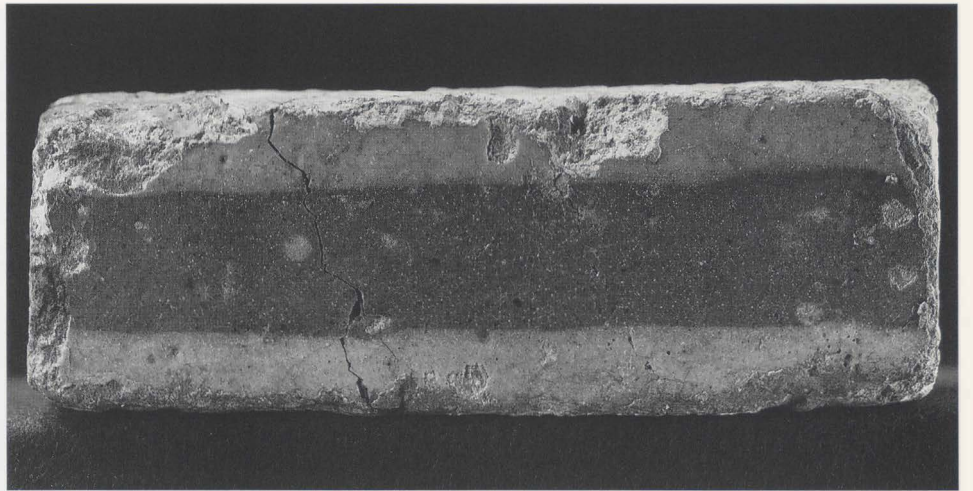
325a



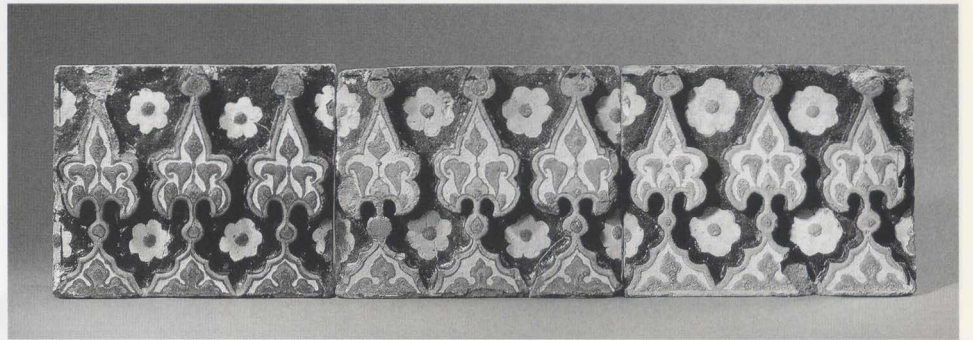
325b

325c



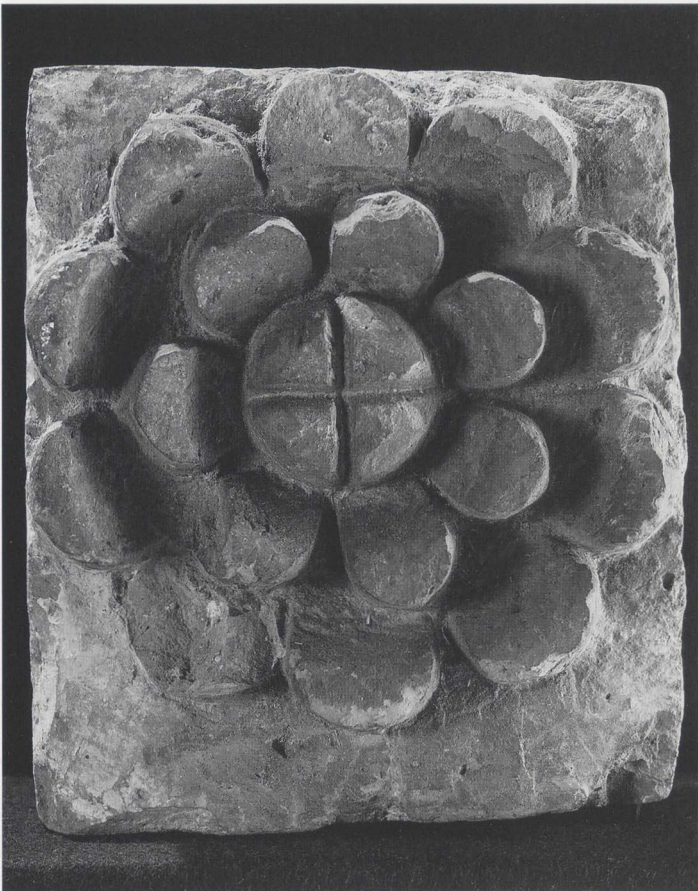


326



327

328



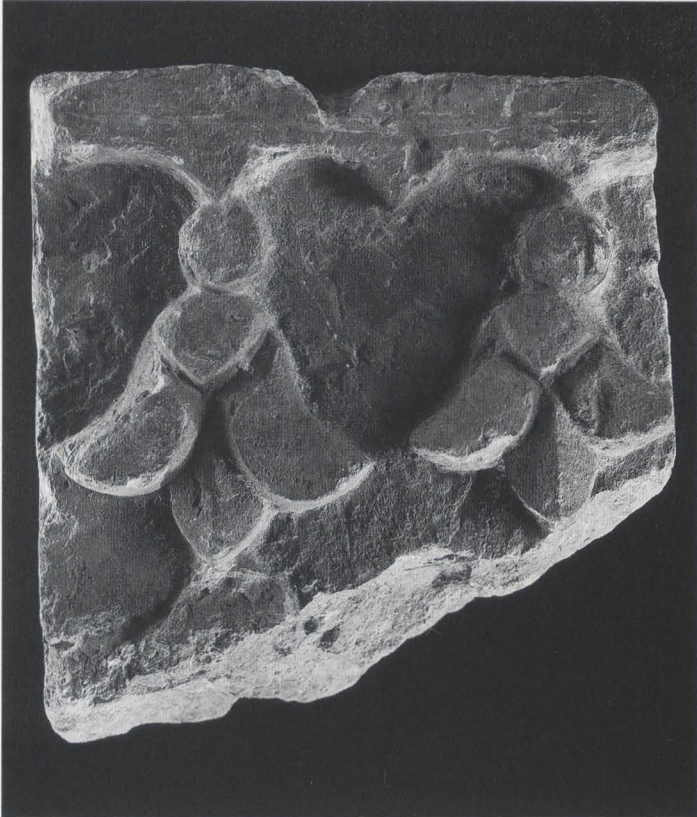
329





330

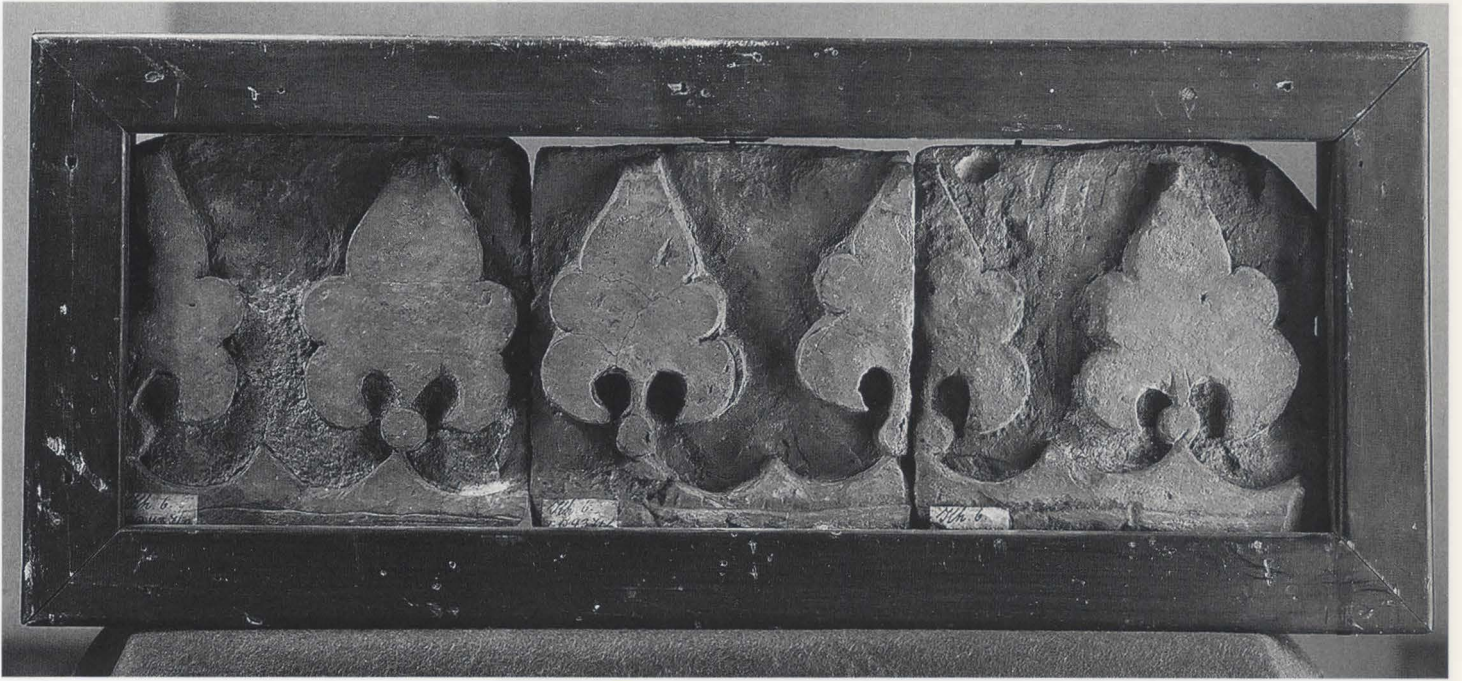
331



272

332





333

334



335





336

337



274



340

341







343



342



344



276



345



346